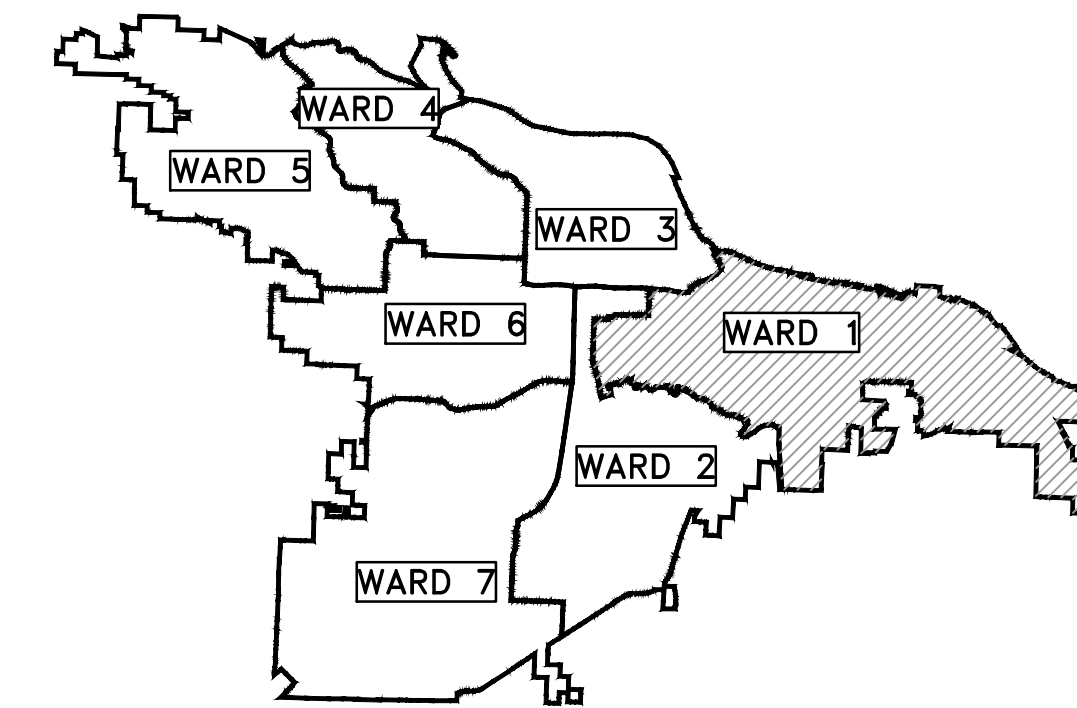


BROADWAY DRAINAGE

WEST 33RD STREET TO RR TRACK


CLR PROJECT #01-22-DR-181

REVISIONS	DATE

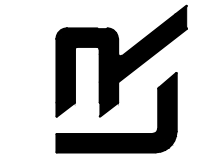


PROJECT LOCATION - WARD 1

CITY OF LITTLE ROCK, ARKANSAS
BROADWAY DRAINAGE
 COVER SHEET
 60% SUBMITTAL



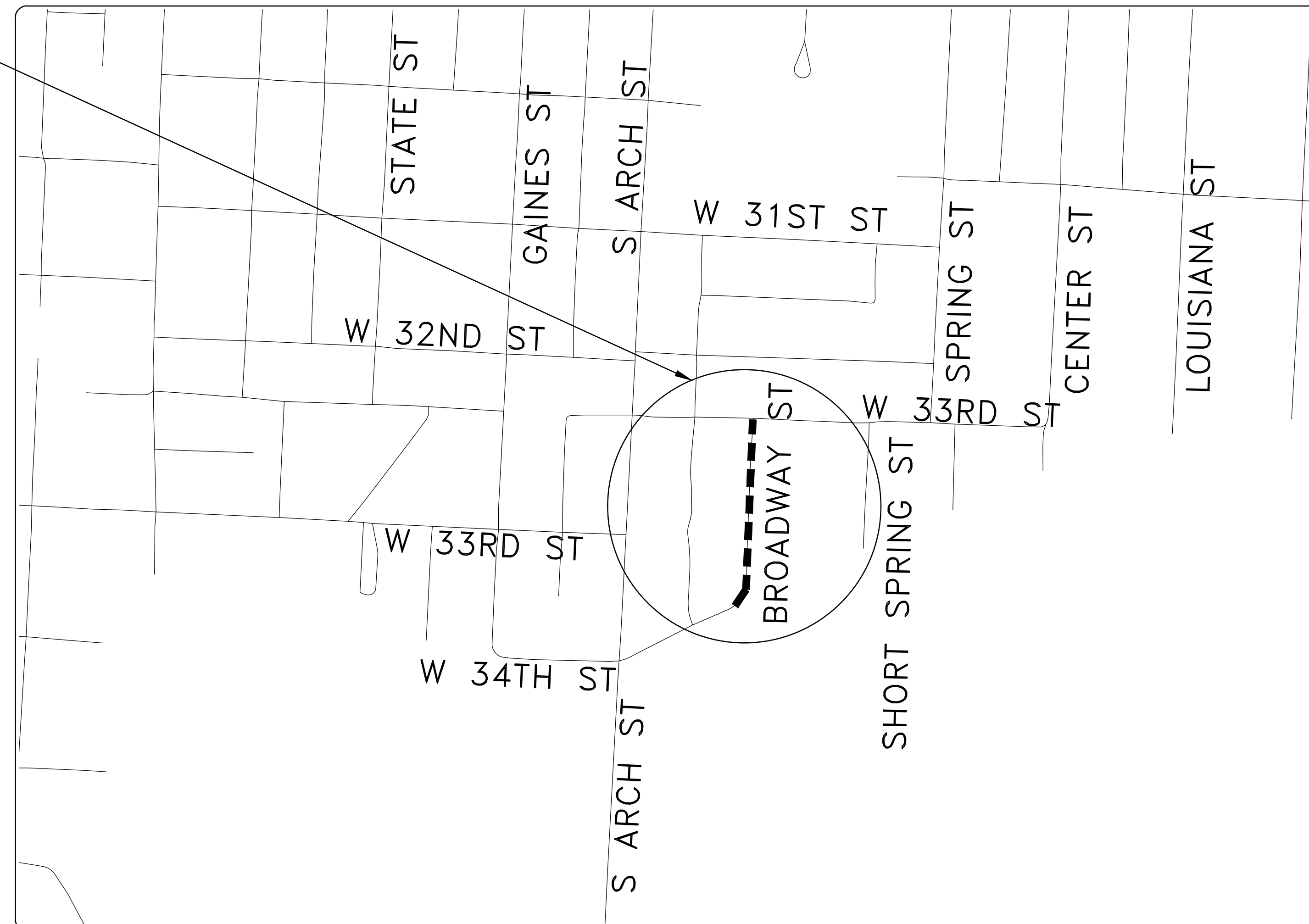
DEPARTMENT OF PUBLIC WORKS
 CIVIL ENGINEERING
 701 W. MARKHAM
 LITTLE ROCK, ARKANSAS 72201



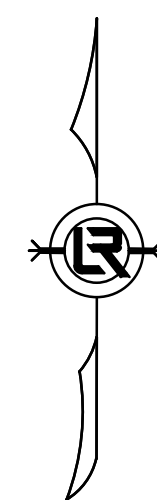
PRELIMINARY

DRAWN BY TM
DESIGNED VJW & TM
CHECKED VJW
DATE 05-21-2024
SCALE N.T.S.
PROJECT NO. 01-22-DR-181
SHEET NO. C0

PROJECT LOCATION
 LAT: 34°42'59"N
 LONG: 92°16'46"W



SHEET NO.	TITLE
C0	COVER SHEET
C1	GENERAL NOTES, LEGEND AND QUANTITY
C2	TYPICAL SECTION
C3	EXISTING CONDITIONS
C4	PLAN AND PROFILE
C5	CROSS SECTIONS
C6	SURVEY CONTROL PLAN
C7	EROSION CONTROL PLAN - PHASE 1
C8	EROSION CONTROL PLAN - PHASE 2&3
C9	MAINTENANCE OF TRAFFIC PLAN



DEPARTMENT OF PUBLIC WORKS
 CIVIL ENGINEERING
 701 WEST MARKHAM STREET
 LITTLE ROCK, ARKANSAS 72201



Know what's below.
 Call before you dig.

GNE Designing our client's success
GarNat Engineering, LLC

P.O. Box 116 (72018)
 3825 Mt Carmel Rd
 Bryant, AR 72022

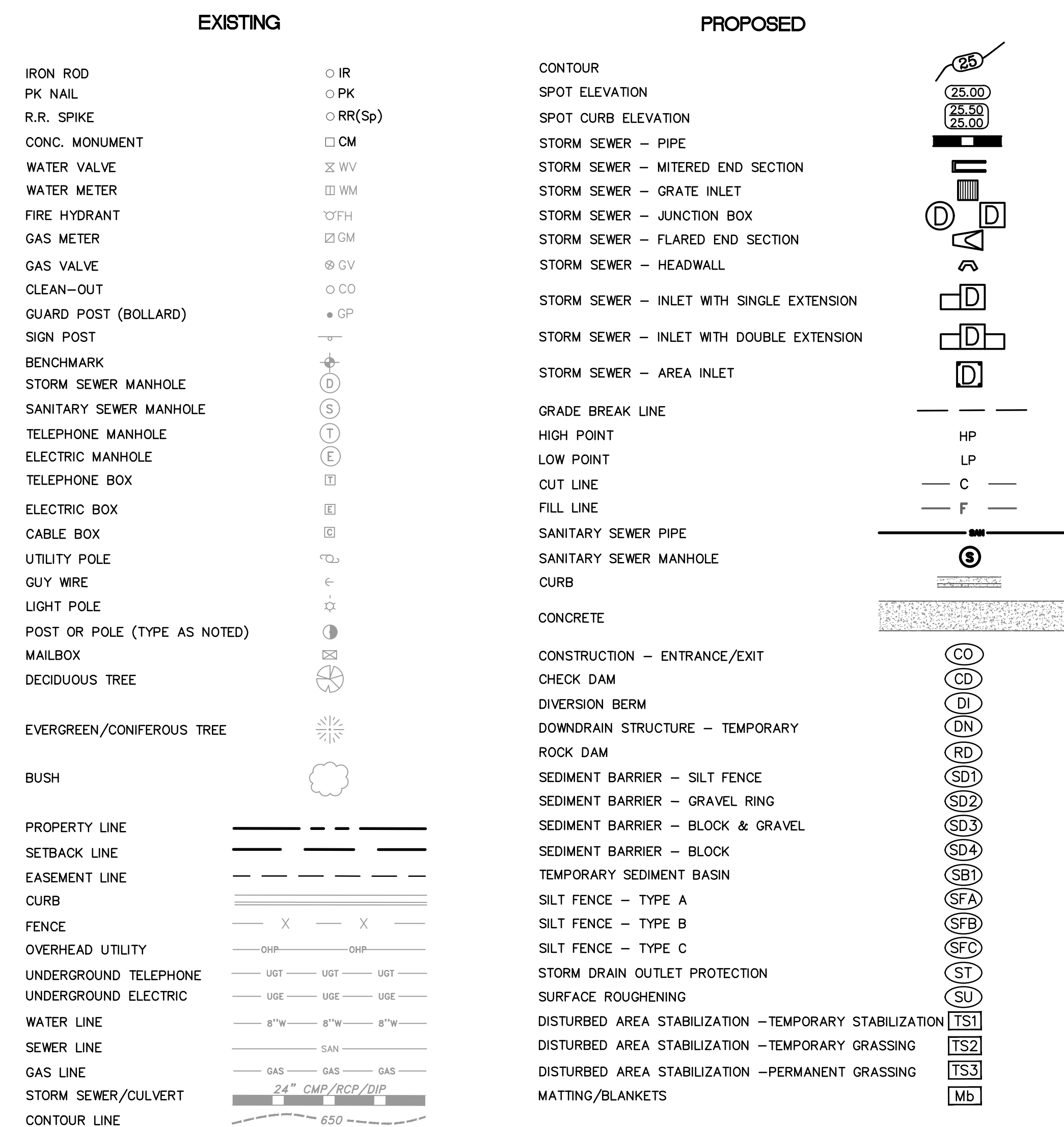
Ph (501) 408-4650
 Fx (888) 900-3068
 garnatengineering@gmail.com

REVISIONS	DATE

Broadway Drainage-60% QUANTITIES

29-May-2024

Item#	Description	Unit	Quantity
2.01	Site Preparation	LS	1
3.01	Unclassified Excavation	CY	135
3.06	Borrow Material	CY	150
3.40	Top Soil	CY	85
4.01	Aggregate Base Course	TON	140
5.01	Tack Coat	GAL	125
6.10	ACHM Surface Course	TON	195
7.06	Concrete Driveway and Apron (6" Thick)	SF	1820
8.01	Concrete Curb and Gutter (Class 3)	LF	925
9.03	Concrete Flume	SF	90
9.10	Concrete Sidewalk	SF	1775
14.01	Solid Sod, Bermuda	SY	500
16.01	Maintenance of Traffic	LS	1
18.50	Access Ramp	SF	50
18.55	Water for Dust Control	GAL	10000
19.01	Final cleanup	LS	1
23.01	B Stone	TON	300
26.10	Trench excavation & safety	LS	1
24.11	Silt Fence Type A (SFA)	LF	550
27.10	Cold Milling Asphalt Pavement	SY	40
726.01	Standard Sign	SF	9.5
729.01	Channel Post Sign Support (Type)	EA	1
733.12 & SP	18" Street Name Sign	EA	1



CITY OF LITTLE ROCK, ARKANSAS
BROADWAY DRAINAGE
 GENERAL NOTES, LEGEND AND QUANTITY
 60% SUBMITTAL

DEPARTMENT OF PUBLIC WORKS
 CIVIL ENGINEERING
 500 W. MARKHAM
 LITTLE ROCK, ARKANSAS 72201

PRELIMINARY

DRAWN BY	TM
DESIGNED	VJW & TM
CHECKED	VJW
DATE	05-24-2024
SCALE	1"=20' (22X34)
PROJECT NO.	01-22-DR-181
SHEET NO.	C1

REVISIONS	DATE

CITY OF LITTLE ROCK, ARKANSAS
BROADWAY DRAINAGE

TYPICAL SECTION
60% SUBMITTAL

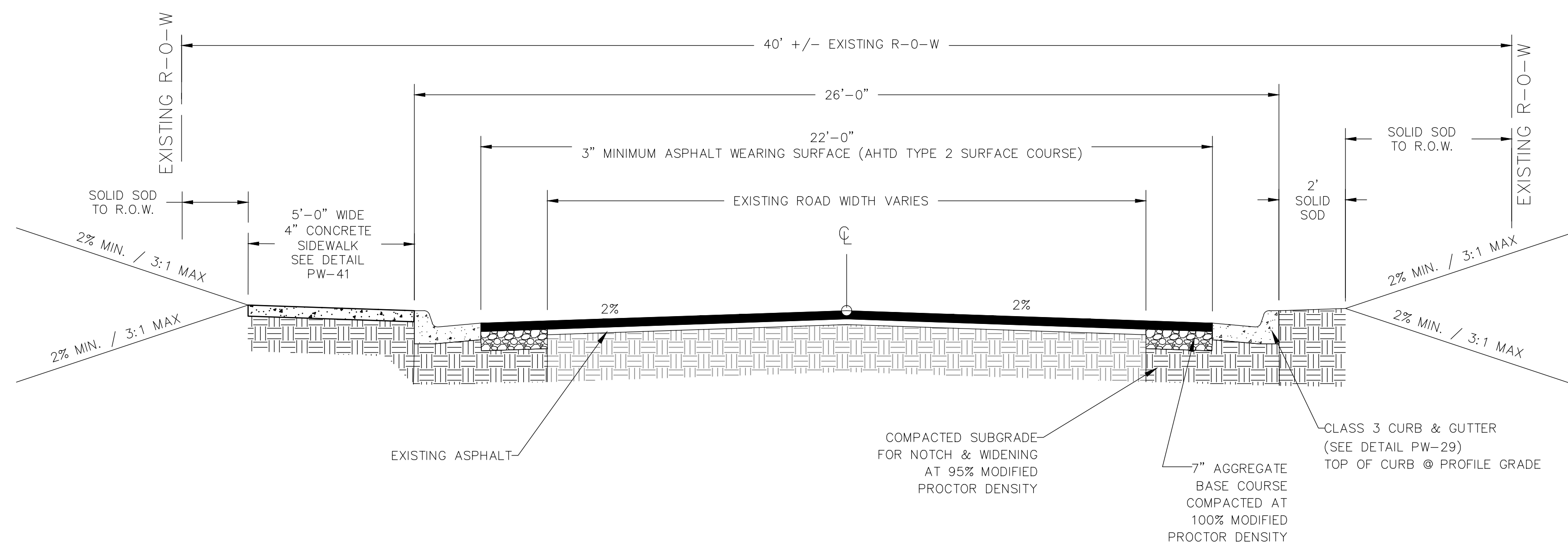
DEPARTMENT OF PUBLIC WORKS
CIVIL ENGINEERING
701 W. MARKHAM
LITTLE ROCK, ARKANSAS 72201



PRELIMINARY

DRAWN BY
TM
DESIGNED
VJW & TM
CHECKED
VJW
DATE
05-21-2024
SCALE
N.T.S.
PROJECT NO.
01-22-DR-181
SHEET NO.

C2



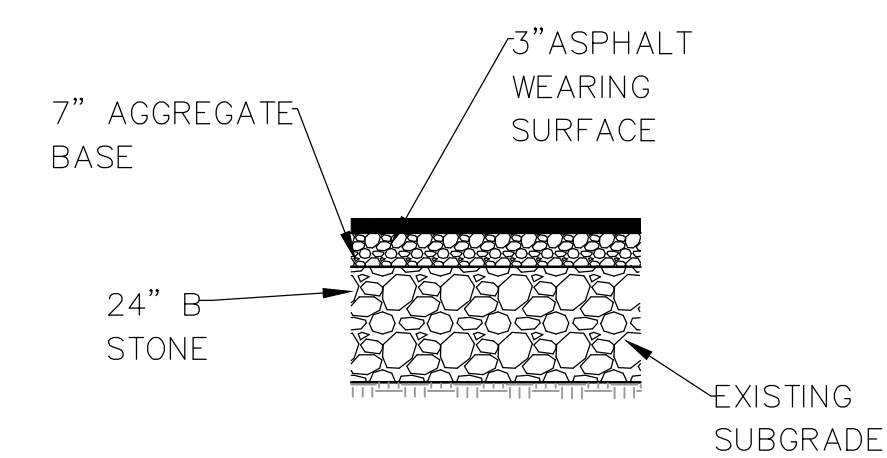
TYPICAL STREET SECTION BROADWAY STREET

SCALE: 1/8" = 1'-0"

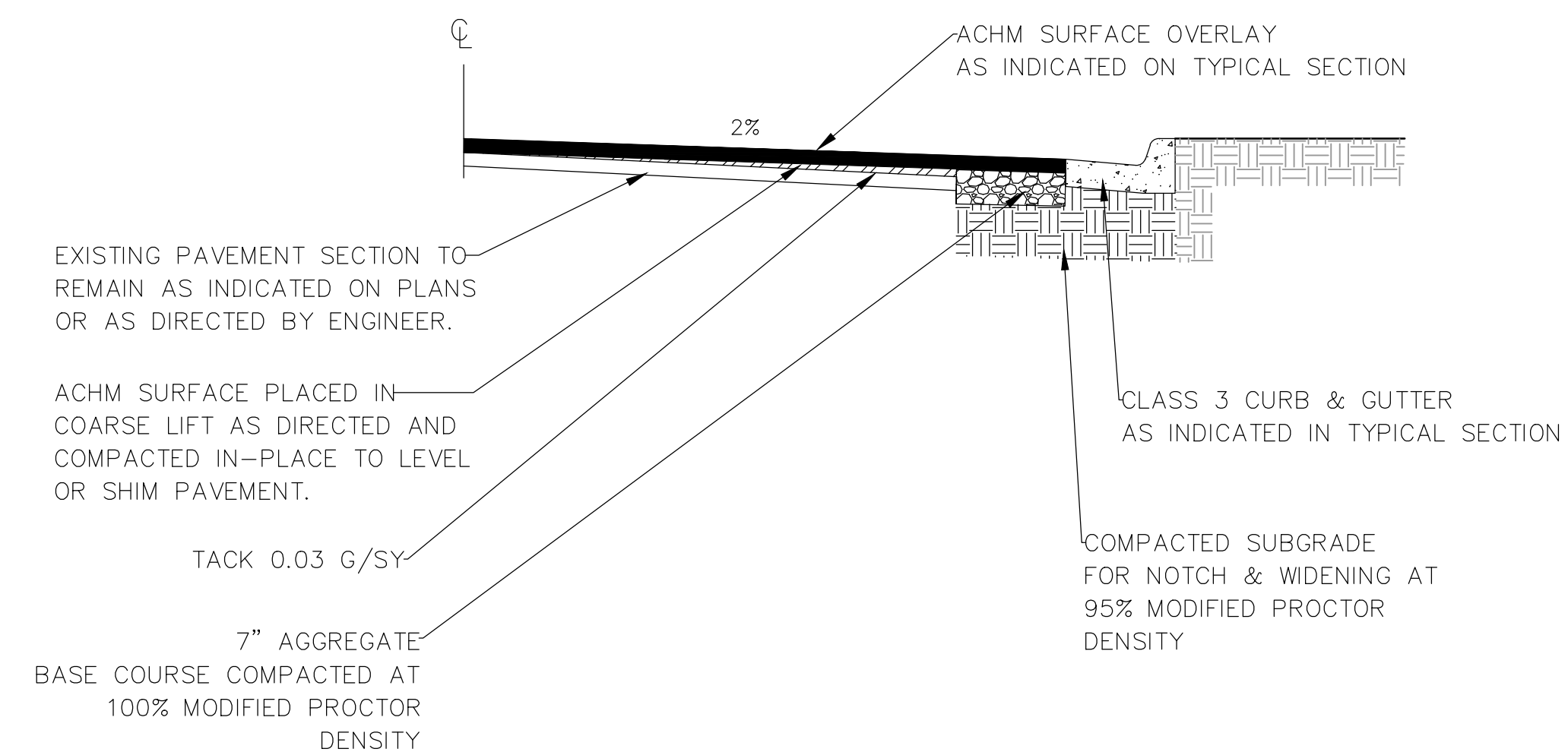
STA 0+64 TO STA 5+18

GENERAL STREET CONSTRUCTION NOTES:

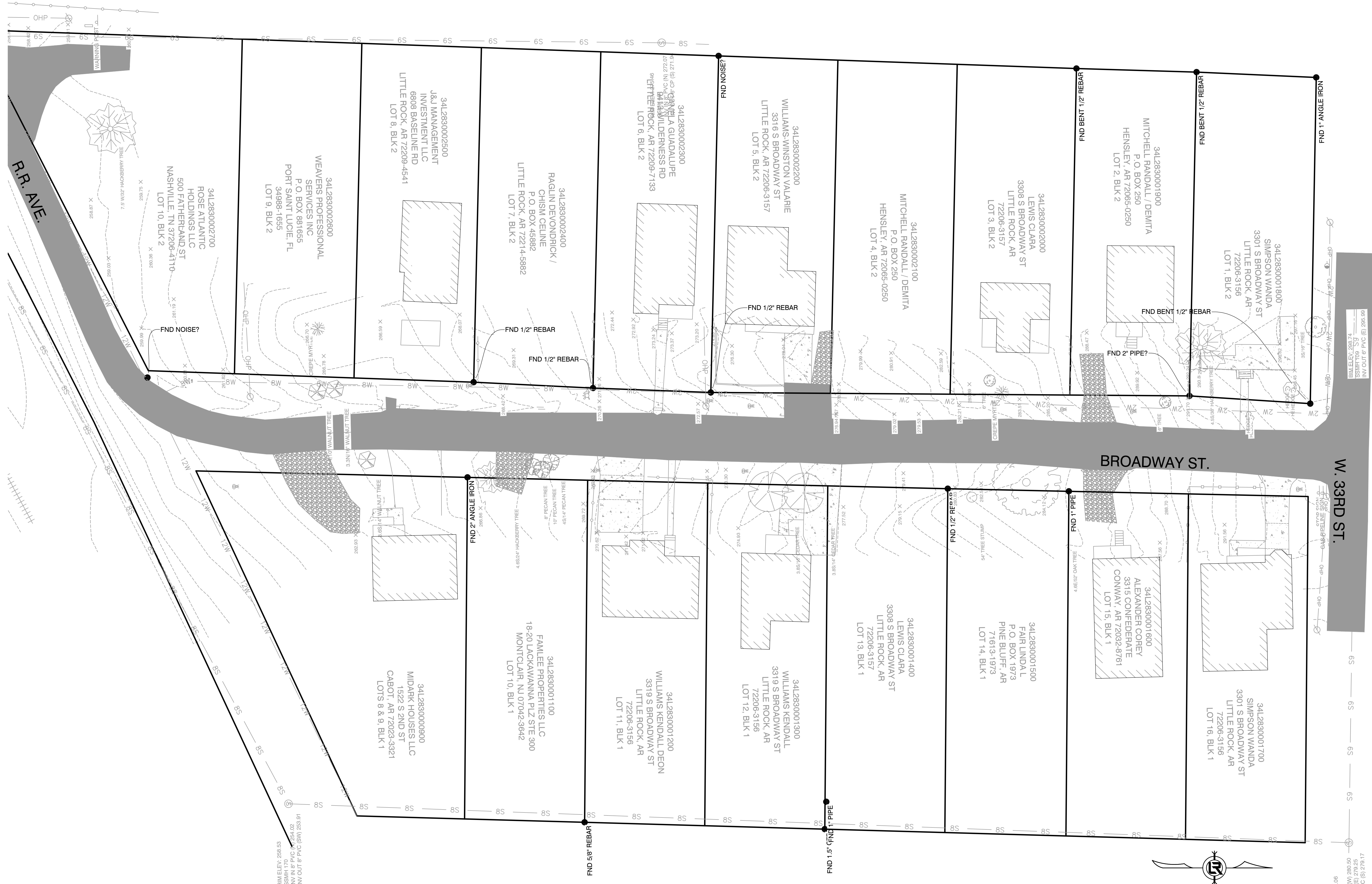
1. WORK ASSOCIATED WITH THIS DETAIL COMPLY WITH LITTLE ROCK PW-22 DETAIL.
2. IF OR WHERE DIRECTED, SAWCUT, UNDERCUT, EXCAVATE, AND RECONSTRUCT SUBGRADE WITH B STONE PER DETAIL A AS DIRECTED BY ENGINEER TO REPAIR SUBGRADE FAILURES.
3. IF OR WHERE DIRECTED BY ENGINEER, CONTRACTOR SHALL SHIM ANY LOWER AREAS TO CORRECT THE CROWN SLOPE IN EXISTING ROADWAY WITH ACHM SURFACE MATERIAL PRIOR TO RESURFACING PER ACHM SURFACE-LEVELLING DETAIL.



DETAIL A



ACHM SURFACE - LEVELING DETAIL



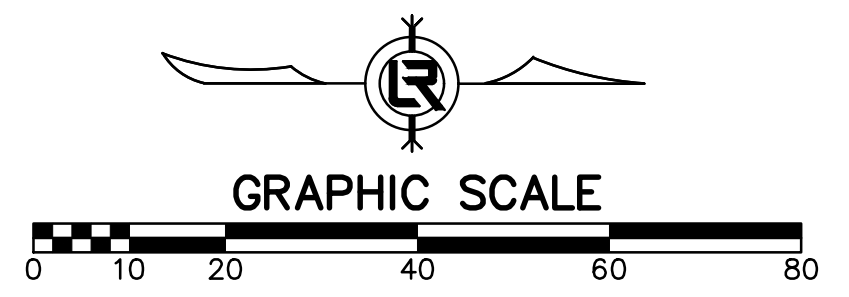
REVISIONS	DATE

CITY OF LITTLE ROCK, ARKANSAS
BROADWAY DRAINAGE
 EXISTING CONDITIONS
 60% SUBMITTAL

DEPARTMENT OF PUBLIC WORKS
CIVIL ENGINEERING
 101 W. W. MARKHAM
 LITTLE ROCK, ARKANSAS 72201

PRELIMINARY

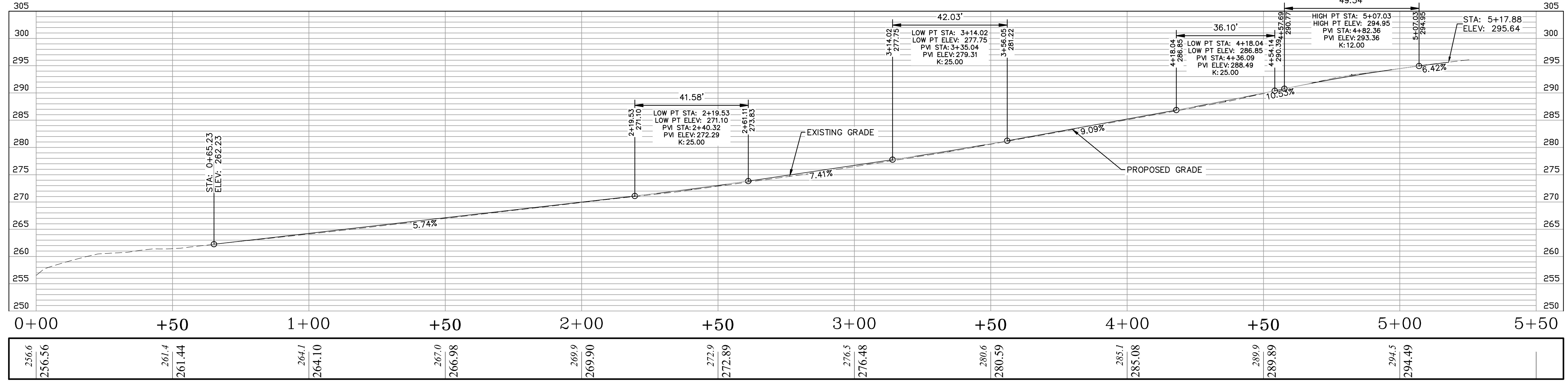
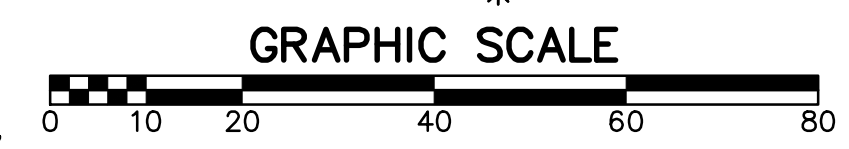
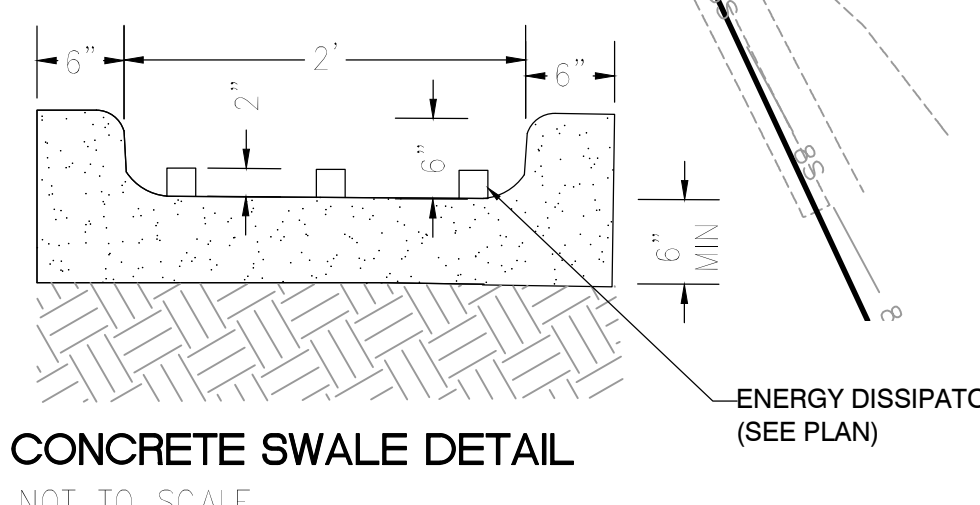
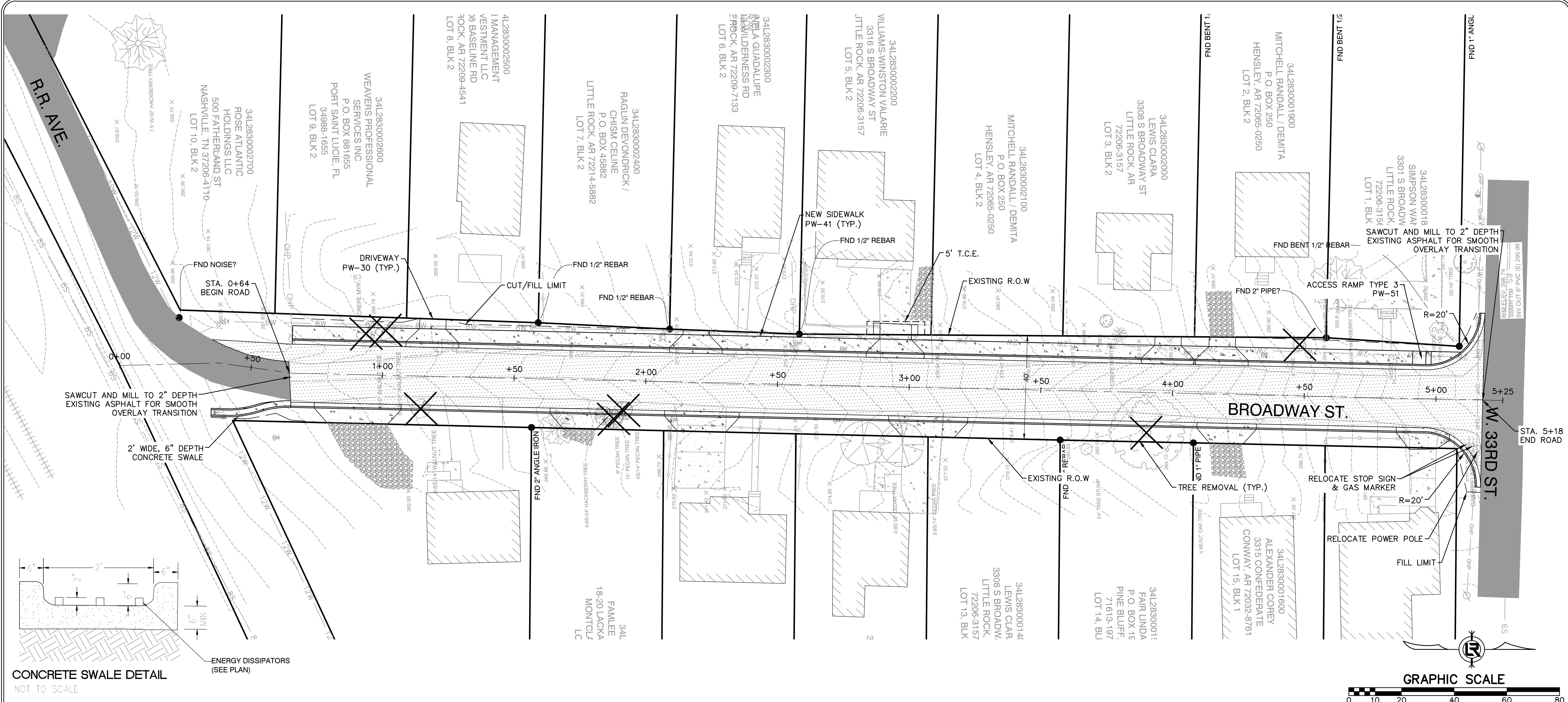
DRAWN BY
 TM
DESIGNED
 VJW & TM
CHECKED
 VJW
DATE
 05-21-2024
SCALE
 1"=20' (22X34)
PROJECT NO.
 01-22-DR-181
SHEET NO.
 C3



RIM ELEV. 269.74
 1"=20'
 INV. OUT OF P.V.C (S) 205.99

RIM ELEV. 269.74
 1"=20'
 INV. OUT OF P.V.C (S) 205.99

RIM ELEV. 269.53
 1"=20'
 INV. OUT OF P.V.C (S) 259.91



BROADWAY STREET - RR TO 33RD

REVISIONS	DATE

CITY OF LITTLE ROCK, ARKANSAS
BROADWAY DRAINAGE
 PLAN AND PROFILE
 60% SUBMITTAL

DEPARTMENT OF PUBLIC WORKS
 CIVIL ENGINEERING
 701 W. MARKHAM
 LITTLE ROCK, ARKANSAS 72201

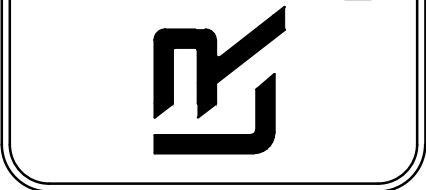
PRELIMINARY

DRAWN BY
 TM
 DESIGNED
 VJW & TM
 CHECKED
 VJW
 DATE
 05-21-2024
 SCALE
 1"=20' (22X34)
 PROJECT NO.
 01-22-DR-181
 SHEET NO.
 C4

REVISIONS	DATE

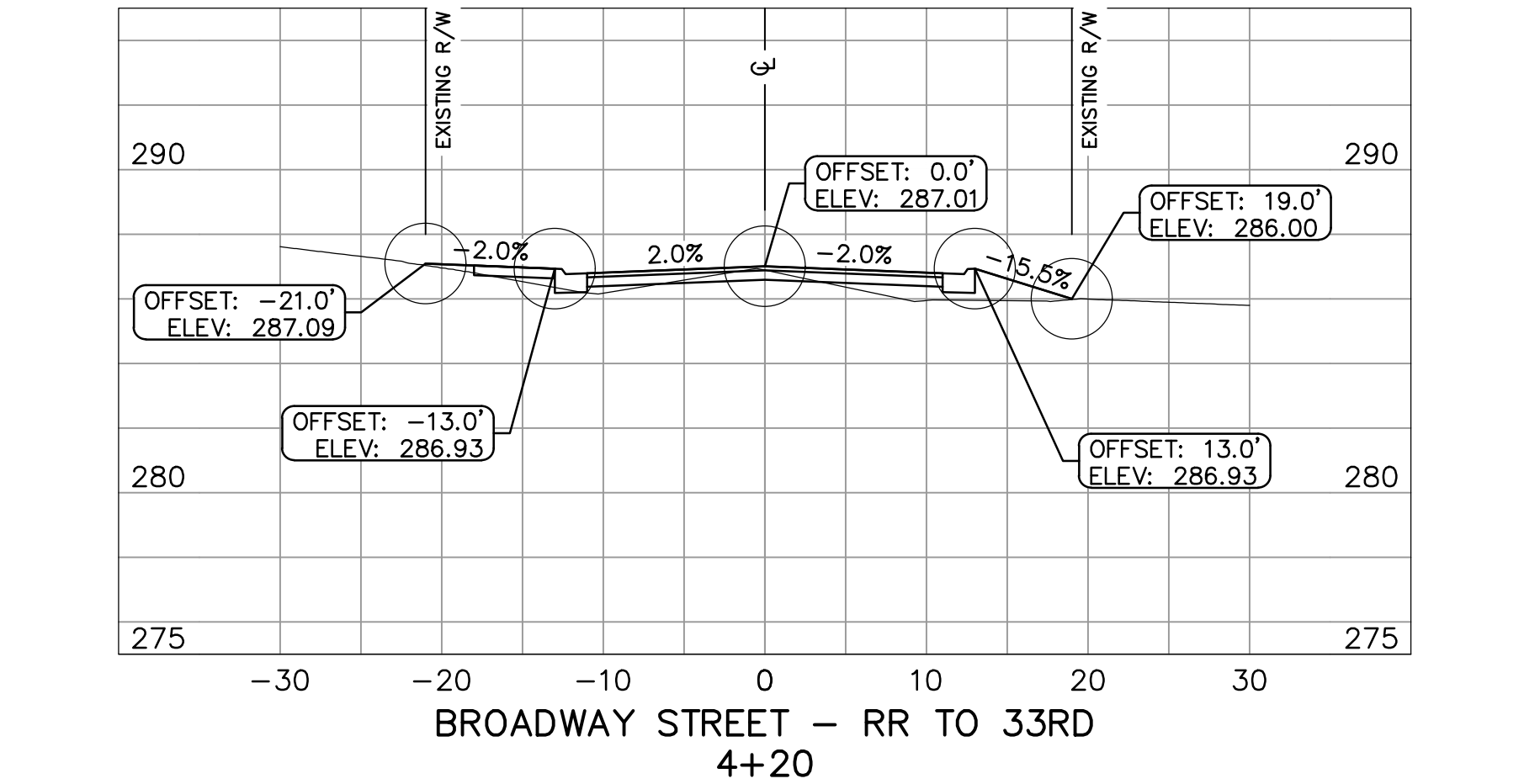
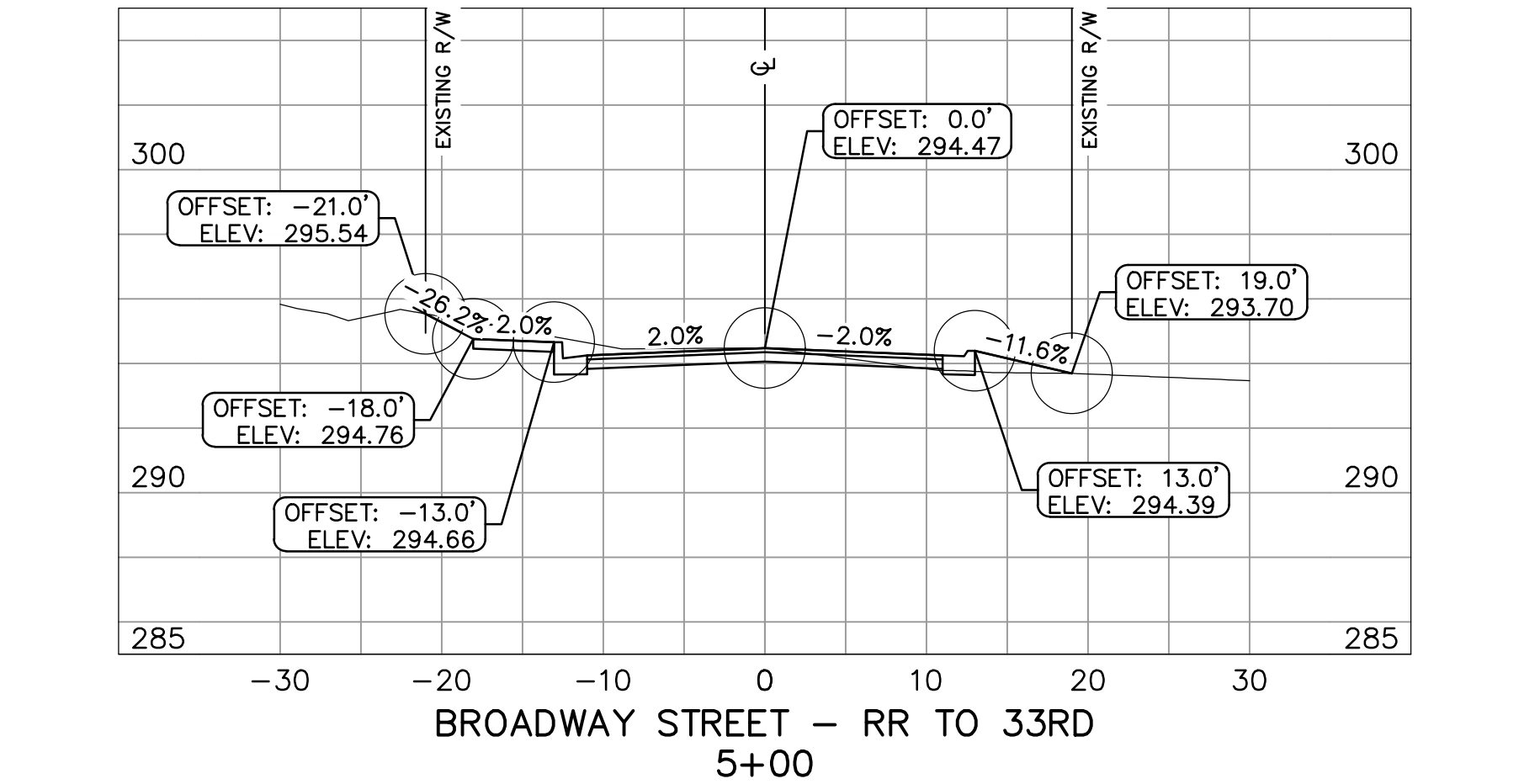
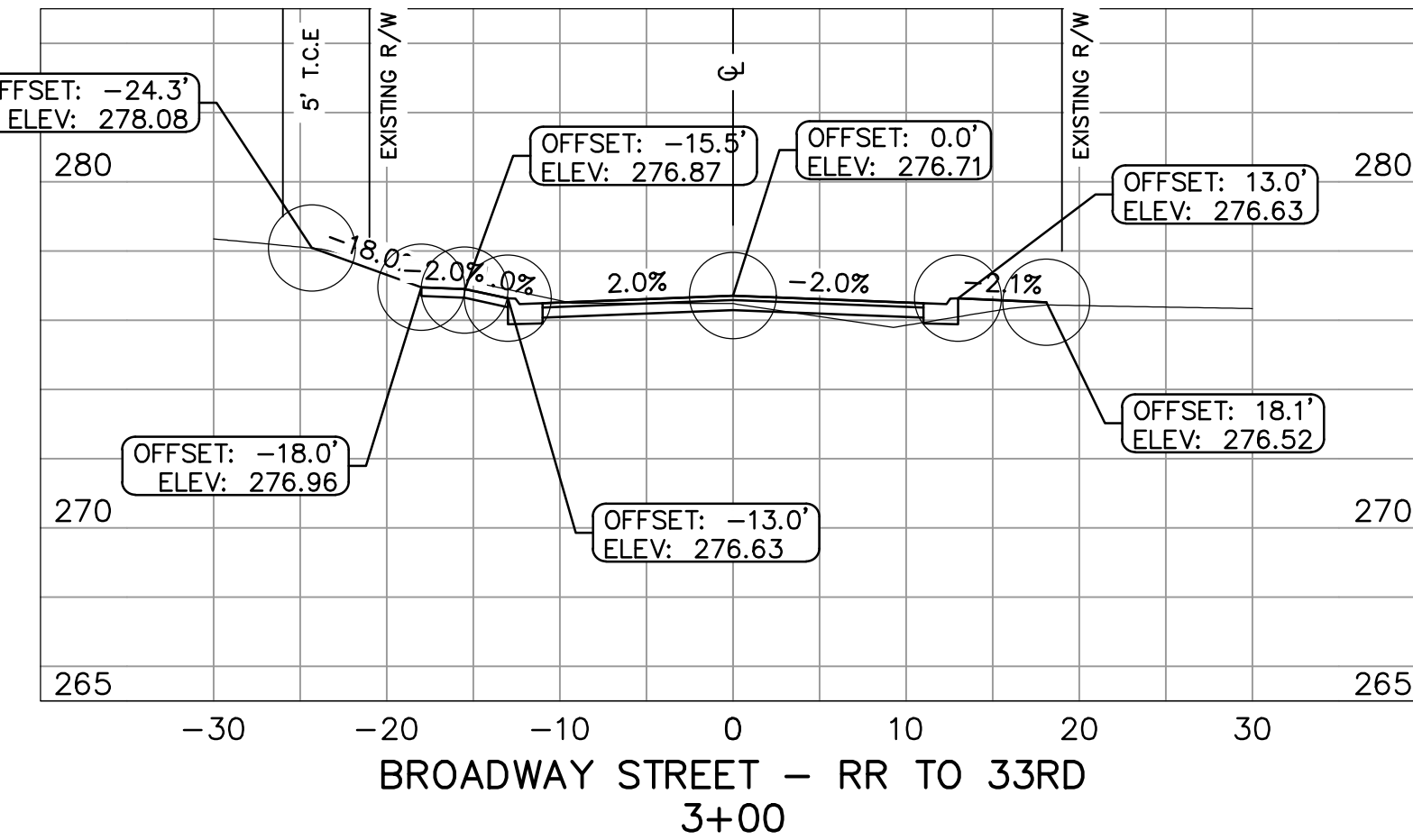
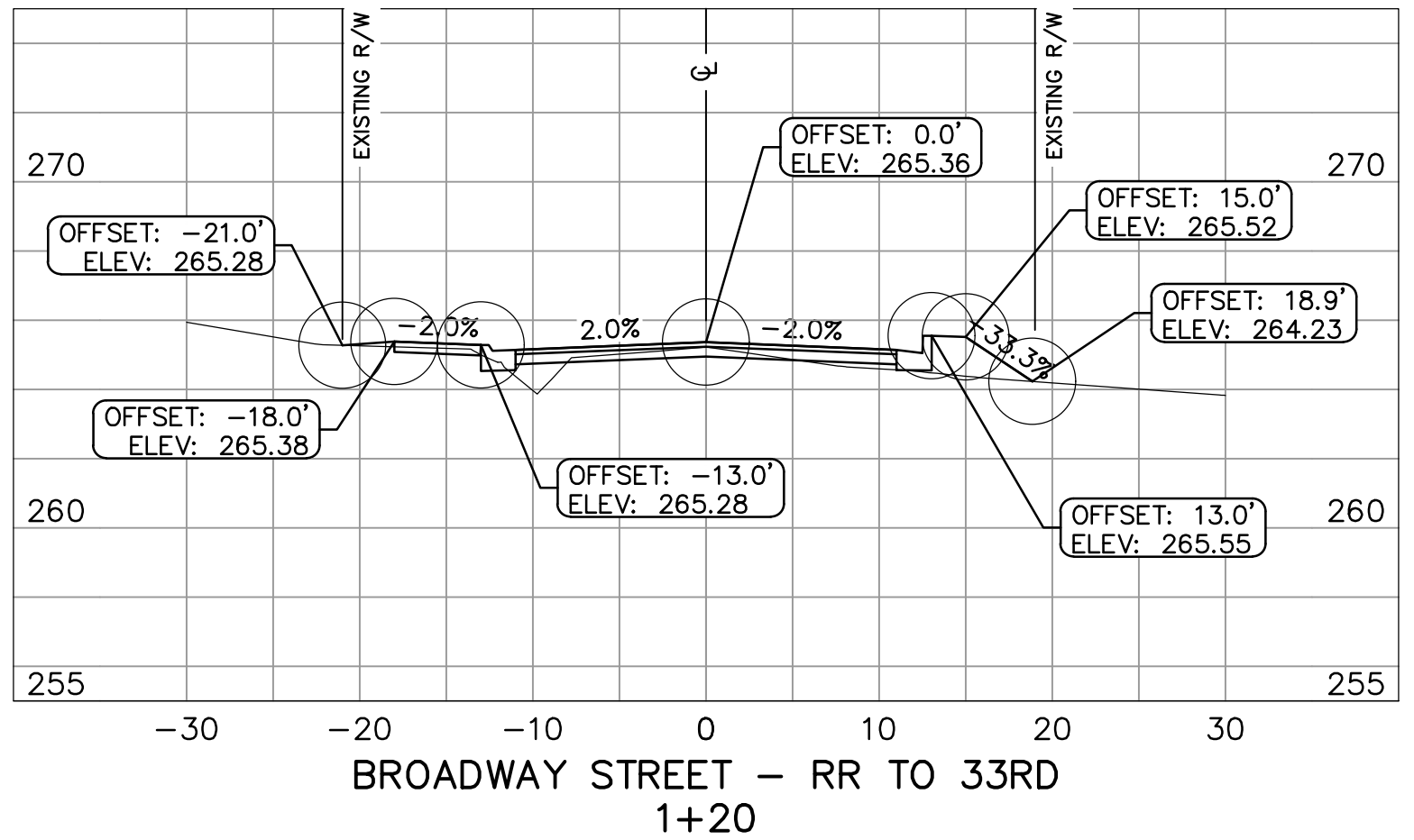
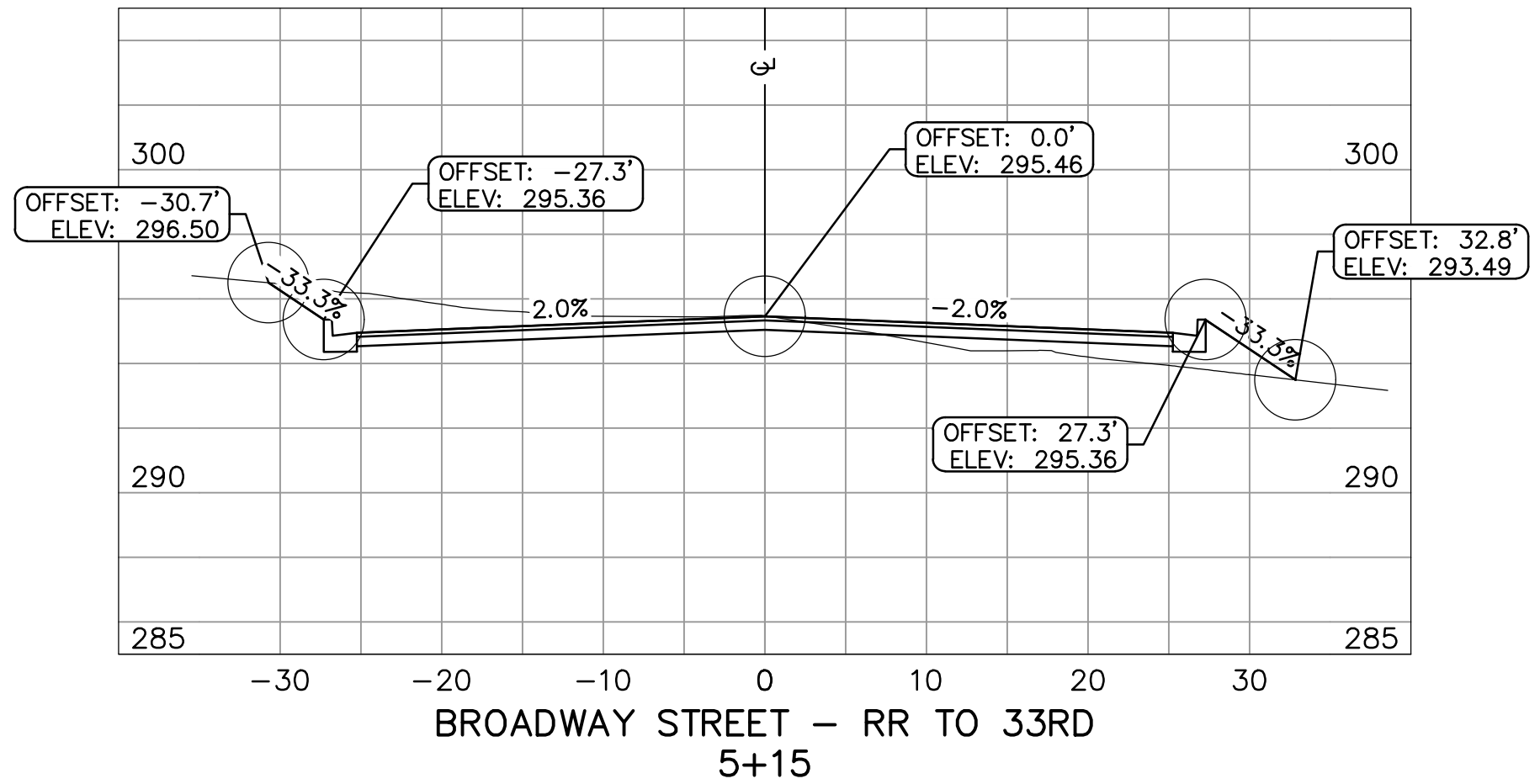
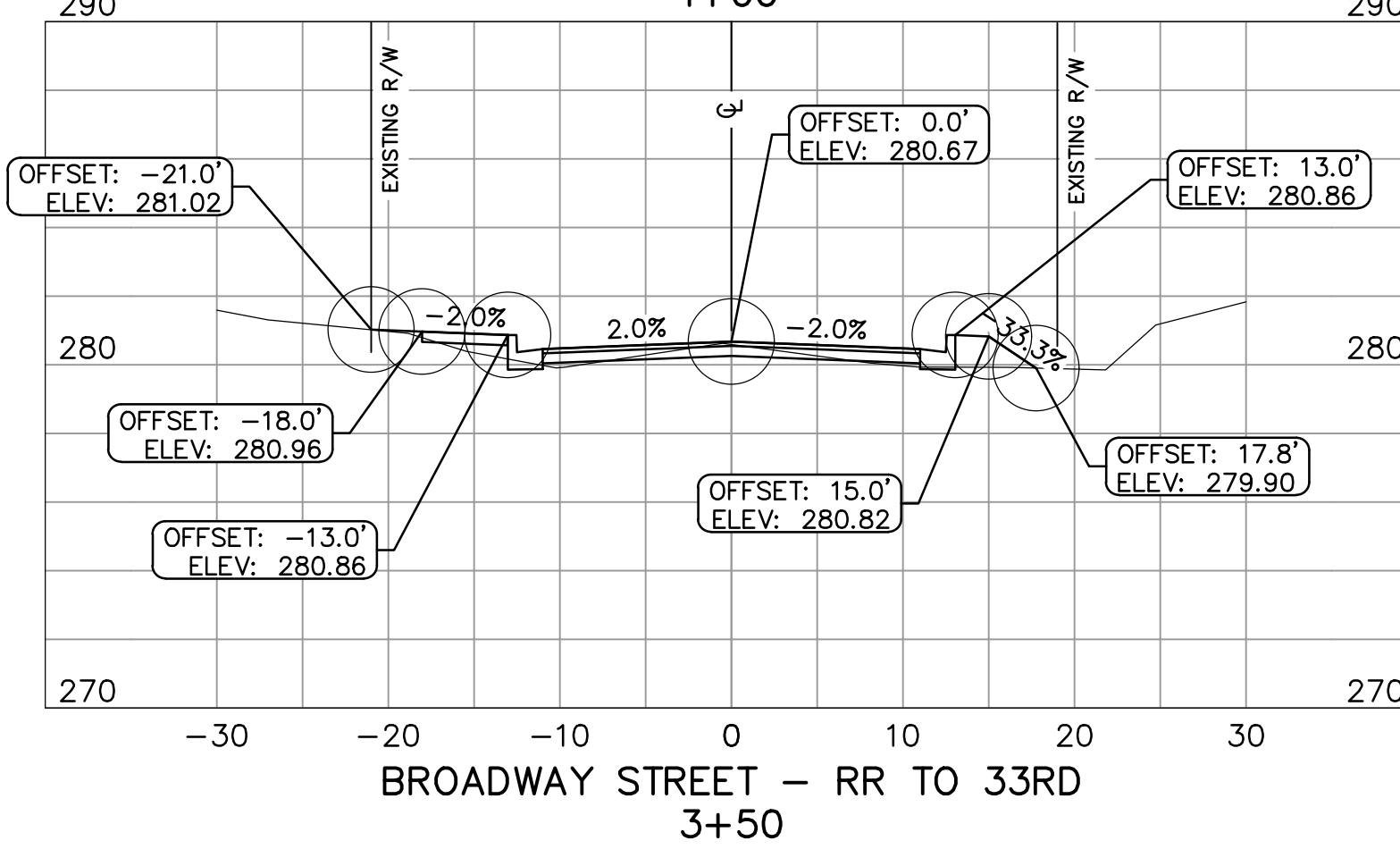
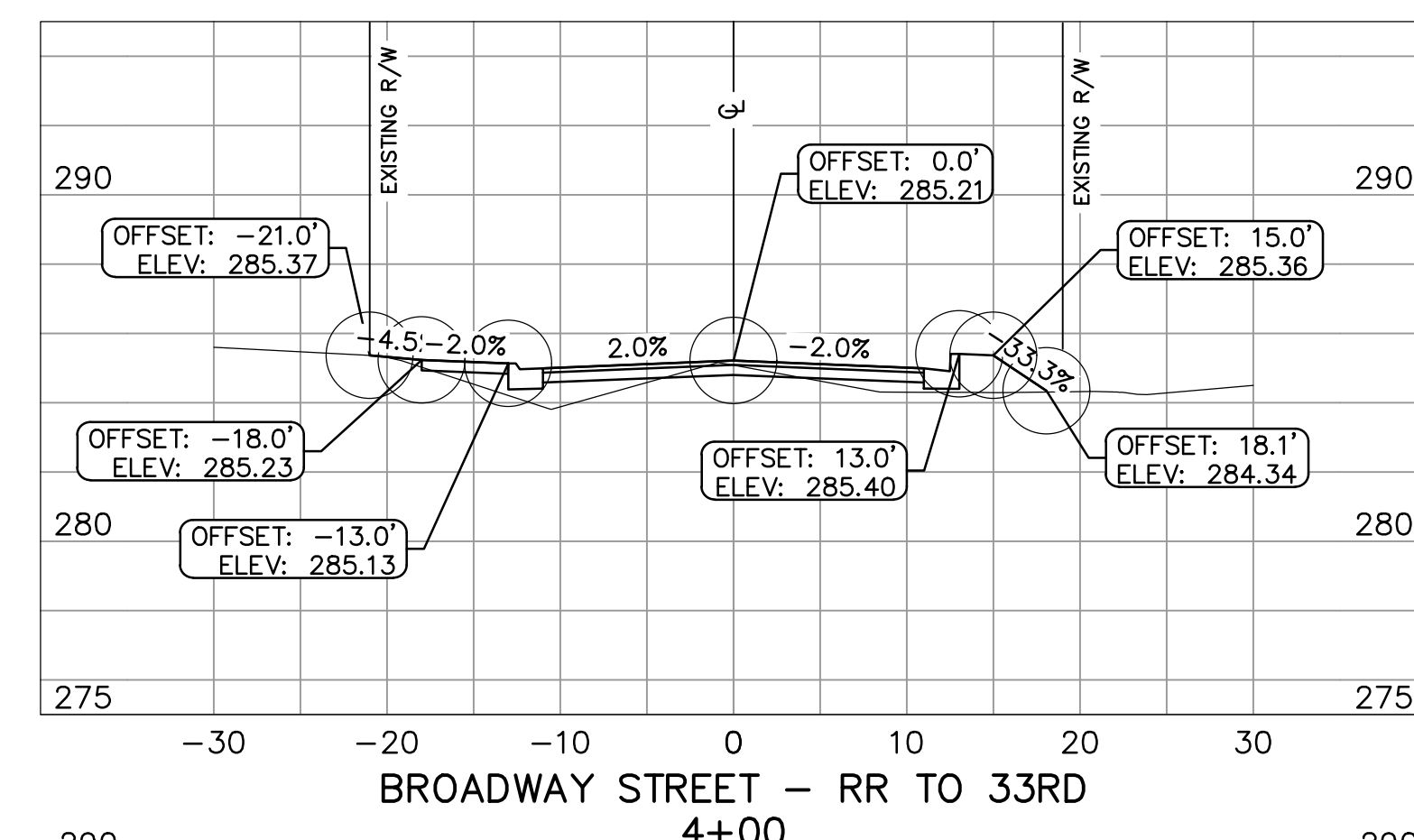
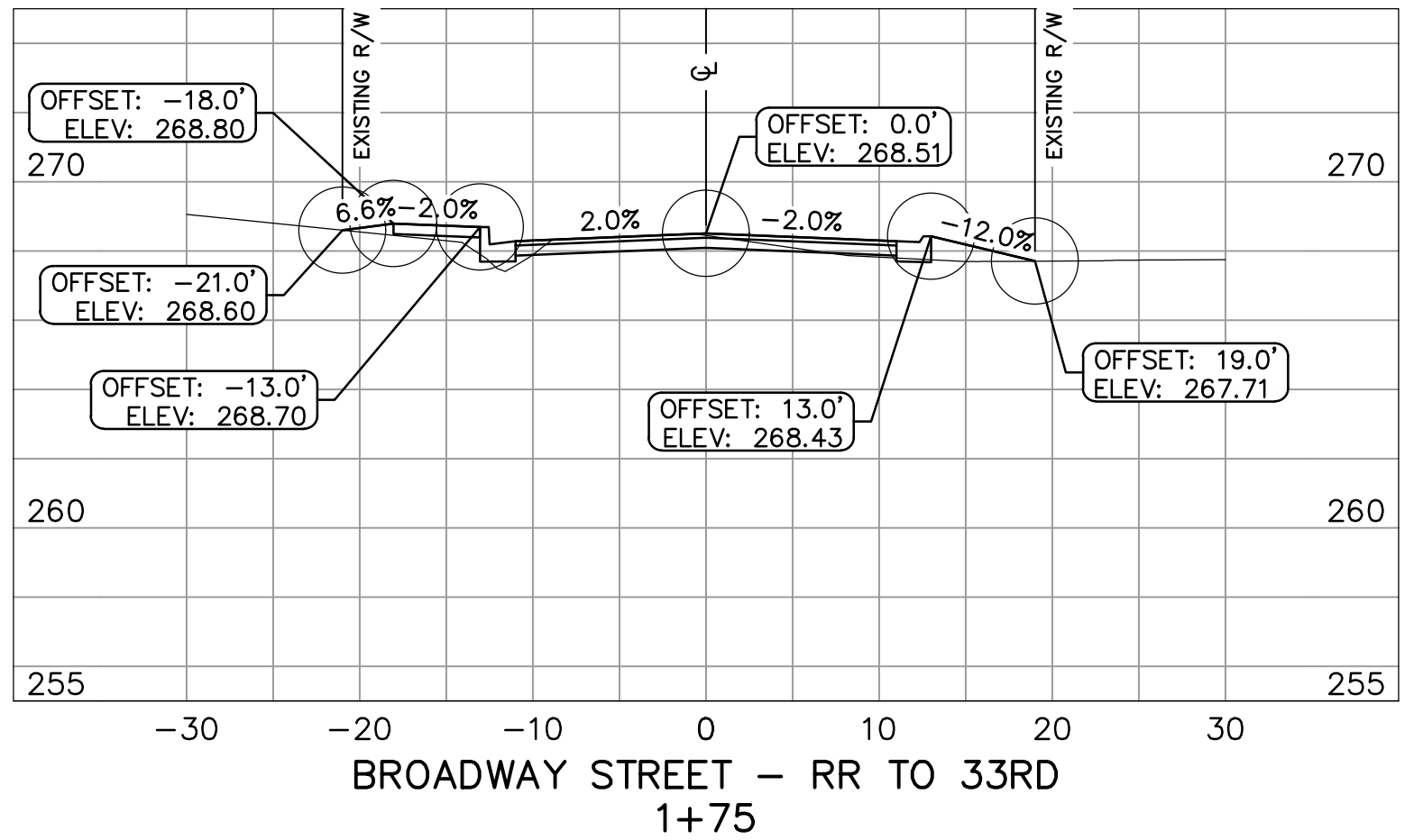
CITY OF LITTLE ROCK, ARKANSAS
 BROADWAY DRAINAGE
 CROSS SECTIONS
 60% SUBMITTAL

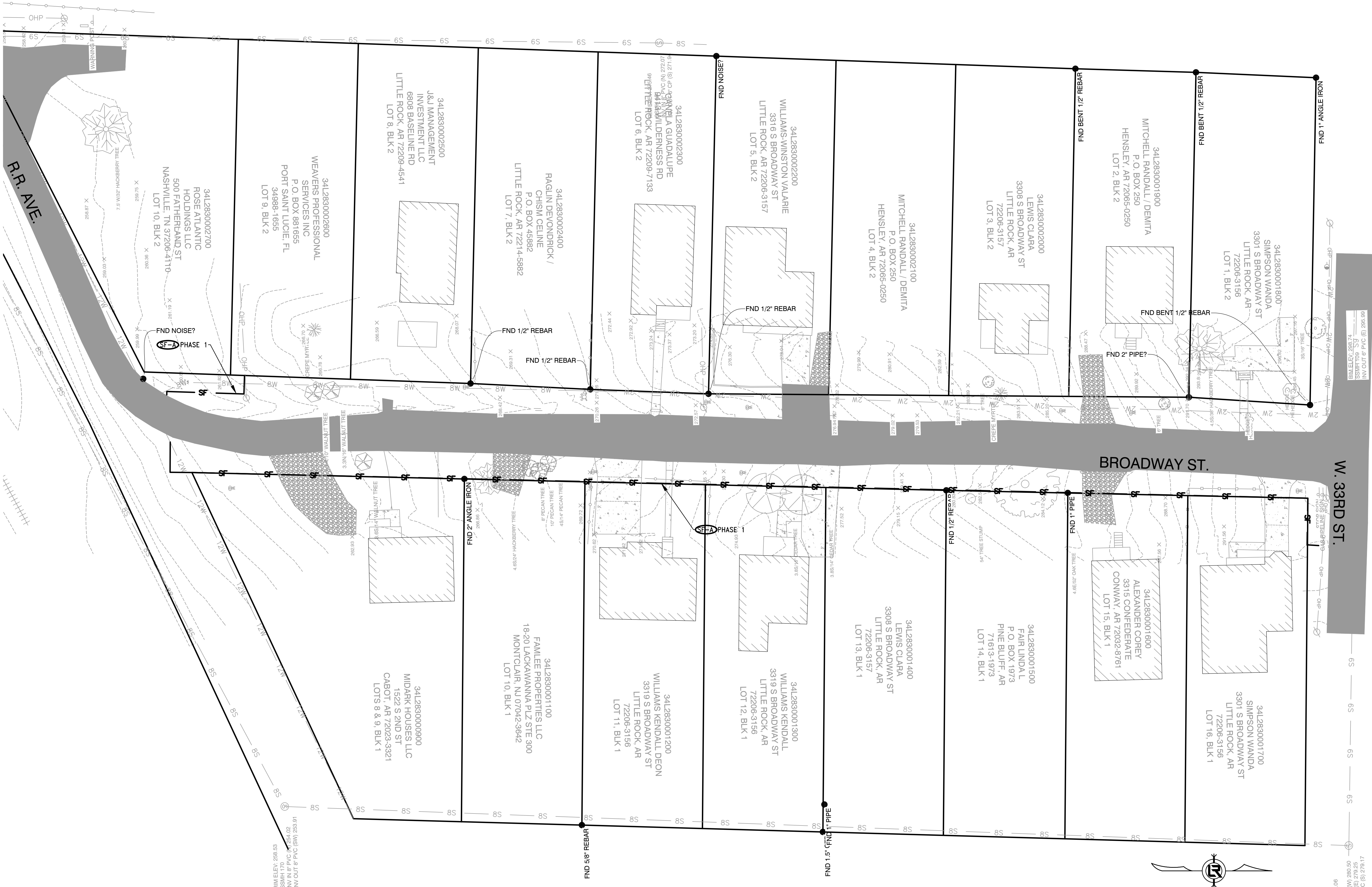
DEPARTMENT OF PUBLIC WORKS
 CIVIL ENGINEERING
 701 W. MARKHAM
 LITTLE ROCK, ARKANSAS 72201



PRELIMINARY

DRAWN BY
 TM
 DESIGNED
 VJW & TM
 CHECKED
 VJW
 DATE
 05-21-2024
 SCALE
 1"=10' (22X34)
 PROJECT NO.
 01-22-DR-181
 SHEET NO.
 C5





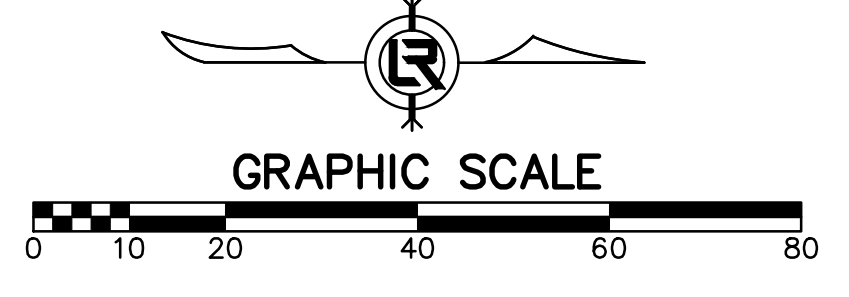
REVISIONS	DATE

CITY OF LITTLE ROCK, ARKANSAS
BROADWAY DRAINAGE
EROSION CONTROL PLAN PHASE 1
60% SUBMITTAL

DEPARTMENT OF PUBLIC WORKS
CIVIL ENGINEERING
101 W. MARKHAM
LITTLE ROCK, ARKANSAS 72201

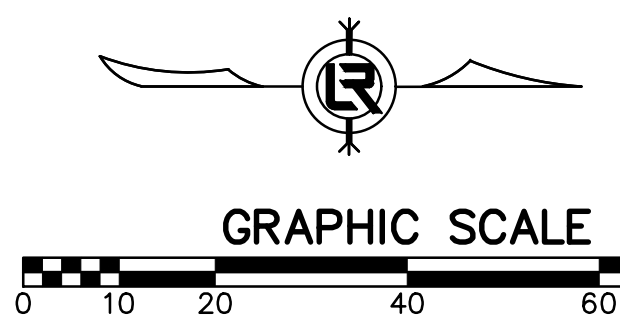
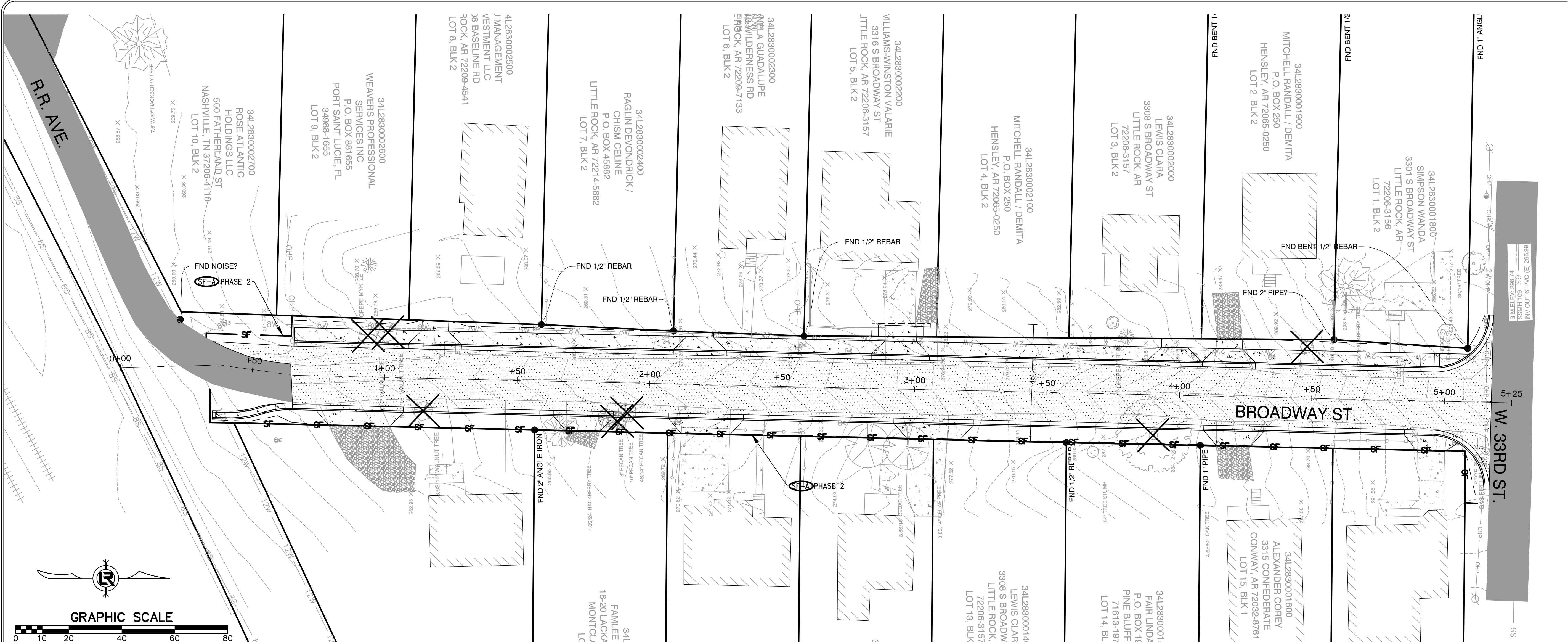
PRELIMINARY

DRAWN BY
TM
DESIGNED
VJW & TM
CHECKED
VJW
DATE
05-21-2024
SCALE
1"=20' (22X34)
PROJECT NO.
01-22-DR-181
SHEET NO.
06



RIM ELEV. 266.74
 1"=20'
 INV. OUT OF P.V.C. (S) 206.99

RIM ELEV. 266.53
 1"=20'
 INV. OUT OF P.V.C. (S) 279.25
 0.13 HHS
 0.07 287.74 V.I.B.



REVISIONS	DATE

CITY OF LITTLE ROCK, ARKANSAS
BROADWAY DRAINAGE
EROSION CONTROL PLAN PHASE 2 & 3
60% SUBMITTAL

DEPARTMENT OF PUBLIC WORKS
CIVIL ENGINEERING
701 W. MARKHAM
LITTLE ROCK, ARKANSAS 72201

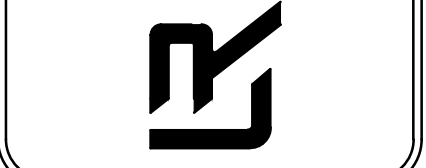
PRELIMINARY

DRAWN BY TM
DESIGNED VJW & TM
CHECKED VJW
DATE 05-21-2024
SCALE 1"=20' (22X34)
PROJECT NO. 01-22-DR-181
SHEET NO. C7

REVISIONS	DATE

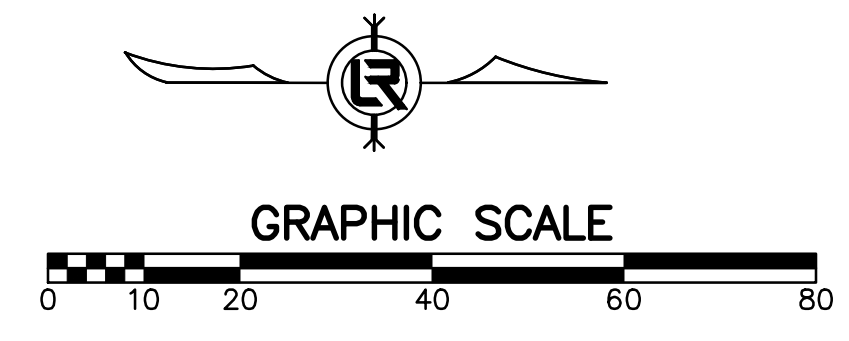
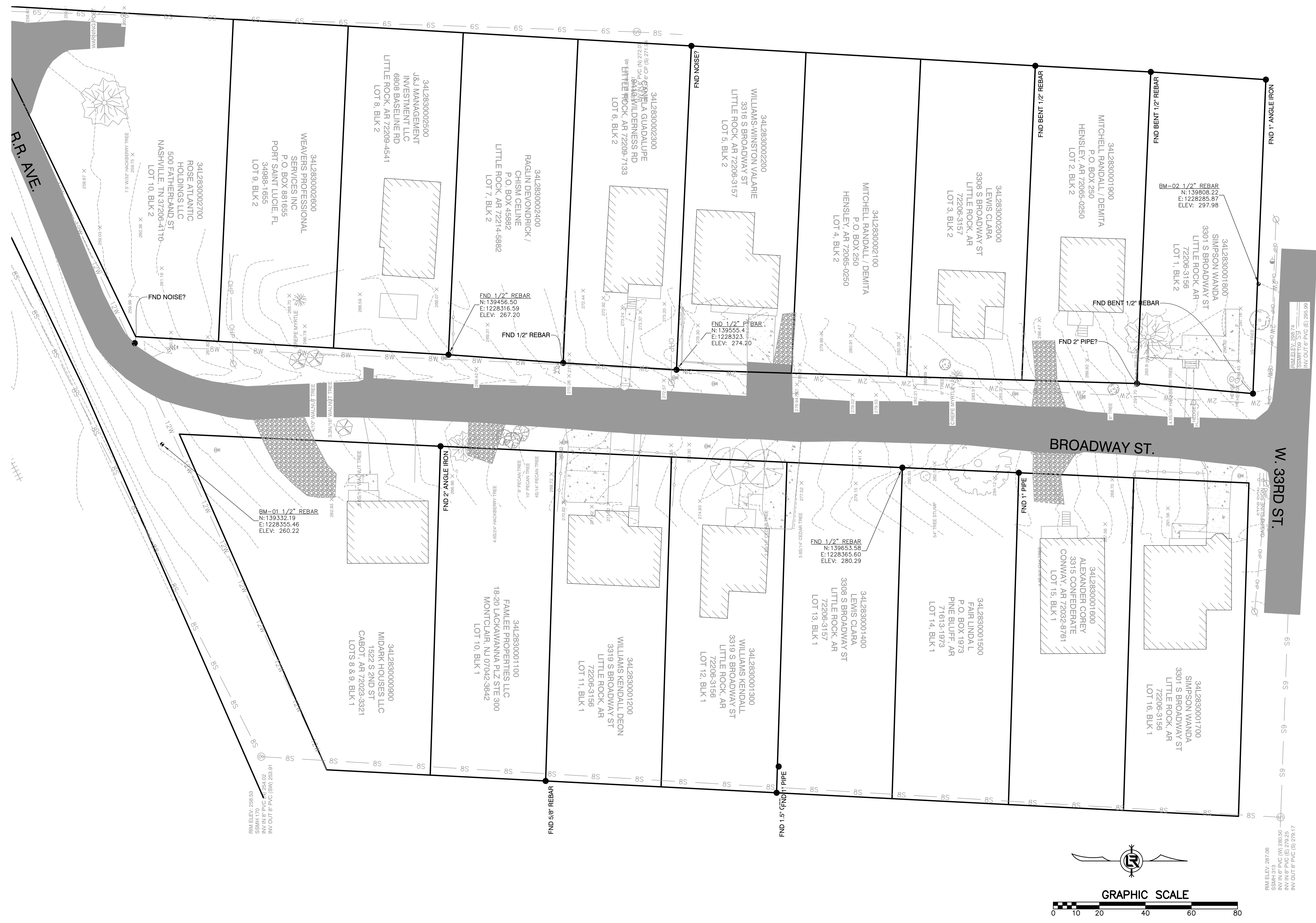
CITY OF LITTLE ROCK, ARKANSAS
 BROADWAY DRAINAGE
 SURVEY CONTROL PLAN
 60% SUBMITTAL

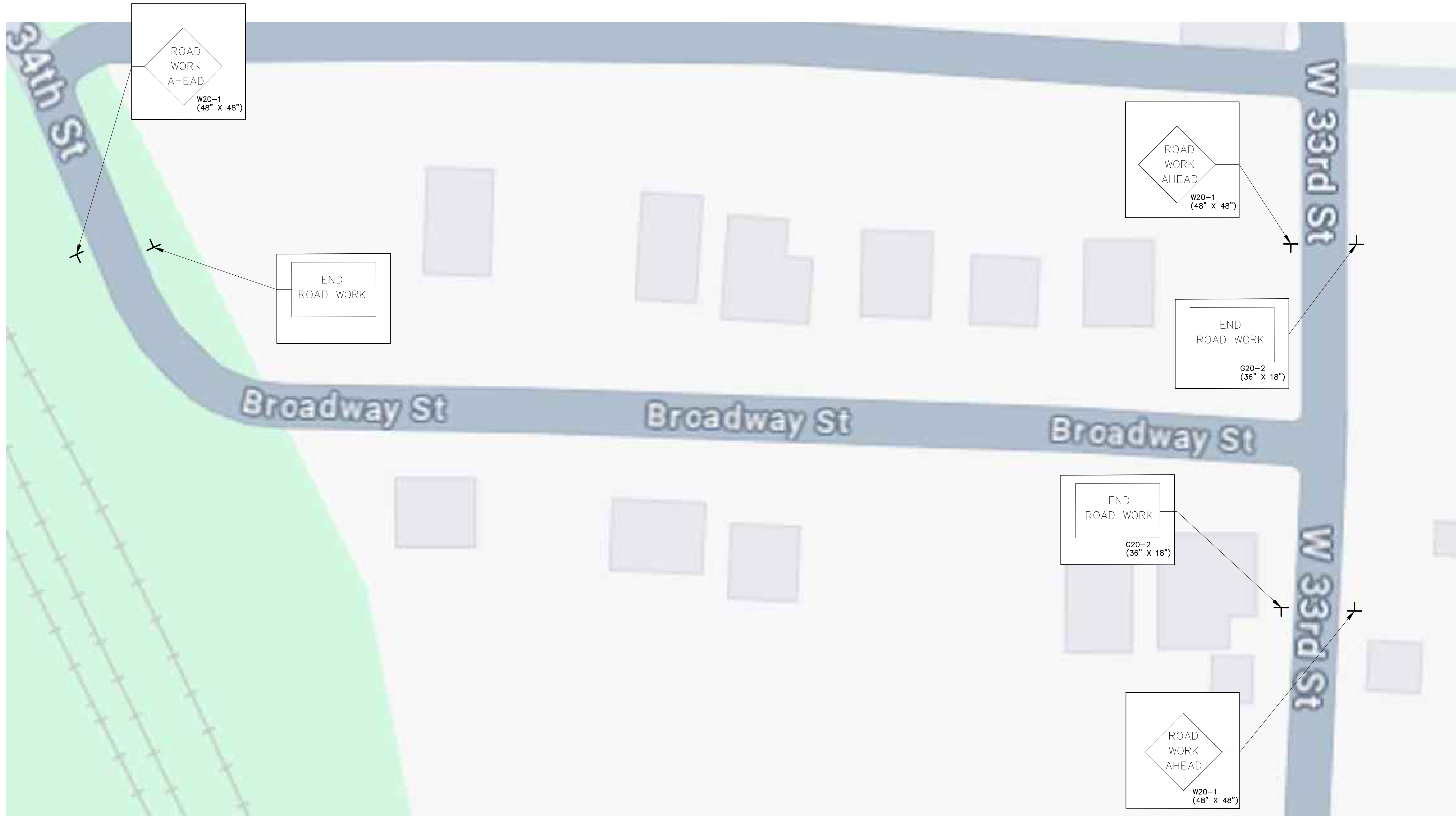
DEPARTMENT OF PUBLIC WORKS
 CIVIL ENGINEERING
 701 W. MARKHAM
 LITTLE ROCK, ARKANSAS 72201



PRELIMINARY

DRAWN BY
 TM
 DESIGNED
 VJW & TM
 CHECKED
 VJW
 DATE
 05-23-2024
 SCALE
 1"=20' (22X34)
 PROJECT NO.
 01-22-DR-181
 SHEET NO.
 C8



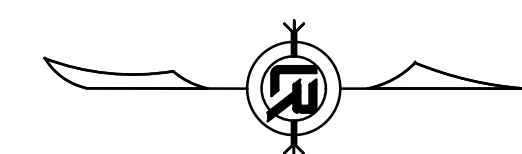


MAINTENANCE OF TRAFFIC NOTES:

1. WITHIN CONSTRUCTION LIMITS CONTRACTOR SHALL:

* MAINTAIN CONTINUOUS VEHICULAR ACCESS TO ALL RESIDENCES.

* PROVIDE, INSTALL, AND MAINTAIN (INCLUDING RELOCATION AS NEEDED) ALL TRAFFIC CONTROL DEVICES.



REVISIONS	DATE

CITY OF LITTLE ROCK, ARKANSAS
 BROADWAY DRAINAGE
 MAINTENANCE OF TRAFFIC PLAN
 60% SUBMITTAL

DEPARTMENT OF PUBLIC WORKS
 CIVIL ENGINEERING
 701 W. MARKHAM
 LITTLE ROCK, ARKANSAS 72201

PRELIMINARY

DRAWN BY
 TM
 DESIGNED
 VJW & TM
 CHECKED
 VJW
 DATE
 05-23-2024
 SCALE
 1"=20' (22X34)
 PROJECT NO.
 06-22-ST-211
 SHEET NO.
 C9