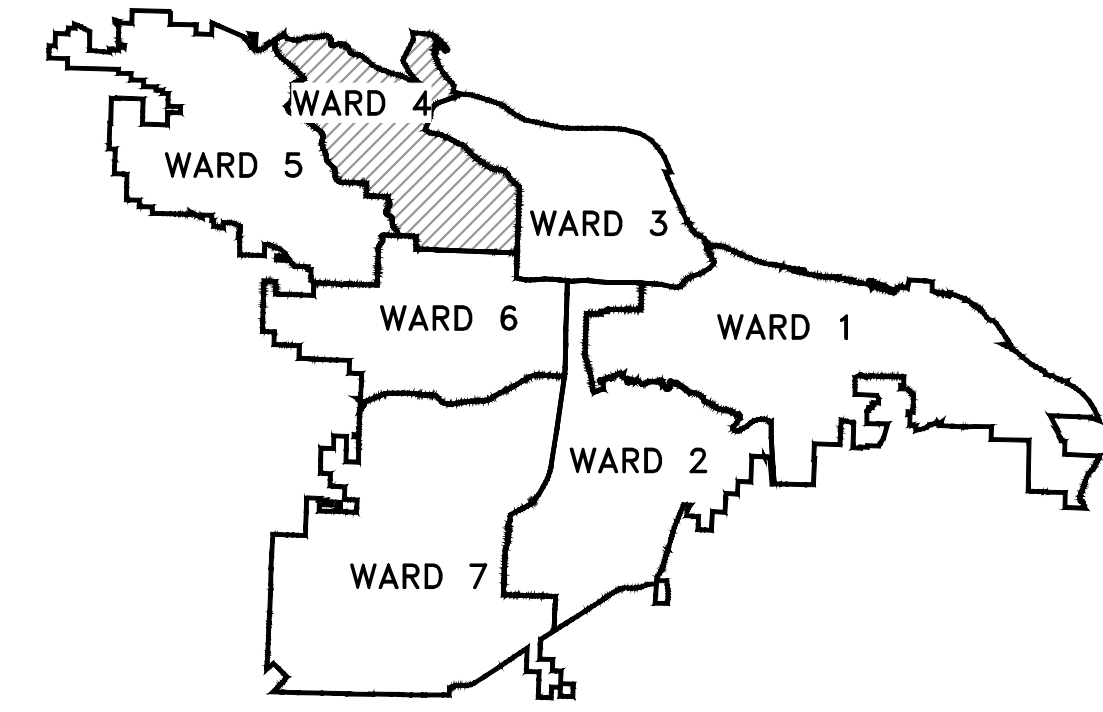


CLR PROJECT #04-22-SW-17

HIDDEN VALLEY DRIVE

SIDEWALK

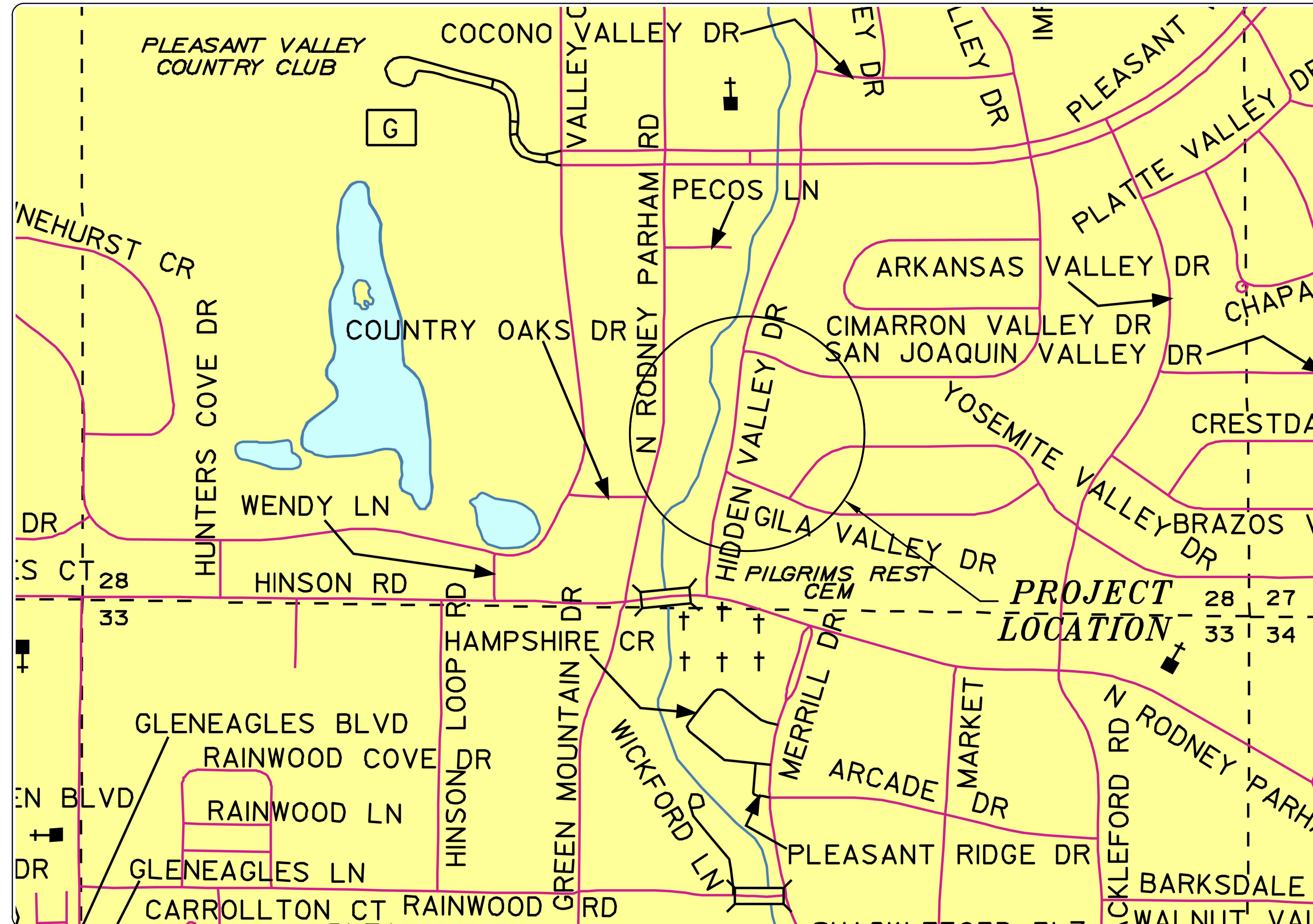
LITTLE ROCK, AR



PROJECT LOCATION - WARD 4

SHEET INDEX

TITLE SHEET	C-1
TOPOGRAPHIC SURVEY	V-1
LEGEND & QUANTITIES	C-2
HIDDEN VALLEY DRIVE SITE	C-3
EROSION CONTROL PLAN	C-4



DEPARTMENT OF PUBLIC WORKS
 CIVIL ENGINEERING
 701 WEST MARKHAM STREET
 LITTLE ROCK, ARKANSAS 72201

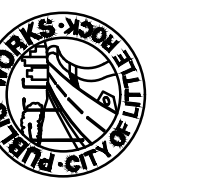
100% SUBMITTAL

THOMAS ENGINEERING COMPANY
 3810 LOOKOUT ROAD, N. LITTLE ROCK, AR. 72116
 TEL: 501-753-4463 FAX: 501-753-6814

REVISIONS	DATE

CITY OF LITTLE ROCK, ARKANSAS
 HIDDEN VALLEY DRIVE SIDEWALK 04-22-SW-17

TITLE SHEET



DEPARTMENT OF PUBLIC WORKS
 CIVIL ENGINEERING
 701 W. MARKHAM
 LITTLE ROCK, ARKANSAS 72201

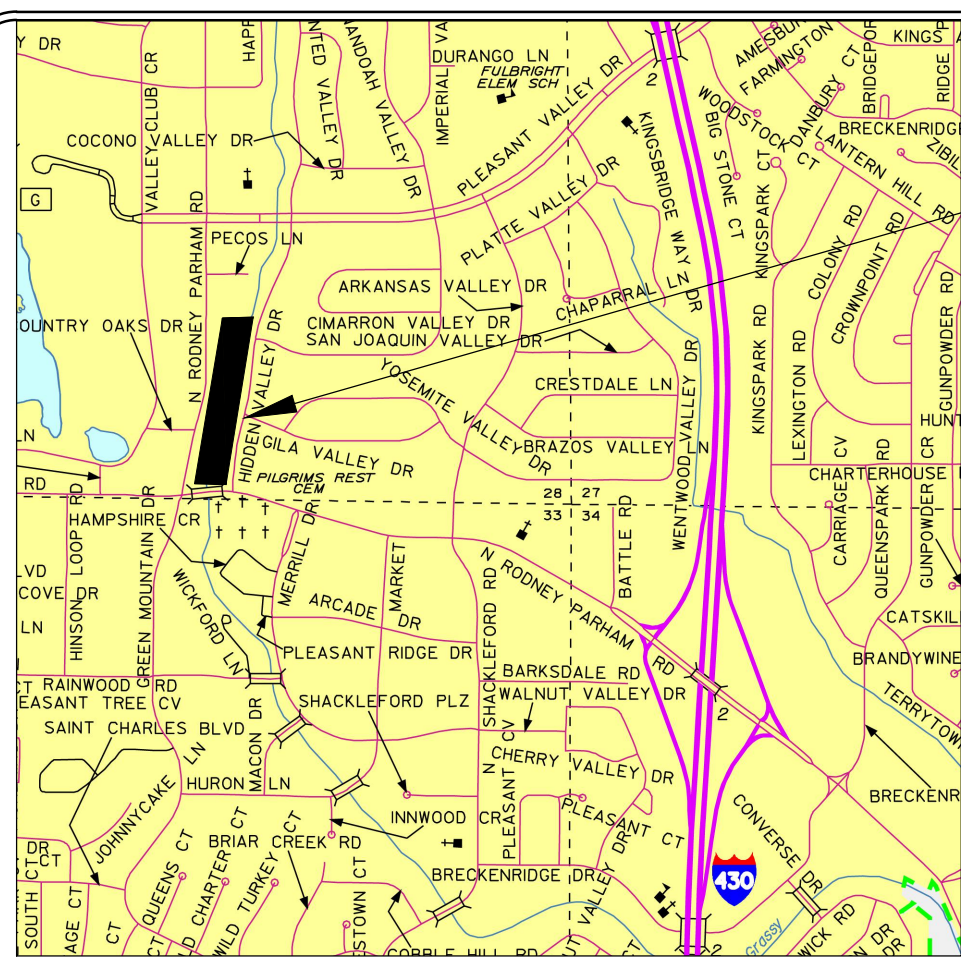


DRAWN BY
 JB
DESIGNED
 JB
CHECKED
 JB

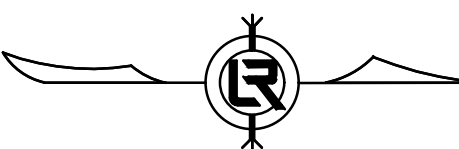
DATE
 5/16/24
SCALE
 N.T.S.

PROJECT NO.
 CLR #04-22-SW-17
SHEET NO.

C-1



THIS SITE

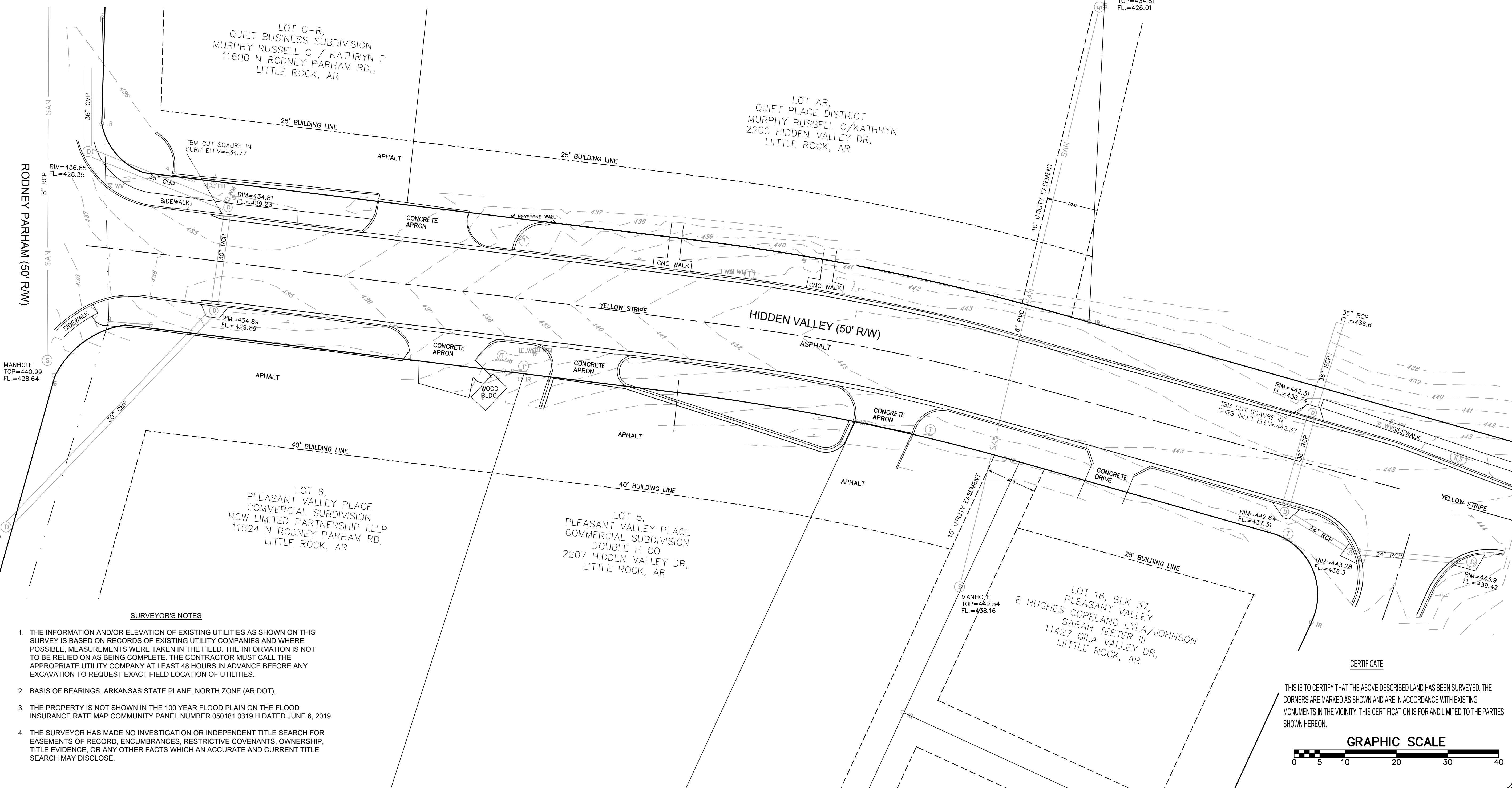


VICINITY MAP

EXISTING

IRON ROD	○ IR
WATER VALVE	⊗ WV
WATER METER	⊞ WM
FIRE HYDRANT	⊕ FH
GAS METER	⊞ GM
SIGN POST	⊕
BENCHMARK	⊕
STORM SEWER MANHOLE	⊕
SANITARY SEWER MANHOLE	⊕
UTILITY POLE	⊕
GUY WIRE	⊕
LIGHT POLE	⊕
MAILBOX	⊕
CABLE BOX	⊕

PROPERTY LINE	---
SETBACK LINE	- - - -
EASEMENT LINE	---
CURB	---
FENCE	— x — x — x
OVERHEAD ELECTRIC	—
CONTOUR LINE	- - -
SEWER LINE	---
STORM DRAIN LINE	---



- SURVEYOR'S NOTES**
1. THE INFORMATION AND/OR ELEVATION OF EXISTING UTILITIES AS SHOWN ON THIS SURVEY IS BASED ON RECORDS OF EXISTING UTILITY COMPANIES AND WHERE POSSIBLE, MEASUREMENTS WERE TAKEN IN THE FIELD. THE INFORMATION IS NOT TO BE RELIED ON AS BEING COMPLETE. THE CONTRACTOR MUST CALL THE APPROPRIATE UTILITY COMPANY AT LEAST 48 HOURS IN ADVANCE BEFORE ANY EXCAVATION TO REQUEST EXACT FIELD LOCATION OF UTILITIES.
 2. BASIS OF BEARINGS: ARKANSAS STATE PLANE, NORTH ZONE (AR DOT).
 3. THE PROPERTY IS NOT SHOWN IN THE 100 YEAR FLOOD PLAIN ON THE FLOOD INSURANCE RATE MAP COMMUNITY PANEL NUMBER 050181 0319 H DATED JUNE 6, 2019.
 4. THE SURVEYOR HAS MADE NO INVESTIGATION OR INDEPENDENT TITLE SEARCH FOR EASEMENTS OF RECORD, ENCUMBRANCES, RESTRICTIVE COVENANTS, OWNERSHIP, TITLE EVIDENCE, OR ANY OTHER FACTS WHICH AN ACCURATE AND CURRENT TITLE SEARCH MAY DISCLOSE.

CERTIFICATE

THIS IS TO CERTIFY THAT THE ABOVE DESCRIBED LAND HAS BEEN SURVEYED. THE CORNERS ARE MARKED AS SHOWN AND ARE IN ACCORDANCE WITH EXISTING MONUMENTS IN THE VICINITY. THIS CERTIFICATION IS FOR AND LIMITED TO THE PARTIES SHOWN HEREON.

GRAPHIC SCALE

REVISIONS	DATE

CITY OF LITTLE ROCK, ARKANSAS
 HIDDEN VALLEY DRIVE SIDEWALK 04-22-SW-17
 TOPOGRAPHIC SURVEY

DEPARTMENT OF PUBLIC WORKS
 CIVIL ENGINEERING
 701 W. MARKHAM
 LITTLE ROCK, ARKANSAS 72201

DRAWN BY
 MC
 DESIGNED
 MC
 CHECKED
 MC
 DATE
 1/10/24
 SCALE
 1" = 20'

PROJECT NO.
 CLR #04-22-SW-17
 SHEET NO.
 V-1


ESTIMATED QUANTITIES			
CLR PROJECT # 04-22-SW-17			
HIDDEN VALLEY DRIVE SIDEWALK - WARD 4			
15-Mar-24			

ITEM #	ITEM DESCRIPTION	UNIT	QUANTITY
002.01	Site Preparation	LS	1
003.06	Borrow Material	CY	15
009.10	Concrete Sidewalk (4" Thick)	SF	1725
009.60	Concrete Steps	SF	65
014.10	Solid Sodding (Bermuda)	SY	560
016.01	Maintenance of Traffic	LS	1
019.01	Final Cleanup	LS	1
024.05	Silt Fence (E-11)	LF	350
024.15	Drop Inlet Protection Silt Fence (E-7)	LF	2
007.06	Concrete Drive & Apron 6"	SF	515

EXISTING		PROPOSED
IRON ROD	○ IR	PROPOSED CONTOUR
PK NAIL	○ PK	PROPOSED SPOT ELEVATION
R.R. SPIKE	○ RR(Sp)	PROPOSED SPOT CURB ELEVATION
CONC. MONUMENT	□ CM	STORM SEWER – PIPE
WATER VALVE	⊗ WV	STORM SEWER – MITERED END SECTION
WATER METER	⊗ WM	STORM SEWER – GRATE INLET
FIRE HYDRANT	⊗ FH	STORM SEWER – JUNCTION BOX
GAS METER	⊗ GM	STORM SEWER – FLARED END SECTION
GAS VALVE	⊗ GV	STORM SEWER – HEADWALL
CLEAN-OUT	○ CO	STORM SEWER – SINGLE WING
GUARD POST (BOLLARD)	• GP	STORM SEWER – DOUBLE WING
SIGN POST	⊕	STORM SEWER – AREA INLET
BENCHMARK	⊕	GRADE BREAK LINE
STORM SEWER MANHOLE	⊕	HIGH POINT
SANITARY SEWER MANHOLE	⊕	LOW POINT
TELEPHONE MANHOLE	⊕	CUT LINE
ELECTRIC MANHOLE	⊕	FILL LINE
TELEPHONE BOX	⊕	SANITARY SEWER PIPE
ELECTRIC BOX	⊕	SANITARY SEWER MANHOLE
CABLE BOX	⊕	PROPOSED CURB
UTILITY POLE	⊕	PROPOSED CONCRETE
GUY WIRE	⊕	CONSTRUCTION – ENTRANCE/EXIT
LIGHT POLE	⊕	CHECK DAM
POST OR POLE (TYPE AS NOTED)	⊕	DIVERSION BERM
MAILBOX	⊕	DOWNDRAIN STRUCTURE – TEMPORARY
DECIDUOUS TREE	⊕	ROCK DAM
EVERGREEN/CONIFEROUS TREE	⊕	SEDIMENT BARRIER – SILT FENCE
BUSH	⊕	SEDIMENT BARRIER – GRAVEL RING
PROPERTY LINE	⊕	SEDIMENT BARRIER – BLOCK & GRAVEL
SETBACK LINE	⊕	SEDIMENT BARRIER – BLOCK
EASEMENT LINE	⊕	TEMPORARY SEDIMENT BASIN
CURB	⊕	SILT FENCE – TYPE A
FENCE	⊕	SILT FENCE – TYPE B
OVERHEAD ELECTRIC	⊕	SILT FENCE – TYPE C
OVERHEAD TELEPHONE	⊕	STORM DRAIN OUTLET PROTECTION
OVERHEAD CABLE	⊕	SURFACE ROUGHENING
UNDERGROUND TELEPHONE	⊕	DISTURBED AREA STABILIZATION –TEMPORARY STABILIZATION
UNDERGROUND ELECTRIC	⊕	DISTURBED AREA STABILIZATION –TEMPORARY GRASSING
UNDERGROUND CABLE	⊕	DISTURBED AREA STABILIZATION –PERMANENT GRASSING
WATER LINE	⊕	MATting/BLANKETS
SEWER LINE	⊕	
GAS LINE	⊕	
STORM SEWER/CULVERT	⊕	
EDGE OF WOODS	⊕	
CONTOUR LINE	⊕	

REVISIONS	DATE

CITY OF LITTLE ROCK, ARKANSAS
HIDDEN VALLEY DRIVE SIDEWALK 04-22-SW-17
LEGEND & QUANTITIES


 DEPARTMENT OF PUBLIC WORKS
 CIVIL ENGINEERING
 701 W. MARKHAM
 LITTLE ROCK, ARKANSAS 72201


 REGISTERED PROFESSIONAL ENGINEER
 No. 11643
 THOMAS R. POWELL

DRAWN BY JB
DESIGNED JB
CHECKED JB
DATE 5/16/24
SCALE NTS
PROJECT NO. CLR #04-22-SW-17
SHEET NO. C-2

100% SUBMITTAL


THOMAS ENGINEERING COMPANY
 3810 LOOKOUT ROAD, N. LITTLE ROCK, AR. 72116
 TEL: 501-753-4463 FAX: 501-753-6814

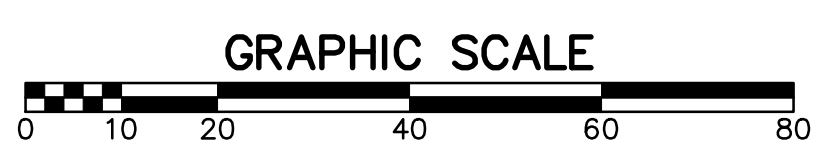
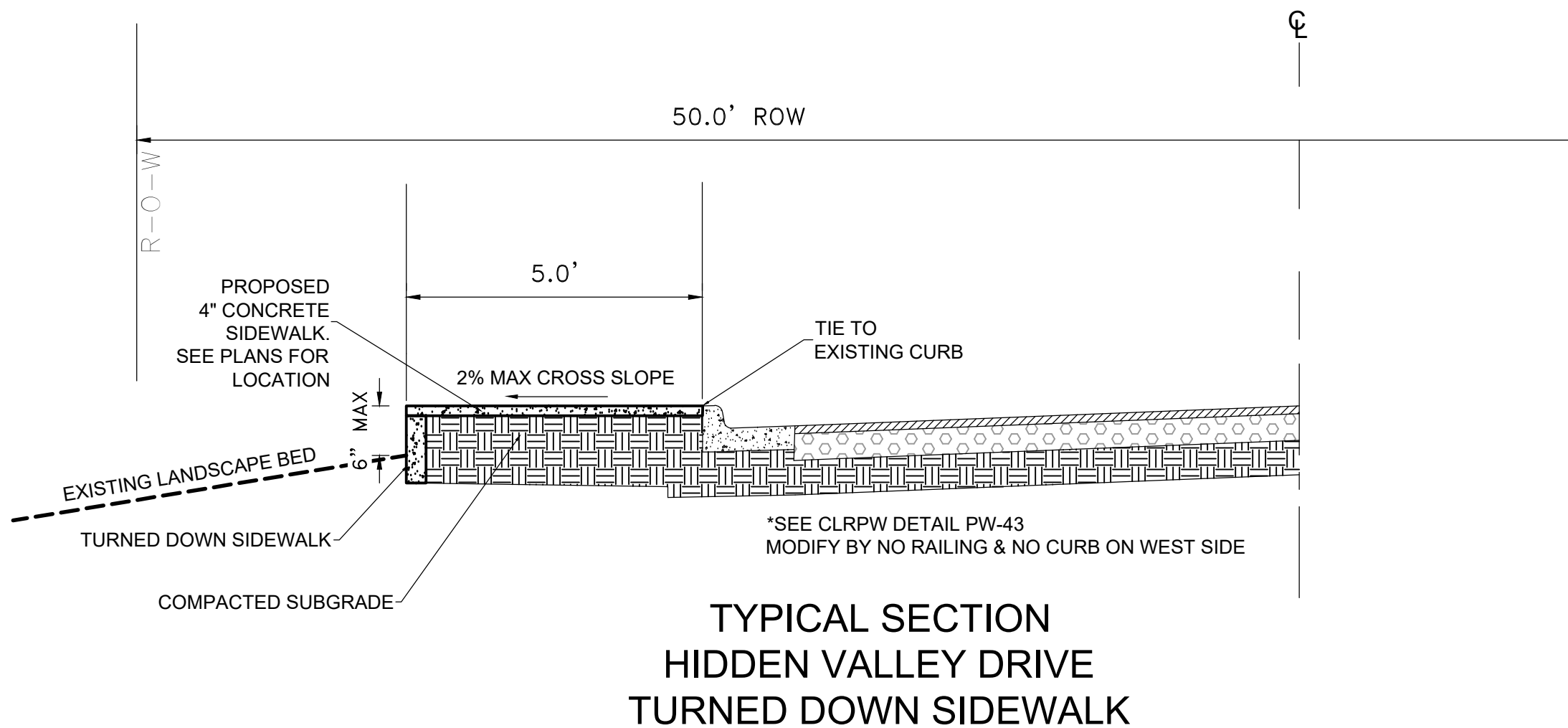
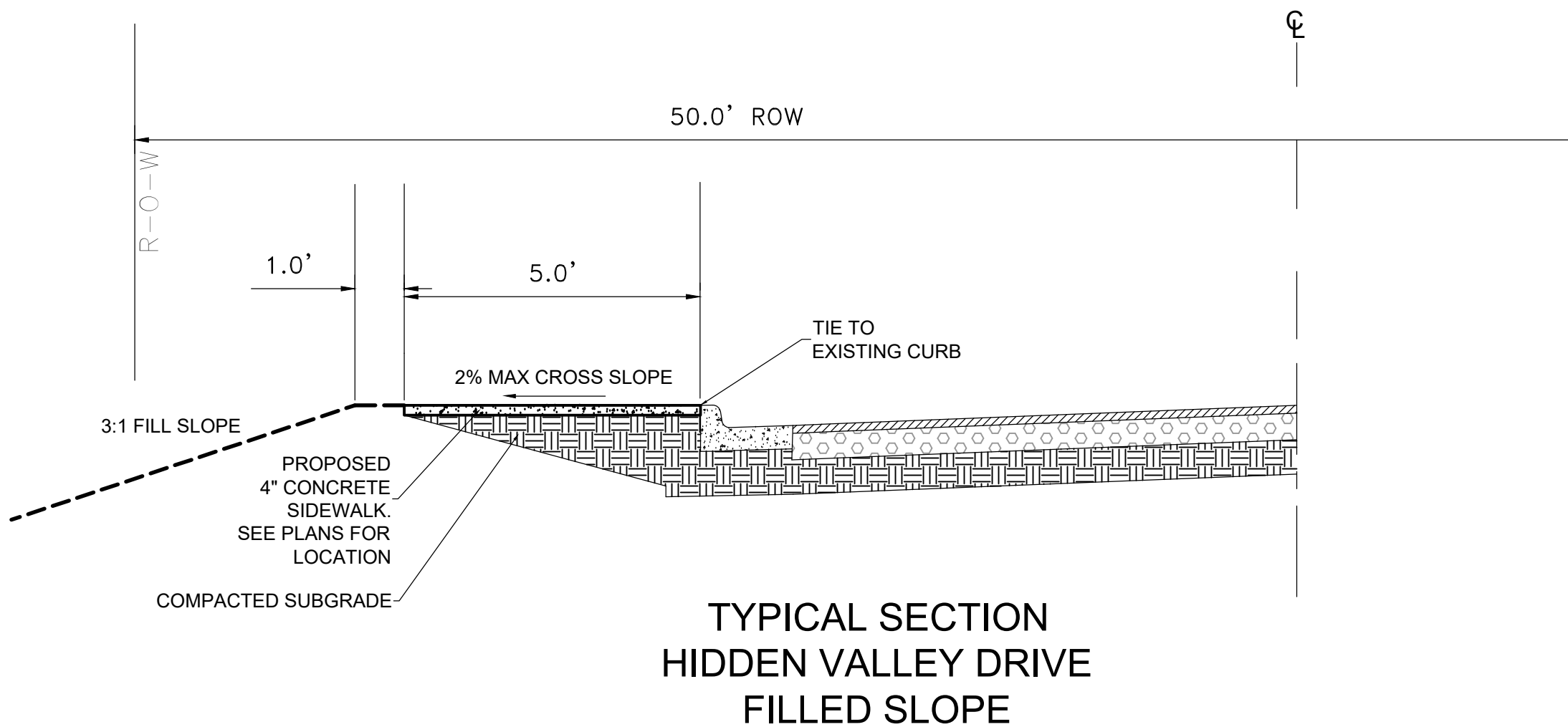
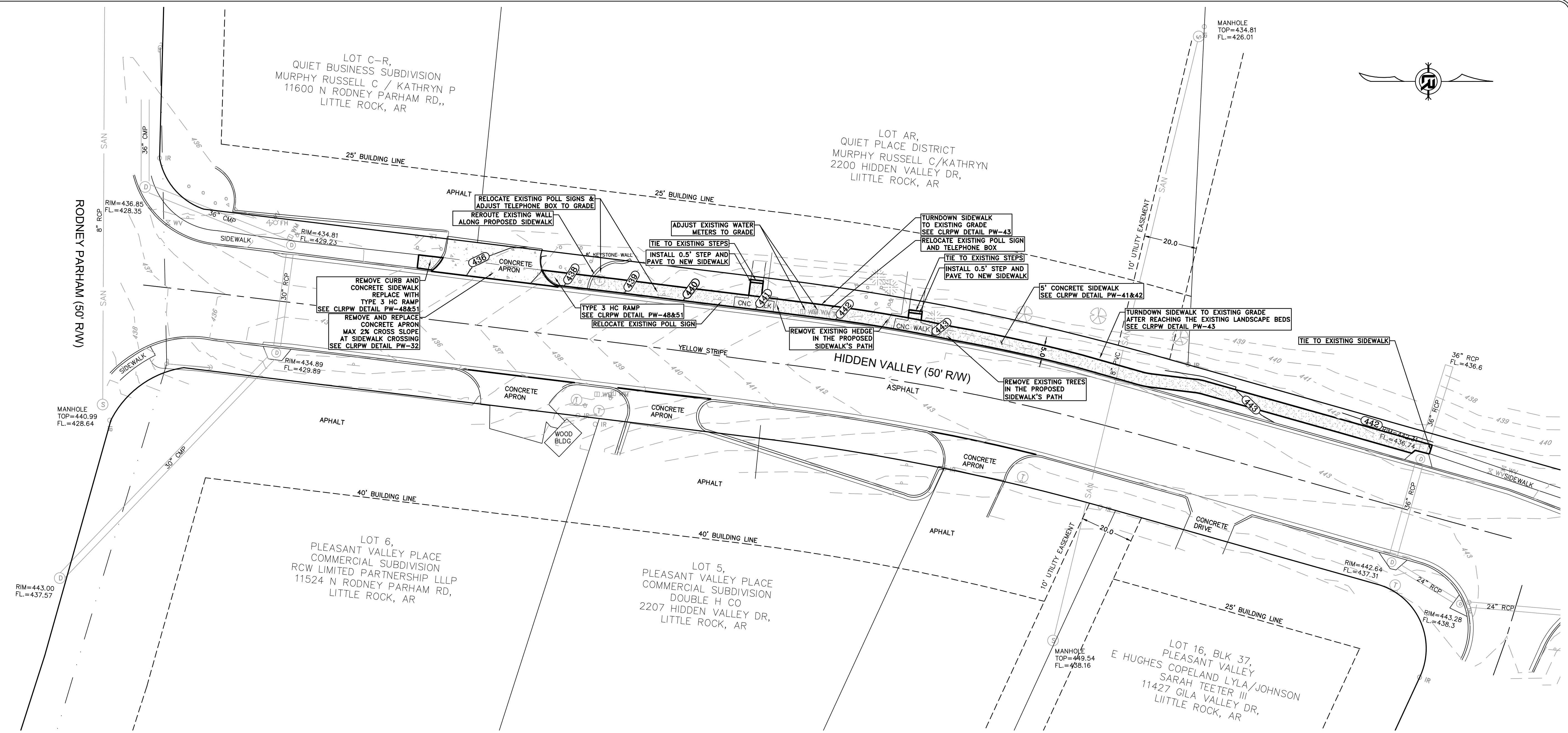
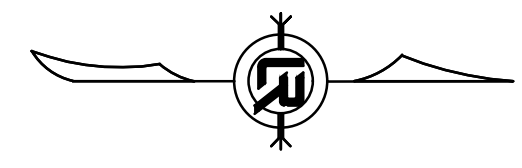
REVISIONS	DATE

CITY OF LITTLE ROCK, ARKANSAS
HIDDEN VALLEY DRIVE SIDEWALK 04-22-SW-17
SITE PLAN

DEPARTMENT OF PUBLIC WORKS
CIVIL ENGINEERING
701 W. MARKHAM
LITTLE ROCK, ARKANSAS 72201

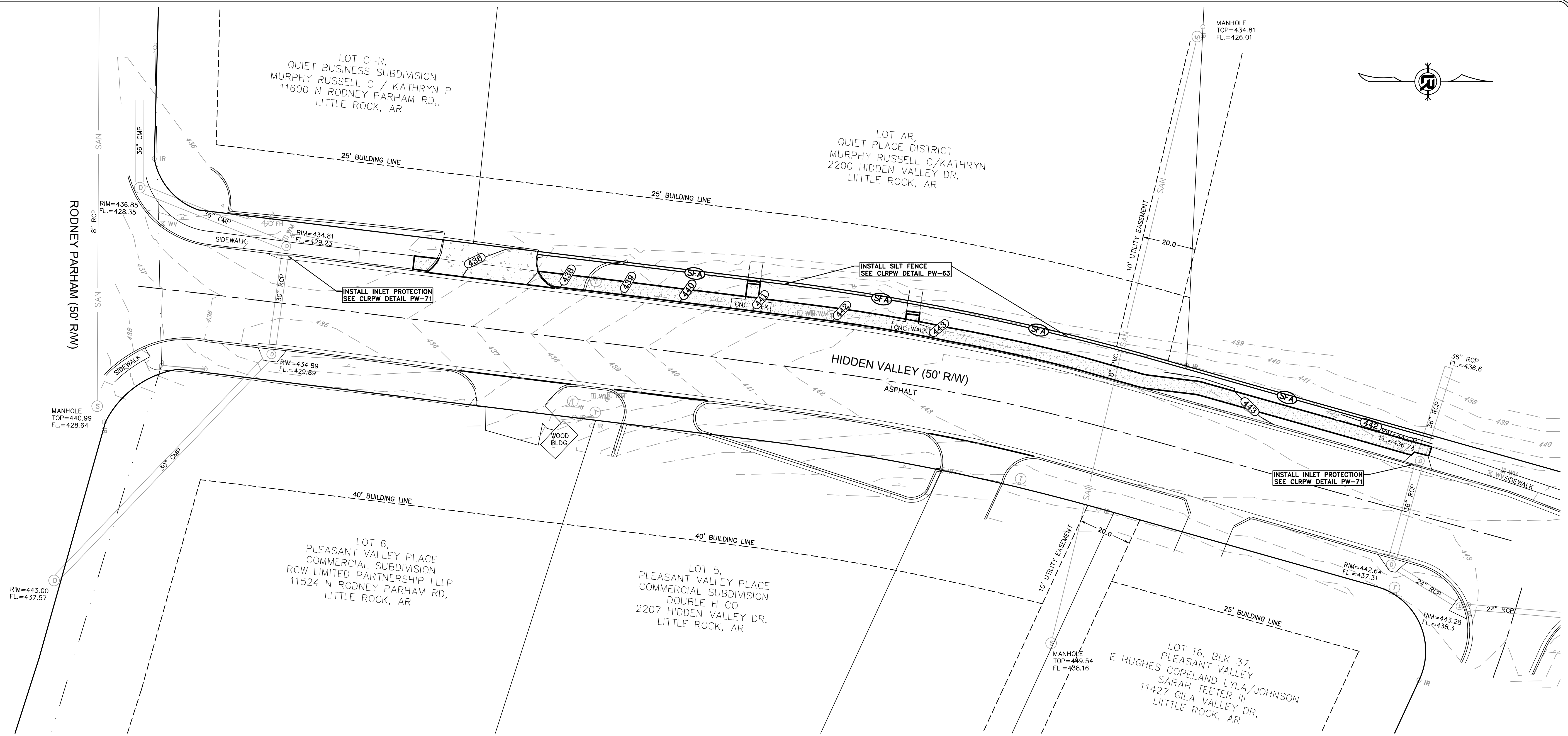


DRAWN BY
JB
DESIGNED
JB
CHECKED
JB
DATE
5/16/24
SCALE
1" = 20'
PROJECT NO.
CLR #04-22-SW-17
SHEET NO.
C-3



100% SUBMITTAL

THOMAS ENGINEERING COMPANY
3810 LOOKOUT ROAD, N. LITTLE ROCK, AR. 72116
TEL: 501-753-4463 FAX: 501-753-6814



REVISIONS	DATE

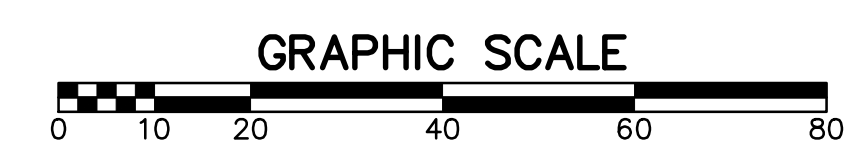
CITY OF LITTLE ROCK, ARKANSAS
HIDDEN VALLEY DRIVE SIDEWALK 04-22-SW-17
EROSION CONTROL PLAN

DEPARTMENT OF PUBLIC WORKS
CIVIL ENGINEERING
701 W. MARKHAM
LITTLE ROCK, ARKANSAS 72201

STATE OF ARKANSAS
REGISTERED PROFESSIONAL ENGINEER
No. 11643
THOMAS R. POWELL

DRAWN BY JB
DESIGNED JB
CHECKED JB
DATE 5/16/24
SCALE 1" = 20'
PROJECT NO. CLR #04-22-SW-17
SHEET NO. C-4

100% SUBMITTAL



THOMAS ENGINEERING COMPANY
3810 LOOKOUT ROAD, N. LITTLE ROCK, AR. 72116
TEL: 501-753-4463 FAX: 501-753-6814