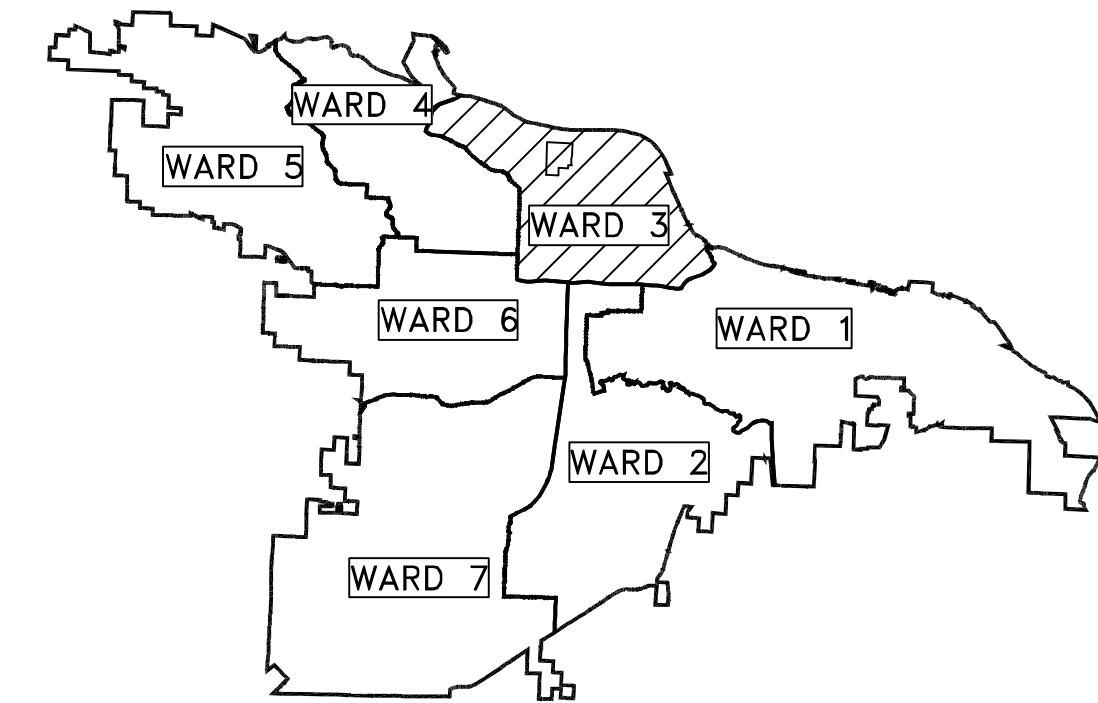


# CLR PROJECT 03-22-DR-037 WARD 3

## KAVANAUGH BLVD AT N. UNIVERSITY AVE. DRAINAGE

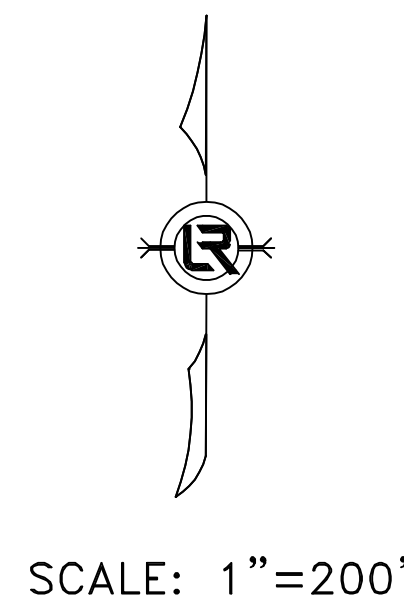
REVISIONS	DATE

CITY OF LITTLE ROCK, ARKANSAS  
WARD 3 03-22-DR-037 KAVANAUGH BLVD AT  
N. UNIVERSITY AVE. DRAINAGE  
COVER SHEET



PROJECT LOCATION – WARD 3  
34°46'13.42"N 92°20'26.08"W  
34.7704–92.3406

SHEET NO.	TITLE
C1	COVER SHEET
C2	LEGEND AND DETAIL SHEET
C3	SITE SURVEY
C4	PLAN AND PROFILE SHEET
C5	EROSION CONTROL PLAN
C6	MAINTENANCE OF TRAFFIC PLAN



**2023-2025  
BOND PROGRAM**

DEPARTMENT OF PUBLIC WORKS  
CIVIL ENGINEERING  
701 WEST MARKHAM STREET  
LITTLE ROCK, ARKANSAS 72201



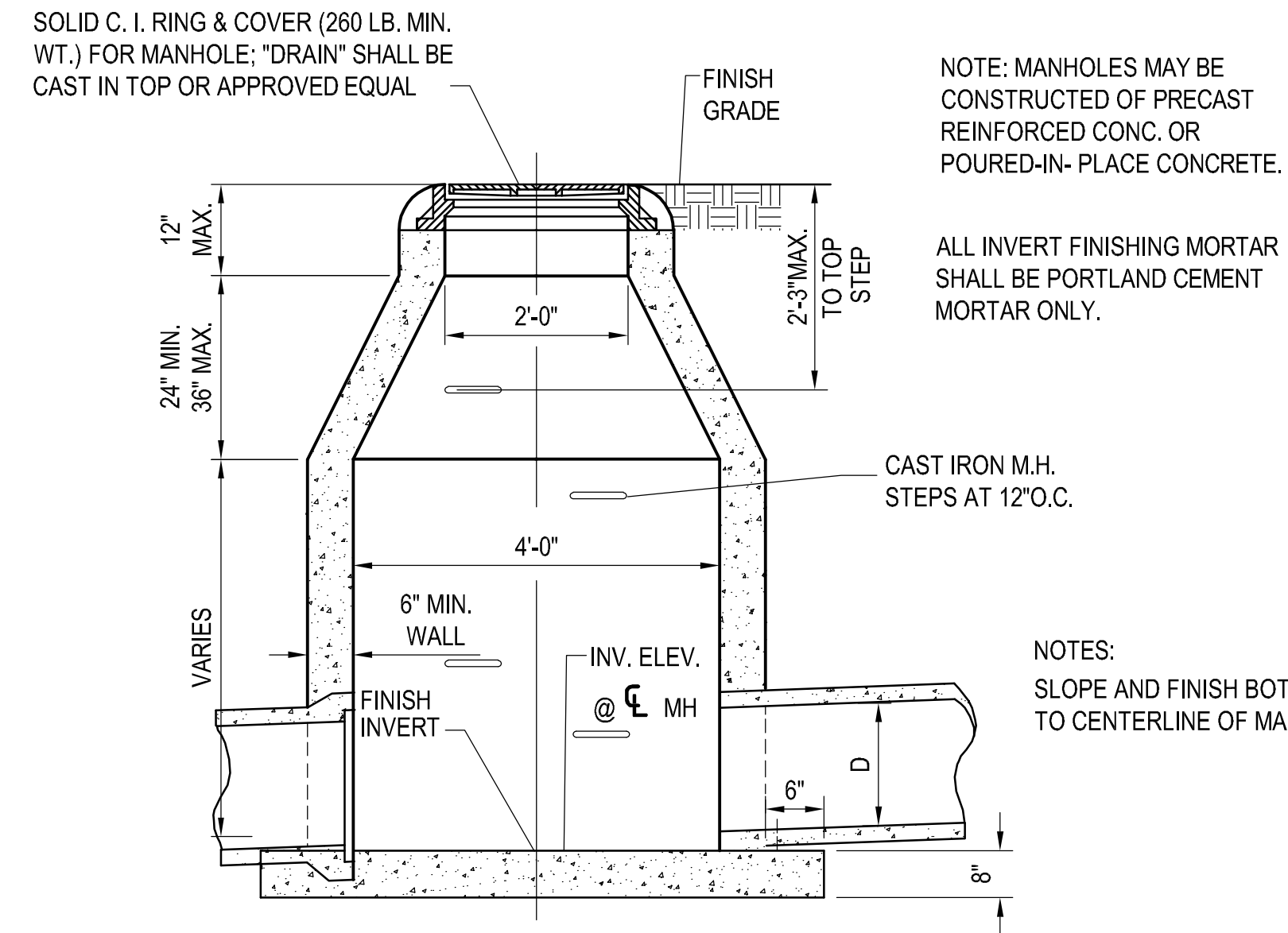
Know what's below.  
Call before you dig.



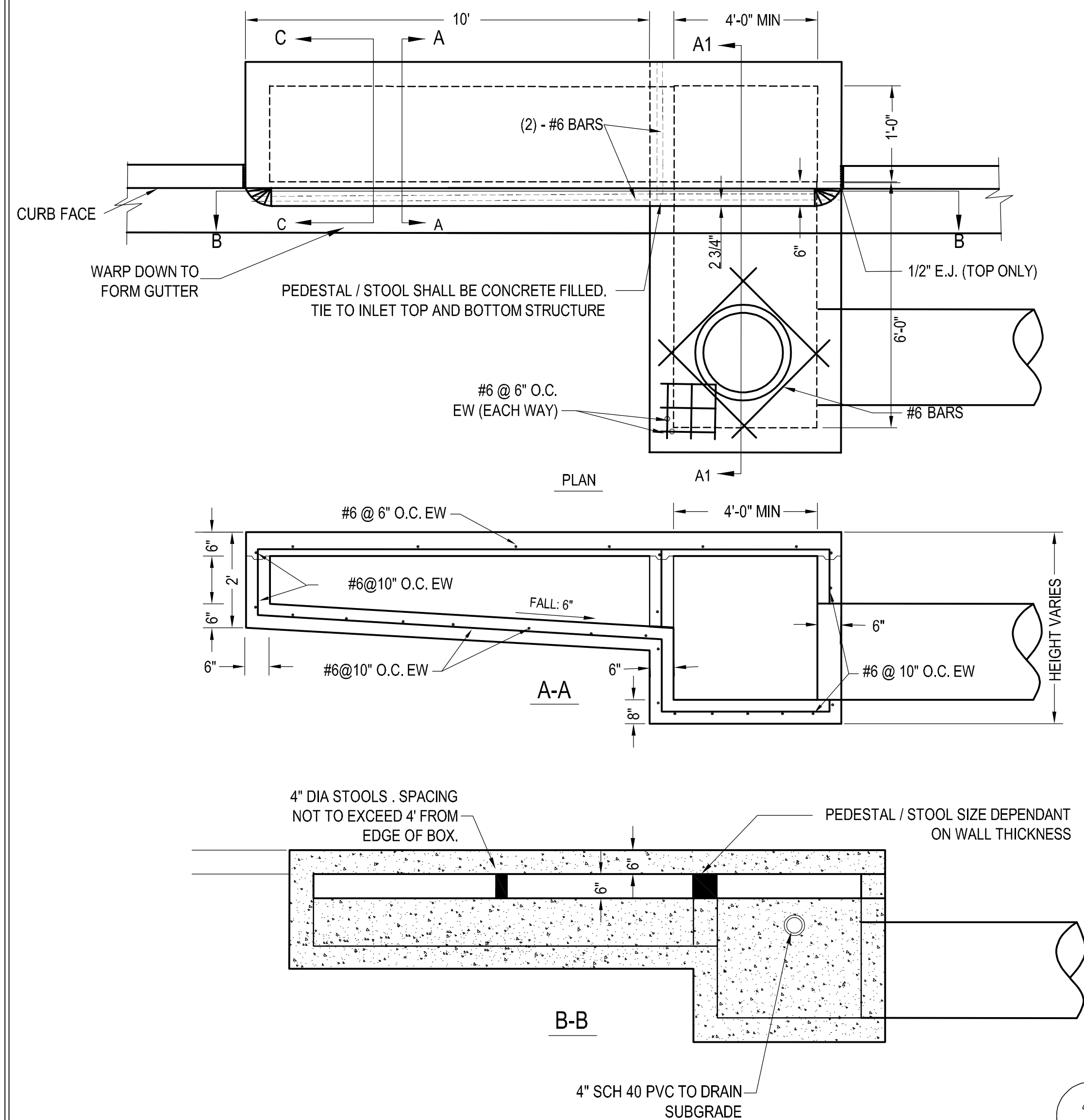
DRAWN BY CGW
DESIGNED CGW
CHECKED MJT
DATE 04-01-2024
SCALE N.T.S.
PROJECT NO. ##
SHEET NO. C1

**CROMWELL**  
1300 east 6th Street little rock, ar 72202  
501.372.2900 cromwell.com

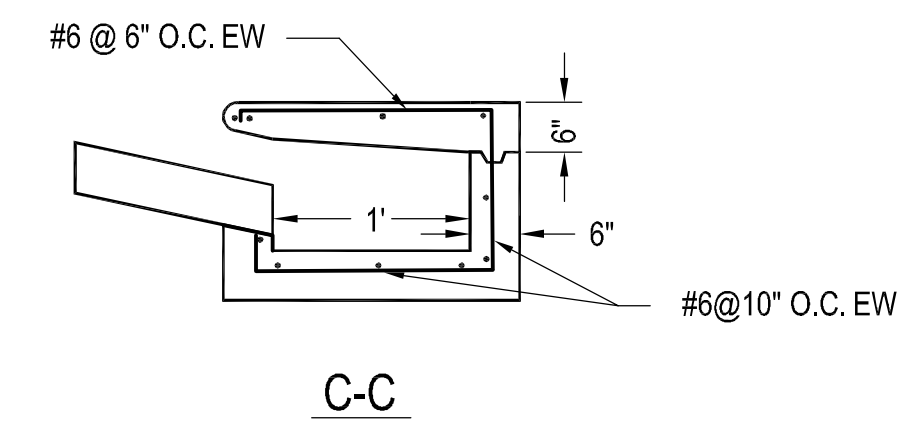
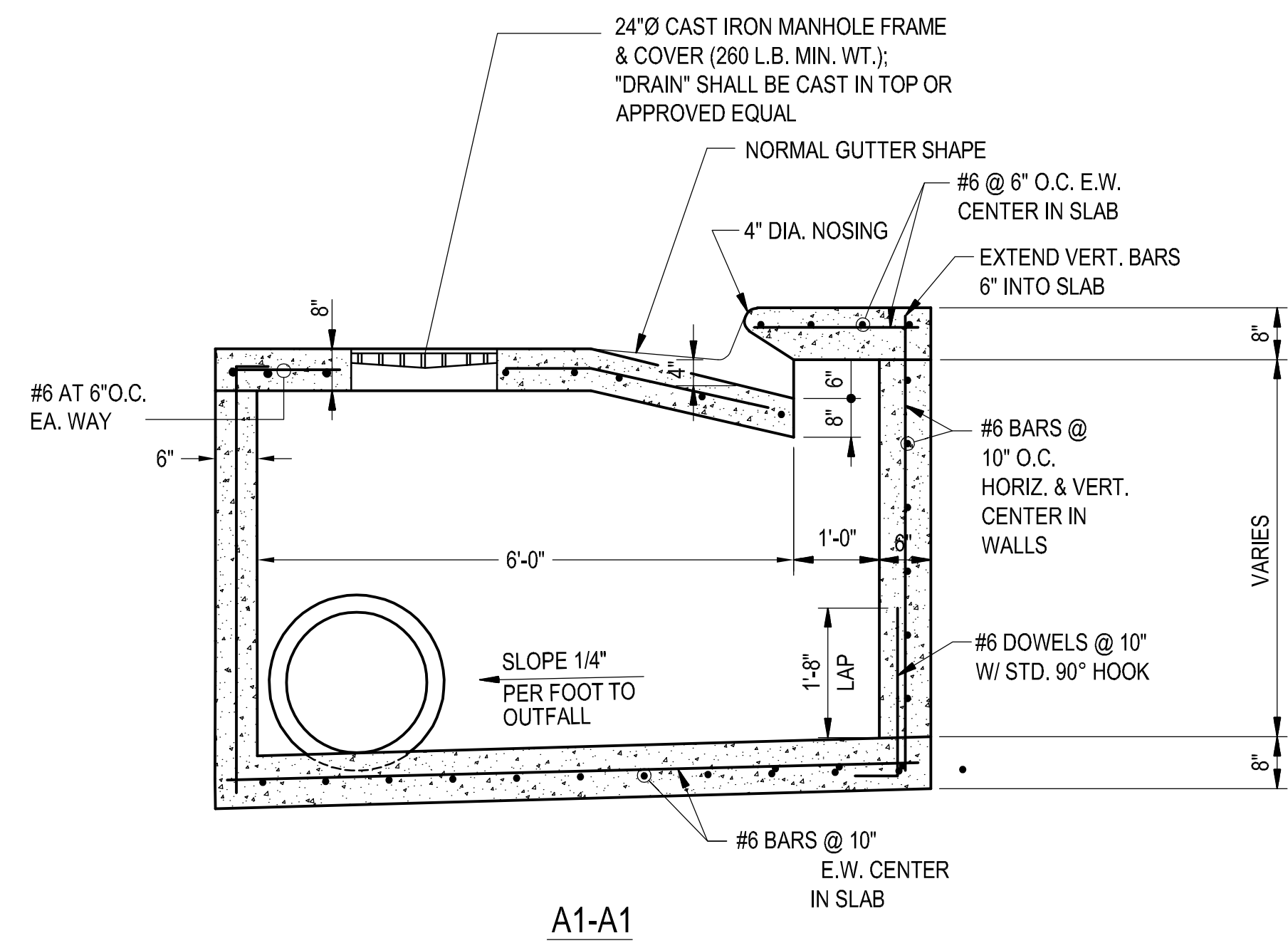
CLR PROJECT #			
WARD 3 KAVANAUGH @ UNIVERSITY			
March 5 2024			
ITEM #	ITEM DESCRIPTION	UNIT	QUANTITY
2.01	SITE PREPARATION	LS	1
4.01	AGGREGATE BASE COURSE	TON	36
6.01	ASPHALT CONCRETE (HOT MIX, BINDER COURSE)	TON	9
6.01	ASPHALT CONCRETE (HOT MIX, SURFACE COURSE)	TON	9
8.01	CONCRETE CURB AND GUTTER (CLASS 3)	LF	33
9.01	CONCRETE SIDEWALK 4" THICK	SF	24
10.02	CURB INLET WING EXTENTION	EA	1
10.02	CURB INLET	EA	1
10.02	JUNCTION BOX	EA	1
13.12C	STORM DRAIN PIPES 12" (CROSS DRAIN)	LF	32
14.02	SOLID SODDING (BERMUDA)	SY	13
16.01	MAINTENANCE OF TRAFFIC	LS	1
19.01	FINAL CLEANUP	LS	1
24.09	SEDIMENT BARRIER, BLOCK (SD4)	LF	42



1 **STORM DRAIN MANHOLE DETAIL**  
NOT TO SCALE



2 **CURB INLET DETAIL**  
NOT TO SCALE



NOTE: ALL REINFORCING TO BE PLACED 1-1/2" CLEAR TO THE INSIDE OF THE STRUCTURE.

REVISIONS	DATE

CITY OF LITTLE ROCK, ARKANSAS  
WARD 3 03-22-DR-037 KAVANAUGH BLVD AT  
N. UNIVERSITY AVE. DRAINAGE  
LEGEND AND DETAIL SHEET

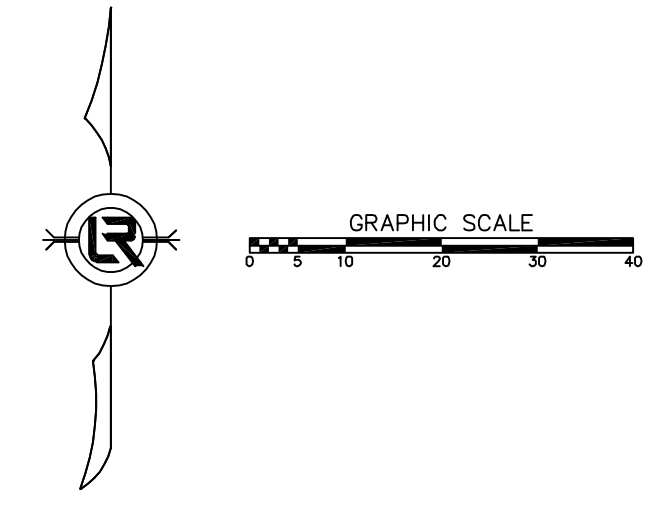
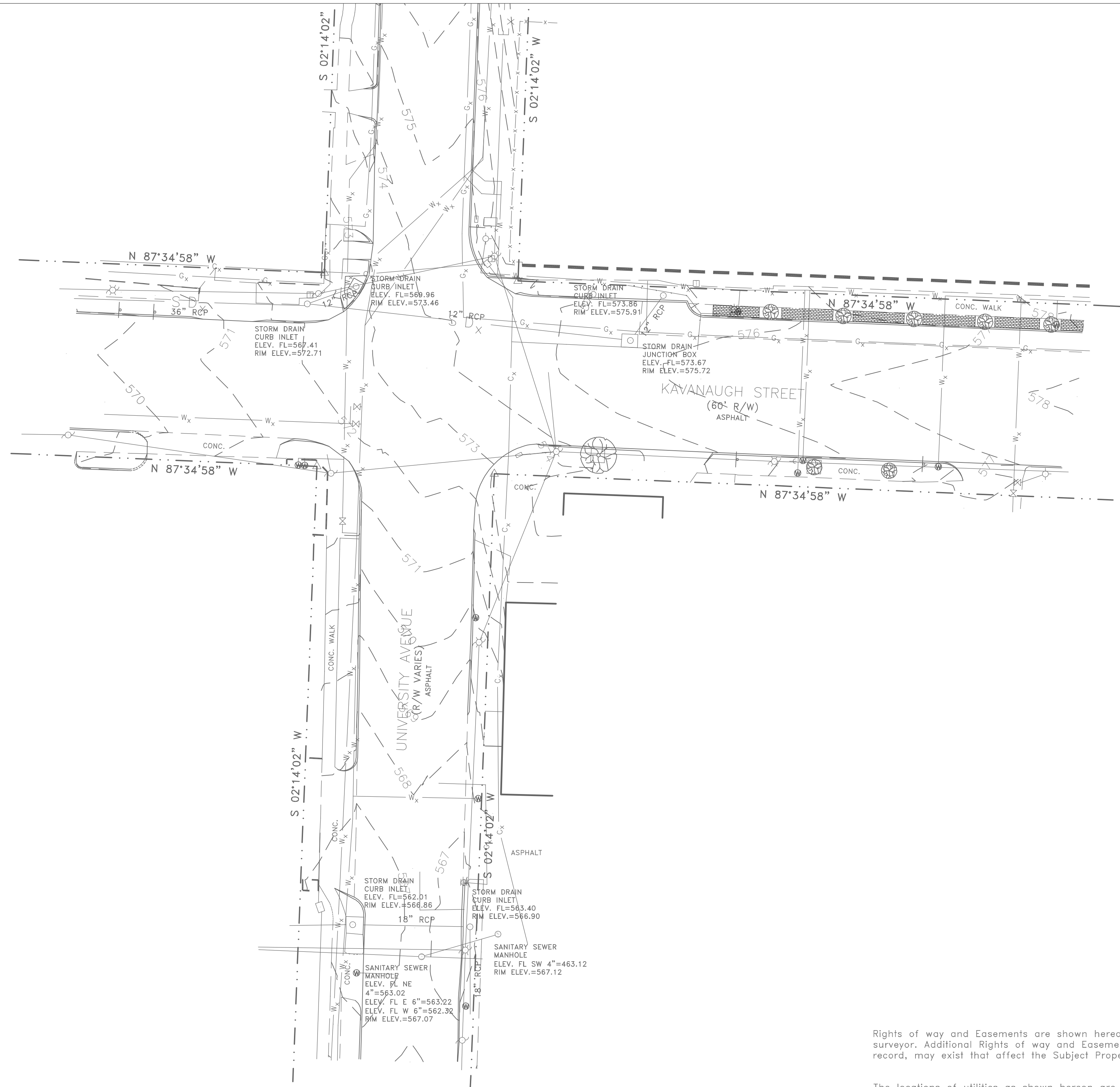
DEPARTMENT OF PUBLIC WORKS  
CIVIL ENGINEERING  
701 W. MARKHAM  
LITTLE ROCK, ARKANSAS 72201

STATE OF ARKANSAS  
REGISTERED PROFESSIONAL ENGINEER  
CHARLES WISE  
No. 15927  
04-01-2024

**DRAWN BY**  
CGW  
**DESIGNED**  
CGW  
**CHECKED**  
MJT  
**DATE**  
04-01-2024  
**SCALE**  
N.T.S.  
**PROJECT NO.**  
CLR #17201  
**SHEET NO.**  
C2

REVISIONS	DATE

CITY OF LITTLE ROCK, ARKANSAS  
 WARD 3 03-22-DR-037 KAVANAUGH BLVD AT  
 N. UNIVERSITY AVE. DRAINAGE  
 SURVEY SHEET



LEGEND	
●	FOUND MONUMENT
○	SET 1/2" REBAR
△	COMPUTED POINT
⊕	FIRE HYDRANT
⊗	WATER VALVE
⊙	WATER METER
⊛	GAS METER
⊞	GAS VALVE
⊚	POWER POLE
⊛	POWER POLE W/ LIGHT
⊠	GUY WIRE
⊙	LIGHT POLE
⊞	TELEPHONE PEDESTAL
⊞	ELECTRIC METER
○	SANITARY SEWER MANHOLE
■	SIGN
(M)	MEASURED
(R)	RECORD
—	WATER LINE
—G—	GAS LINE
—O—	OVERHEAD ELECTRIC
—U—	UNDERGROUND TELEPHONE
—E—	UNDERGROUND ELECTRIC

Rights of way and Easements are shown hereon as per documents provided to the surveyor. Additional Rights of way and Easements, recorded or not a part of the public record, may exist that affect the Subject Property.

The locations of utilities as shown hereon are based on aboveground structures and record documents. Locations of underground utilities may vary from locations shown hereon. Additional buried utilities/structures may be encountered. No excavations were made during the progress of the survey to locate buried utilities/structures.

Based on scaled map location and graphic plotting only, the property shown hereon is in Flood Zone X, which is not in the designated 100 Year Floodplain according to Flood Insurance Rate Map, Pulaski County, Arkansas and Incorporated Areas, Community Panel Number 05119C0339J, Map Revised February 26, 2001.

Vertical Datum is based on NAVD88 (GEOID18) as per GPS observation.

Bearings are based on Grid North NAD83 (2011), State Plane Coordinates Arkansas North Zone (301) as per GPS observation.

DEPARTMENT OF PUBLIC WORKS  
 CIVIL ENGINEERING  
 701 W. MARKHAM  
 LITTLE ROCK, ARKANSAS 72201

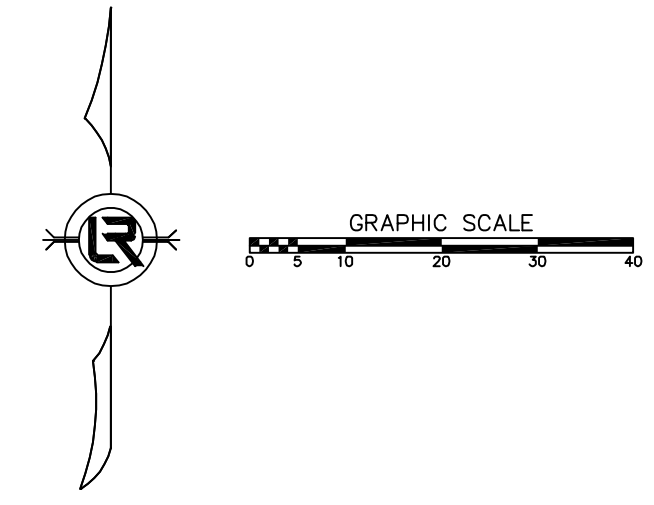
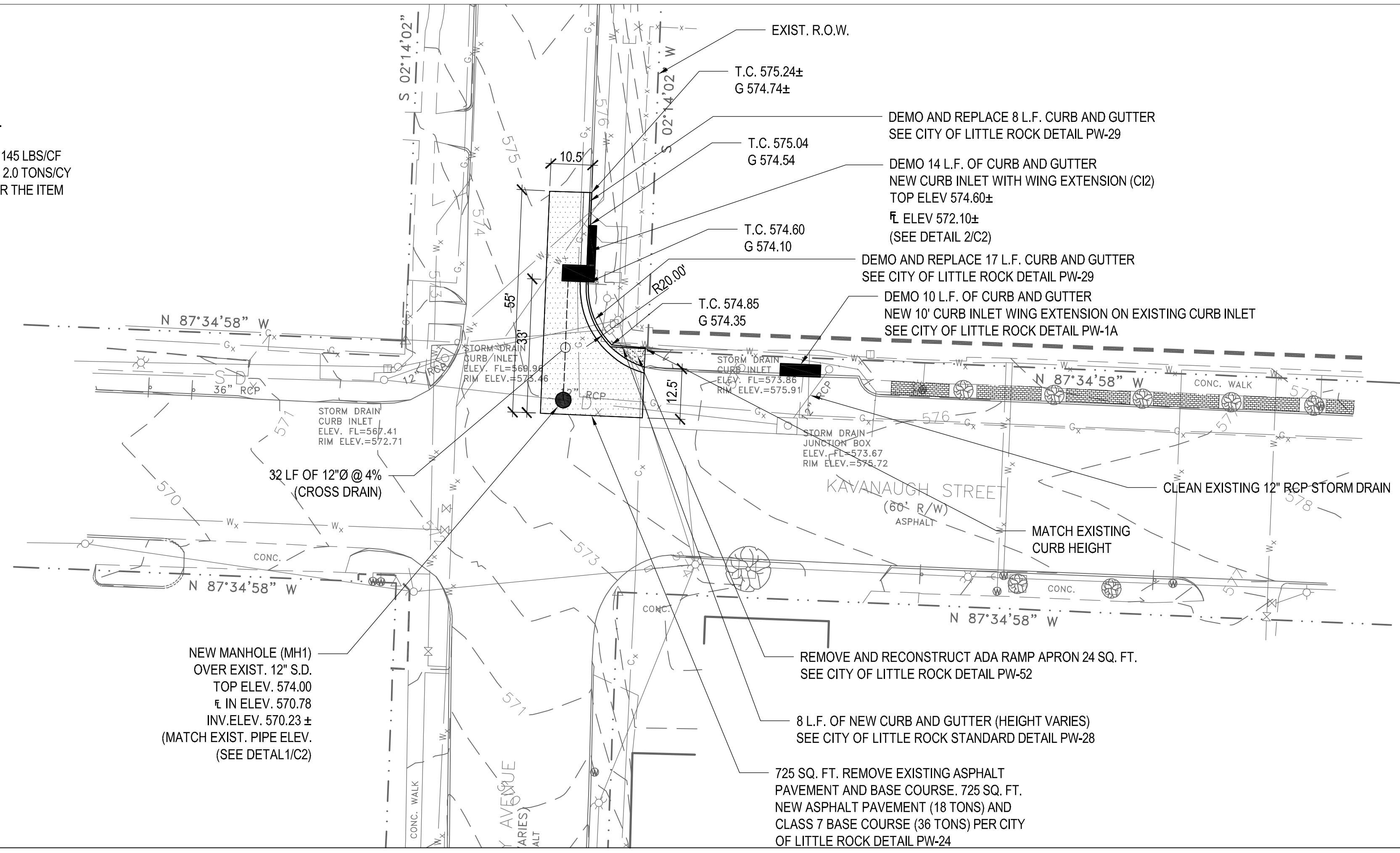
STATE OF ARKANSAS  
 REGISTERED PROFESSIONAL ENGINEER  
 CHARLES WISE  
 No. 15927  
 04-01-2024

<b>DRAWN BY</b> CGW
<b>DESIGNED</b> CGW
<b>CHECKED</b> MJT
<b>DATE</b> 04-01-2024
<b>SCALE</b> 20 SCALE
<b>PROJECT NO.</b> CLR #17201
<b>SHEET NO.</b> C3

REVISIONS	DATE

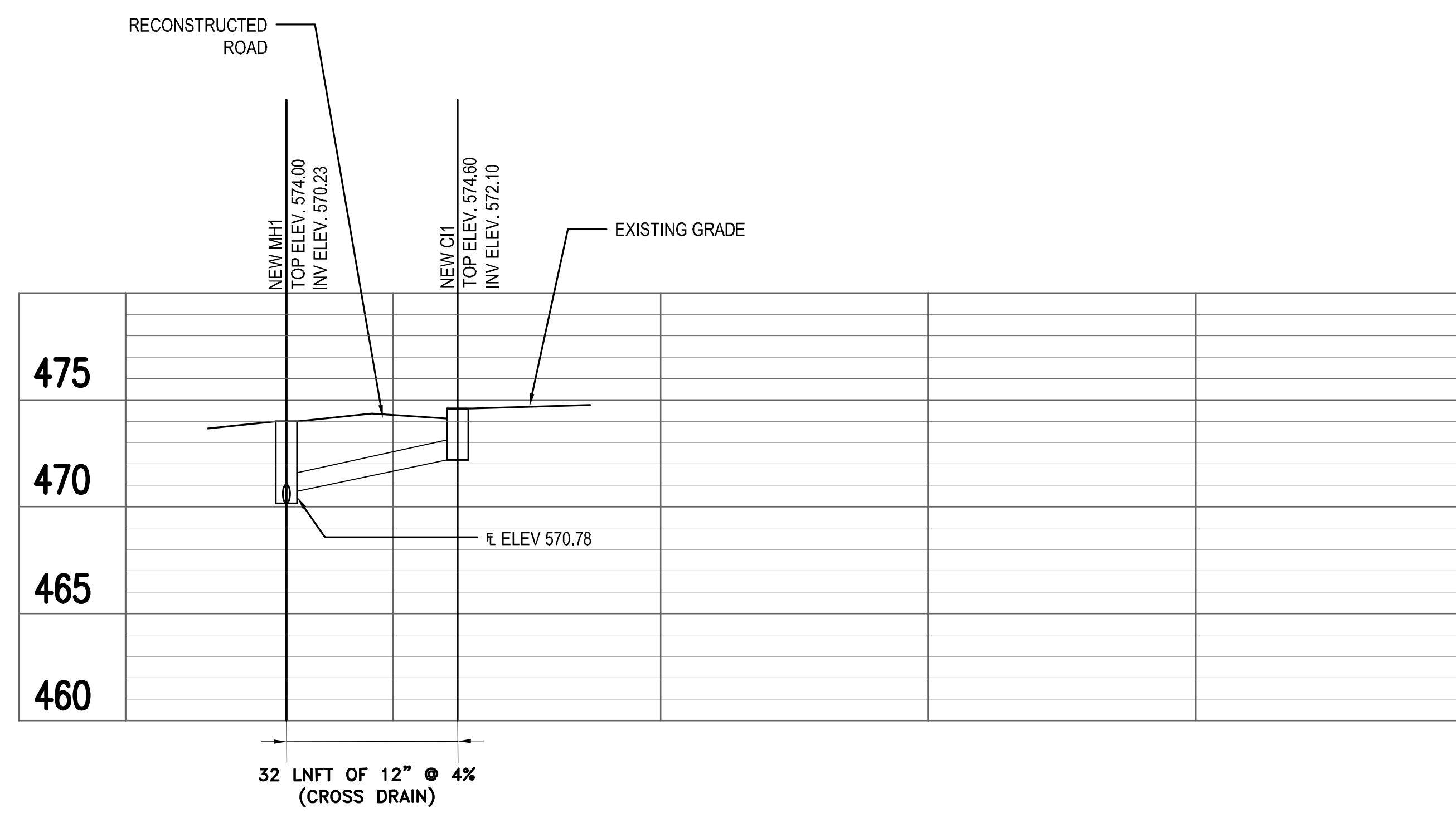
NOTE:

1. SAW CUT ALL IMPROVEMENTS AT REMOVAL LINES.
2. BID QUANTITIES ARE SHOWN IN BRACKETS (## CY)
3. ASPHALT QUANTITIES CALCULATED AS APPROX. 145 LBS/CF
4. CLASS 7 BASE COURSE CALCULATED AS APPROX. 2.0 TONS/CY
5. ALL DEMOLITION WORK SHALL BE PAID FOR UNDER THE ITEM "SITE PREPARATION."

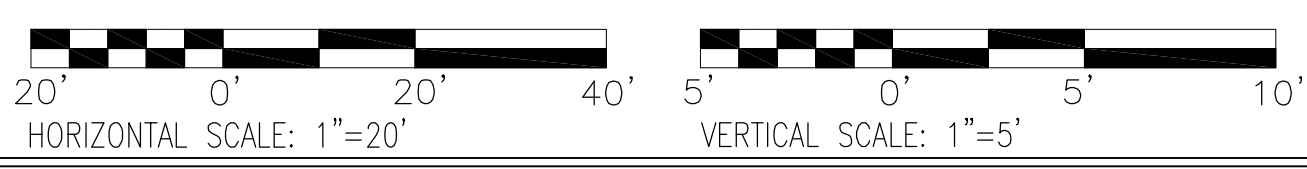


NOTE:

1. SAW CUT ALL IMPROVEMENTS AT REMOVAL LINES.

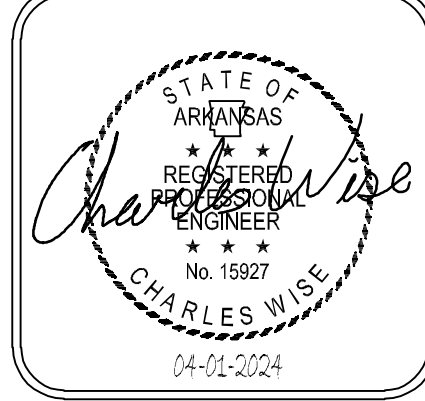


**NEW STORM DRAIN PROFILE**

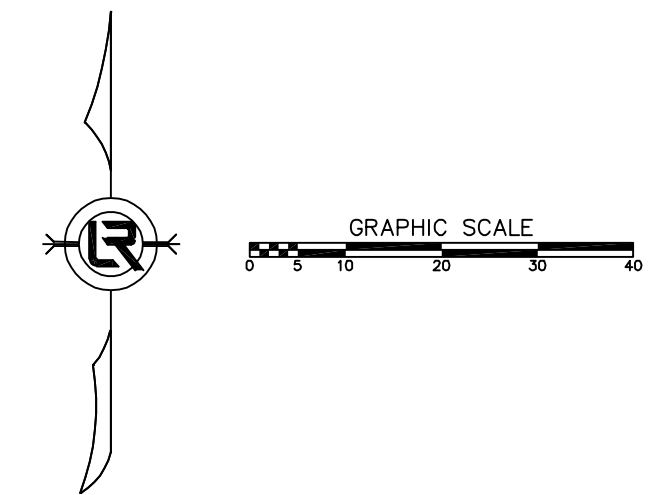
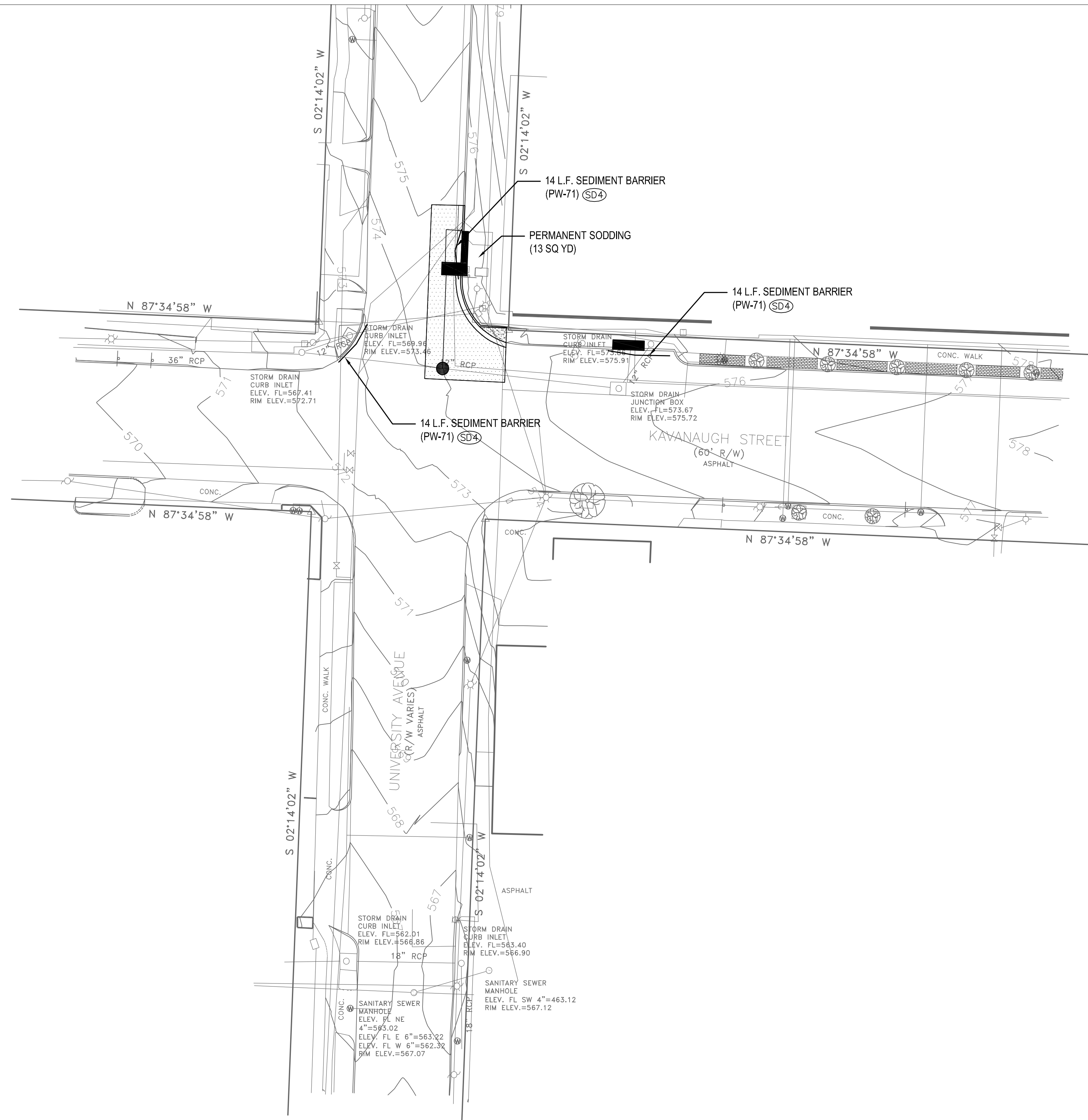


CITY OF LITTLE ROCK, ARKANSAS  
 WARD 3 03-22-DR-037 KAVANAUGH BLVD AT  
 N. UNIVERSITY AVE. DRAINAGE  
 PLAN AND PROFILE SHEET

DEPARTMENT OF PUBLIC WORKS  
 CIVIL ENGINEERING  
 701 W. MARKHAM  
 LITTLE ROCK, ARKANSAS 72201



DRAWN BY  
 CGW  
 DESIGNED  
 CGW  
 CHECKED  
 MJT  
 DATE  
 04-01-2024  
 SCALE  
 20 SCALE  
 PROJECT NO.  
 CLR #17201  
 SHEET NO.  
 C4



REVISIONS	DATE

CITY OF LITTLE ROCK, ARKANSAS  
 WARD 3 03-22-DR-037 KAVANAUGH BLVD AT  
 N. UNIVERSITY AVE. DRAINAGE  
 EROSION CONTROL PLAN

DEPARTMENT OF PUBLIC WORKS  
 CIVIL ENGINEERING  
 701 W. MARKHAM  
 LITTLE ROCK, ARKANSAS 72201


STATE OF ARKANSAS  
 REGISTERED PROFESSIONAL ENGINEER  
 CHARLES WISE  
 No. 15927  
 04-01-2024

DRAWN BY CGW
DESIGNED CGW
CHECKED MJT
DATE 04-01-2024
SCALE 20 SCALE
PROJECT NO. CLR #17201
SHEET NO. C5

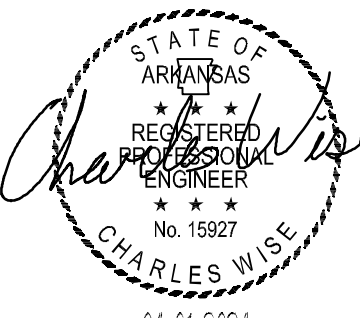
REVISIONS	DATE

CITY OF LITTLE ROCK, ARKANSAS  
 WARD 3 03-22-DR-037 KAVANAUGH BLVD AT  
 N. UNIVERSITY AVE. DRAINAGE  
 MAINTENANCE OF TRAFFIC PLAN

DEPARTMENT OF PUBLIC WORKS  
 CIVIL ENGINEERING  
 701 W. MARKHAM  
 LITTLE ROCK, ARKANSAS 72201



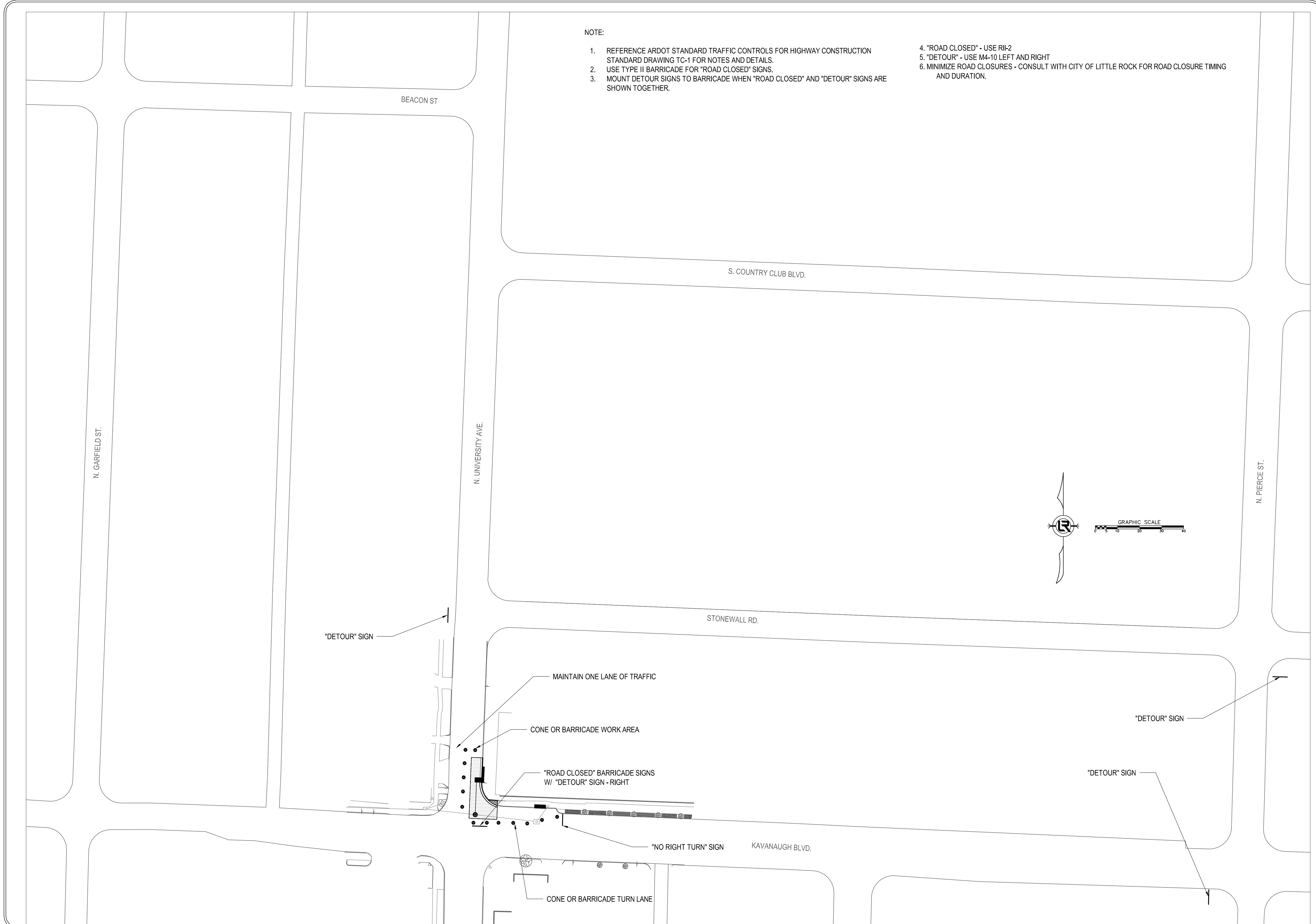
STATE OF ARKANSAS  
 REGISTERED PROFESSIONAL ENGINEER  
 CHARLES WISE  
 No. 15927  
 04-01-2024



DRAWN BY  
 CGW  
 DESIGNED  
 CGW  
 CHECKED  
 MJT  
 DATE  
 04-01-2024  
 SCALE  
 20 SCALE  
 PROJECT NO.  
 CLR #17201  
 SHEET NO.  
 C6

NOTE:

1. REFERENCE ARDOT STANDARD TRAFFIC CONTROLS FOR HIGHWAY CONSTRUCTION STANDARD DRAWING TC-1 FOR NOTES AND DETAILS.
2. USE TYPE III BARRICADE FOR "ROAD CLOSED" SIGNS.
3. MOUNT DETOUR SIGNS TO BARRICADE WHEN "ROAD CLOSED" AND "DETOUR" SIGNS ARE SHOWN TOGETHER.
4. "ROAD CLOSED" - USE RII-2
5. "DETOUR" - USE M4-10 LEFT AND RIGHT
6. MINIMIZE ROAD CLOSURES - CONSULT WITH CITY OF LITTLE ROCK FOR ROAD CLOSURE TIMING AND DURATION.



"DETOUR" SIGN

MAINTAIN ONE LANE OF TRAFFIC

CONE OR BARRICADE WORK AREA

"ROAD CLOSED" BARRICADE SIGNS  
 W/ "DETOUR" SIGN - RIGHT

"NO RIGHT TURN" SIGN

CONE OR BARRICADE TURN LANE

"DETOUR" SIGN

"DETOUR" SIGN