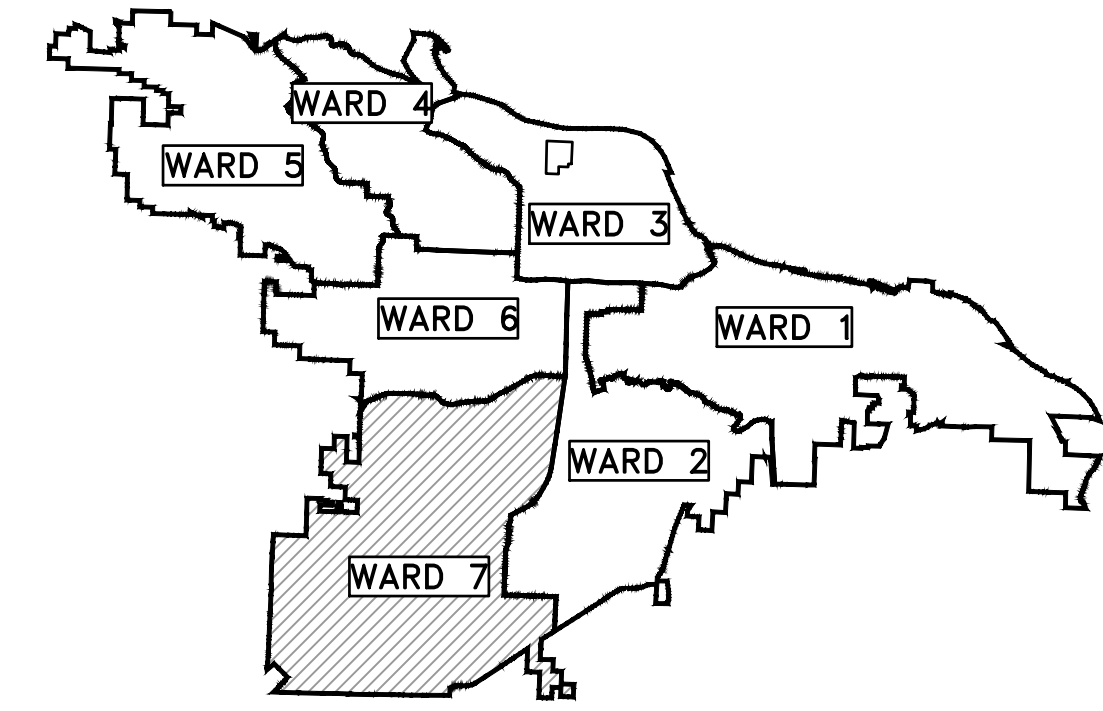


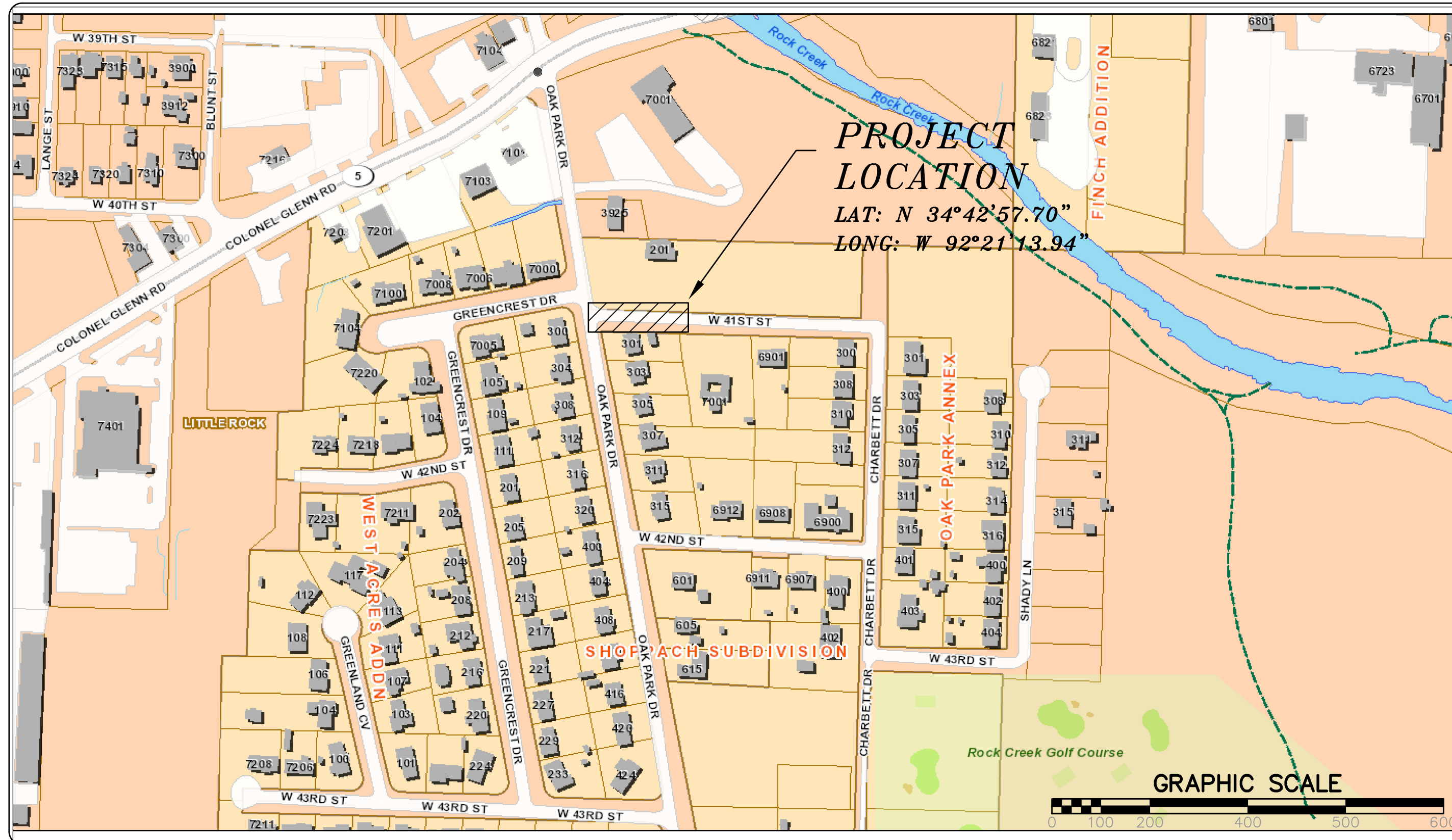
CLR PROJECT # 7-18-DR-241

W. 41st STREET DRAINAGE

LITTLE ROCK, ARKANSAS



PROJECT LOCATION – WARD 7



SHEET NO.	TITLE
C1	COVER SHEET
C2	GENERAL NOTES, LEGEND, AND QUANTITIES
C3	EXISTING CONDITIONS
C4	ROADWAY PLAN AND PROFILE
C5	DRAINAGE PLAN AND PROFILE
C6	EROSION CONTROL PLAN
C7	MAINTENANCE OF TRAFFIC PLAN



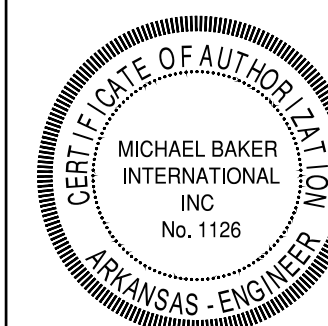
DEPARTMENT OF PUBLIC WORKS
 CIVIL ENGINEERING
 701 WEST MARKHAM STREET
 LITTLE ROCK, ARKANSAS 72201



Know what's below.
 Call before you dig.

Michael Baker
INTERNATIONAL

101 S. Spring St., Suite 100
 Little Rock, AR 72201
 501-907-6223



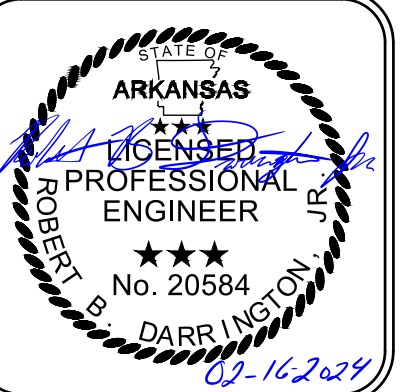
REVISIONS DATE

REVISIONS	DATE

CITY OF LITTLE ROCK, ARKANSAS
 7-18-DR-241 W. 41st STREET DRAINAGE

COVER SHEET

DEPARTMENT OF PUBLIC WORKS
 CIVIL ENGINEERING
 701 W. MARKHAM
 LITTLE ROCK, ARKANSAS 72201

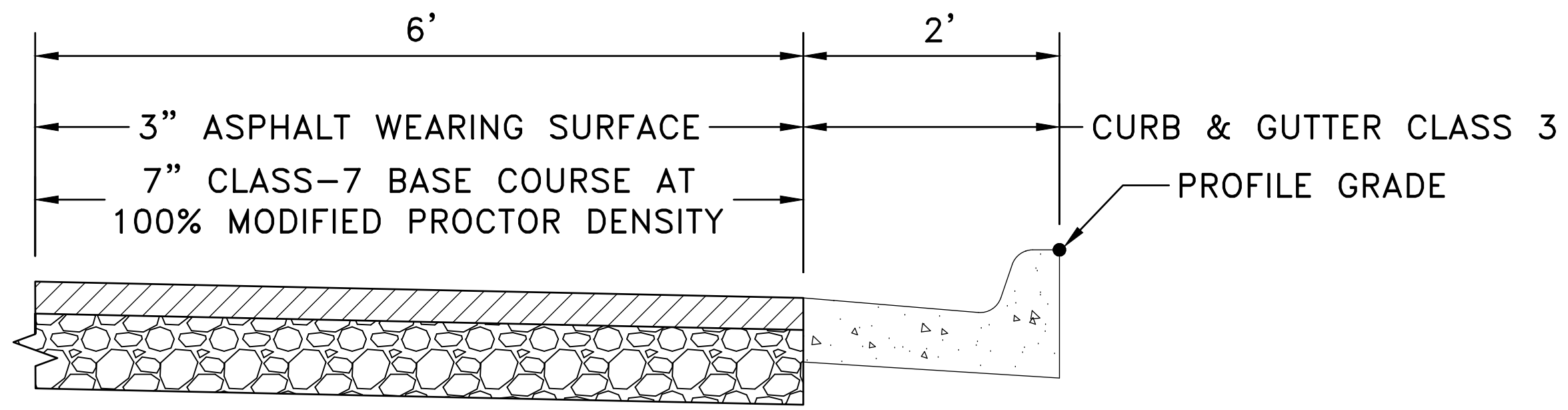


DRAWN BY
 ASC
 DESIGNED
 ASC
 CHECKED
 RBD
 DATE
 JANUARY, 2024
 SCALE
 1" = 200'
 PROJECT NO.
 CLR # 7-18-DR-241
 SHEET NO.
 C1

REVISIONS	DATE

CLR PROJECT #07-18-DR-241			
ITEM #	ITEM DESCRIPTION	UNIT	QUANTITY
2.01	Site Preparation	LS	1
4.01	Aggregate Base Course	TON	49
6.01	ACHM Surface Course	TON	20
7.06	Concrete Driveway (6" Thick), Standard Finish	SF	100
8.03	Concrete Curb and Gutter (Class 3)	LF	200
10.04	Curb Inlet - 4' Box	EA	2
10.07	Wing 3' Extension	EA	2
13.24C	Storm Drain Pipe, 24" (Cross Drain)	LF	29
13.24S	Storm Drain Pipe, 24" (Side Drain)	LF	153
13.61	Tie Into Existing Junction Box	EA	1
14.01	Solid Sodding, Bermuda (Includes 4" of Topsoil)	SY	45
16.01	Maintenance of Traffic	LS	1
17.01	Pavement Repairs	SY	14
19.01	Final Cleanup	LS	1
24.09	Sediment Barrier - Block	EA	2
SP	As-Built Survey	LS	1

EXISTING	PROPOSED
IRON ROD	PROPOSED CONTOUR
PK NAIL	PROPOSED SPOT ELEVATION
R.R. SPIKE	PROPOSED SPOT CURB ELEVATION
CONC. MONUMENT	STORM SEWER - PIPE
WATER VALVE	STORM SEWER - MITERED END SECTION
WATER METER	STORM SEWER - GRATE INLET
FIRE HYDRANT	STORM SEWER - JUNCTION BOX
GAS METER	STORM SEWER - FLARED END SECTION
GAS VALVE	STORM SEWER - HEADWALL
CLEAN-OUT	STORM SEWER - SINGLE WING
GUARD POST (BOLLARD)	STORM SEWER - DOUBLE WING
SIGN POST	STORM SEWER - AREA INLET
BENCHMARK	GRADE BREAK LINE
STORM SEWER MANHOLE	HIGH POINT
SANITARY SEWER MANHOLE	LOW POINT
TELEPHONE MANHOLE	CUT LINE
ELECTRIC MANHOLE	FILL LINE
TELEPHONE BOX	SANITARY SEWER PIPE
ELECTRIC BOX	SANITARY SEWER MANHOLE
CABLE BOX	PROPOSED CURB
UTILITY POLE	PROPOSED CONCRETE
GUY WIRE	PROPOSED ASPHALT
LIGHT POLE	CONSTRUCTION - ENTRANCE/EXIT
POST OR POLE (TYPE AS NOTED)	CHECK DAM
MAILBOX	DIVERSION BERM
DECIDUOUS TREE	DOWNDRAIN STRUCTURE - TEMPORARY
BUSH	ROCK DAM
PROPERTY LINE	SEDIMENT BARRIER - SILT FENCE
SETBACK LINE	SEDIMENT BARRIER - GRAVEL RING
EASEMENT LINE	SEDIMENT BARRIER - BLOCK & GRAVEL
CURB	SEDIMENT BARRIER - BLOCK
FENCE	TEMPORARY SEDIMENT BASIN
OVERHEAD ELECTRIC	SILT FENCE - TYPE A
OVERHEAD TELEPHONE	SILT FENCE - TYPE B
OVERHEAD CABLE	SILT FENCE - TYPE C
UNDERGROUND TELEPHONE	STORM DRAIN OUTLET PROTECTION
UNDERGROUND ELECTRIC	SURFACE ROUGHENING
UNDERGROUND CABLE	DISTURBED AREA STABILIZATION -TEMPORARY STABILIZATION
WATER LINE	DISTURBED AREA STABILIZATION -TEMPORARY GRASSING
SEWER LINE	DISTURBED AREA STABILIZATION -PERMANENT GRASSING
GAS LINE	MATTING/BLANKETS
STORM SEWER/CULVERT	
EDGE OF WOODS	
CONTOUR LINE	



TYPICAL SECTION - W. 41st STREET

CITY OF LITTLE ROCK, ARKANSAS
 7-18-DR-241 W. 41st STREET DRAINAGE
 GENERAL NOTES, LEGEND, AND QUANTITIES

DEPARTMENT OF PUBLIC WORKS
 CIVIL ENGINEERING
 701 W. MARKHAM
 LITTLE ROCK, ARKANSAS 72201



DRAWN BY
 ASC
 DESIGNED
 ASC
 CHECKED
 RBD
 DATE
 JANUARY, 2024
 SCALE
 NONE
 PROJECT NO.
 CLR # 7-18-DR-241
 SHEET NO.
 C2

CONTROL TABLE				
POINT #	NORTHING	EASTING	ELEVATION	DESCRIPTION
1	139493.2700	1205887.8150	280.3230	60D
2	139464.5020	1206263.8090	294.5760	60D

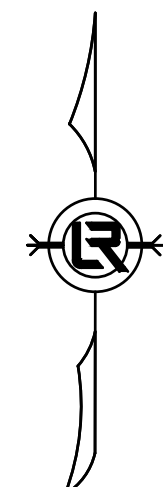
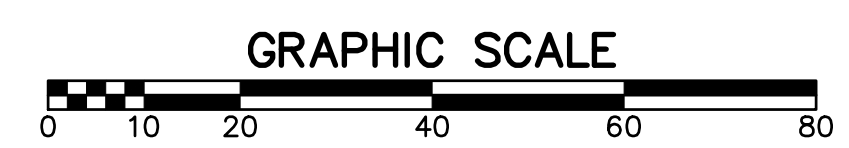
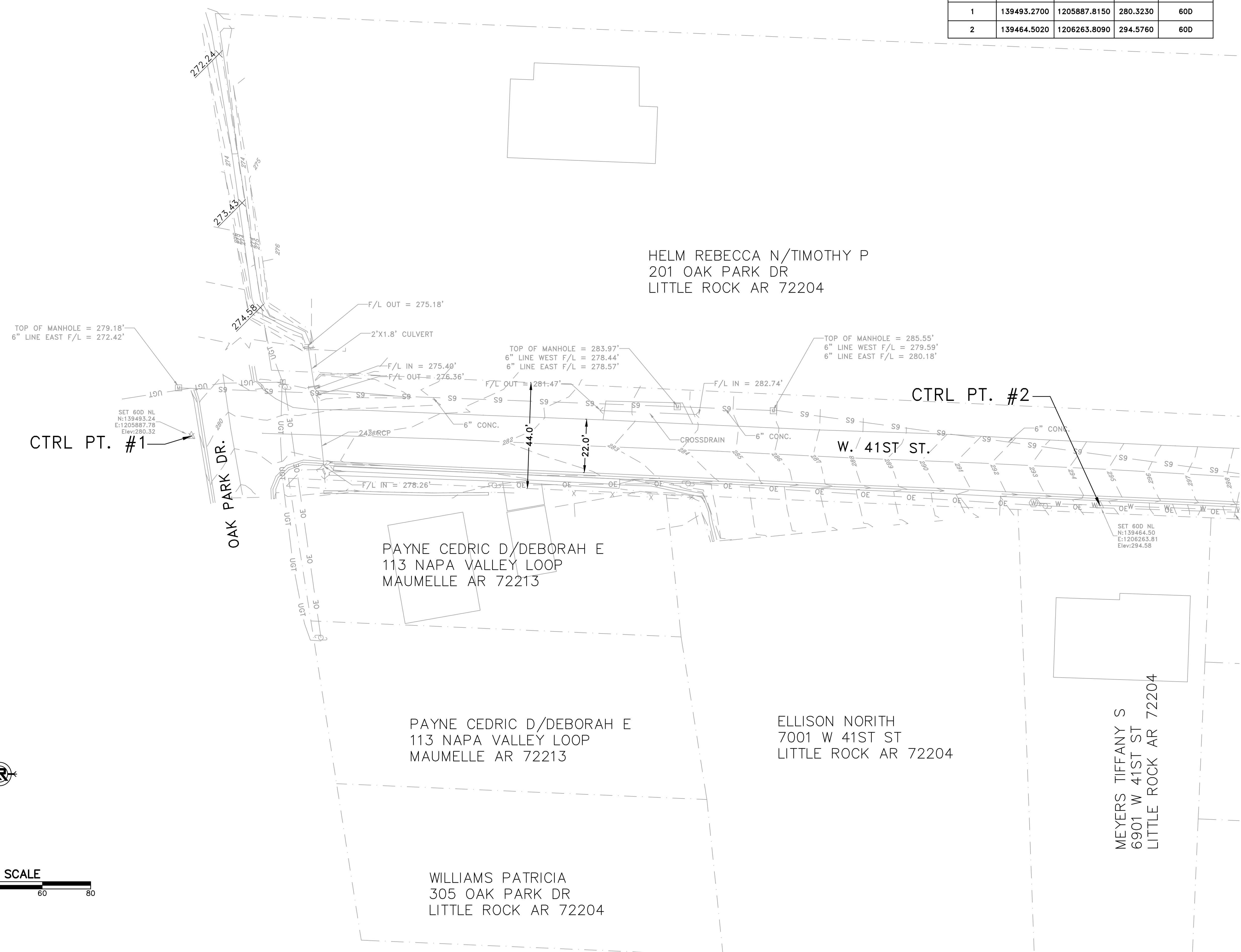
REVISIONS	DATE

CITY OF LITTLE ROCK, ARKANSAS
 7-18-DR-241 W. 41st STREET DRAINAGE
 EXISTING CONDITIONS

DEPARTMENT OF PUBLIC WORKS
 CIVIL ENGINEERING
 701 W. MARKHAM
 LITTLE ROCK, ARKANSAS 72201

STATE OF ARKANSAS
 LICENSED PROFESSIONAL ENGINEER
 No. 20584
 DARRINGTON, JR.
 02/16/2024

DRAWN BY
 ASC
 DESIGNED
 ASC
 CHECKED
 RBD
 DATE
 JANUARY, 2024
 SCALE
 1"=20'
 PROJECT NO.
 CLR # 7-18-DR-241
 SHEET NO.
 C3



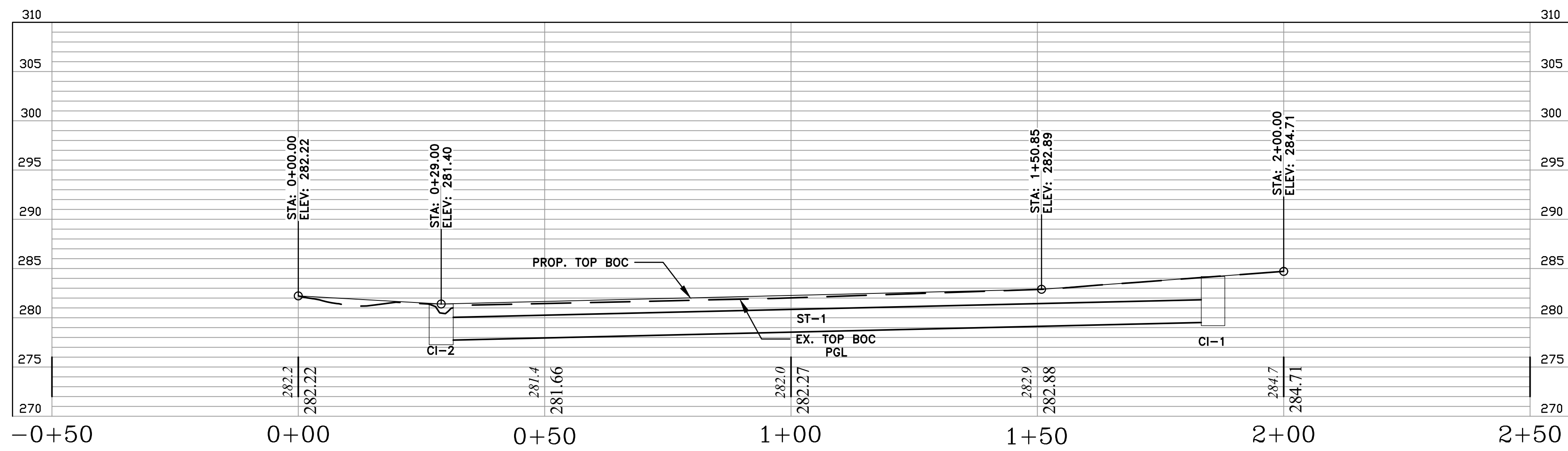
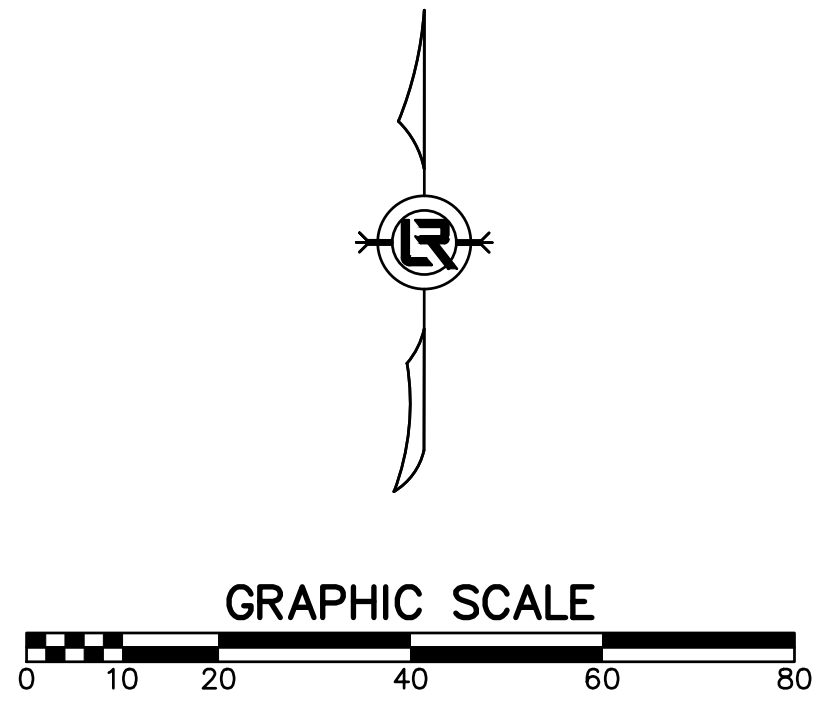
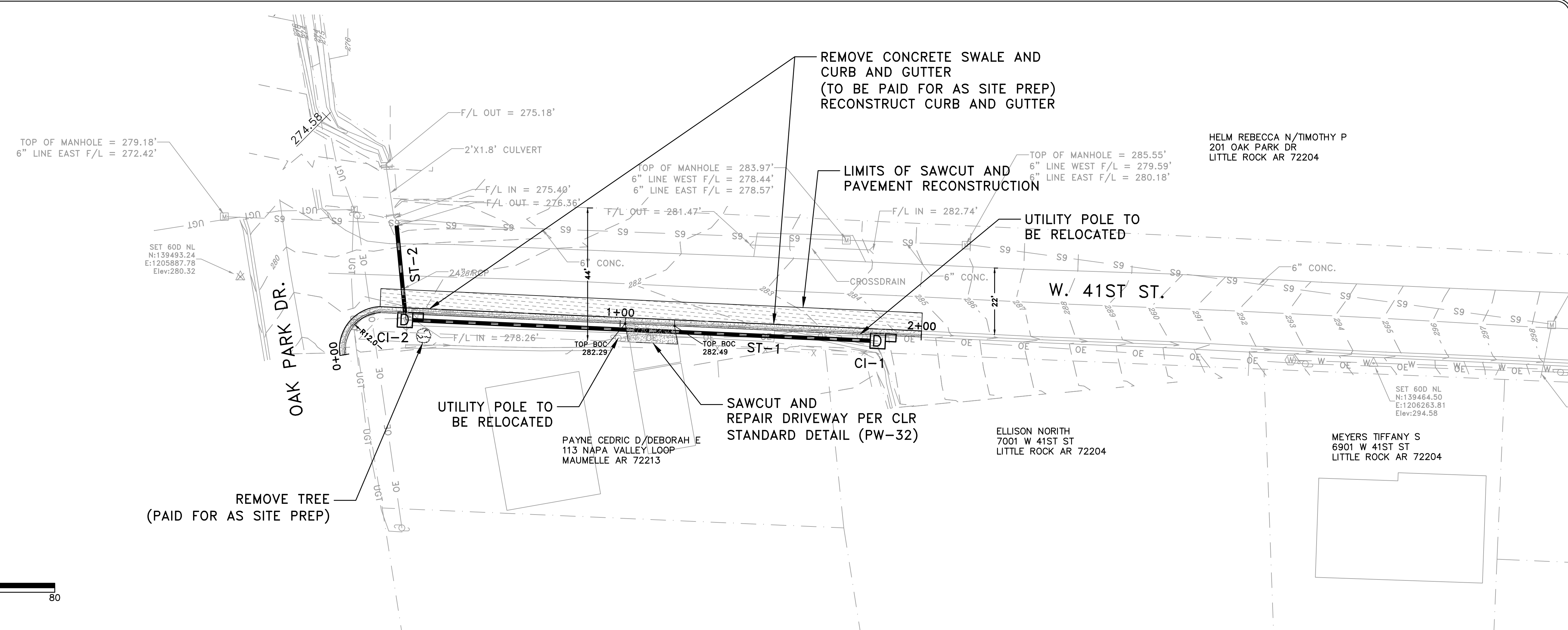
REVISIONS	DATE

CITY OF LITTLE ROCK, ARKANSAS
7-18-DR-241 W. 41st STREET DRAINAGE
 ROADWAY PLAN AND PROFILE

DEPARTMENT OF PUBLIC WORKS
 CIVIL ENGINEERING
 701 W. MARKHAM
 LITTLE ROCK, ARKANSAS 72201



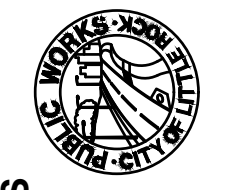
DRAWN BY
 ASC
 DESIGNED
 ASC
 CHECKED
 RBD
 DATE
 JANUARY, 2024
 SCALE
 1"=20'
 PROJECT NO.
 CLR # 7-18-DR-241
 SHEET NO.
C4



W. 41st STREET DRAINAGE
 C&G RECONSTRUCTION - PROFILE

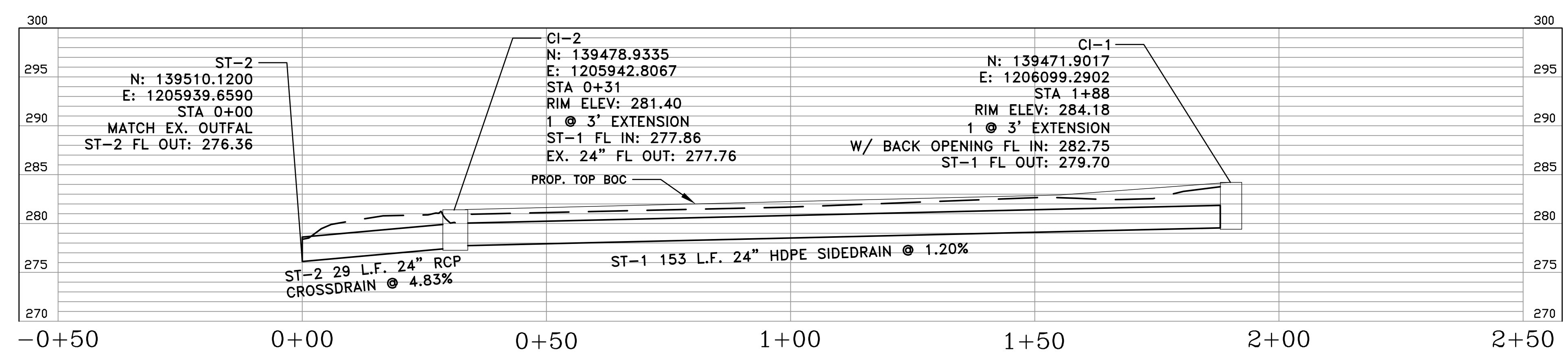
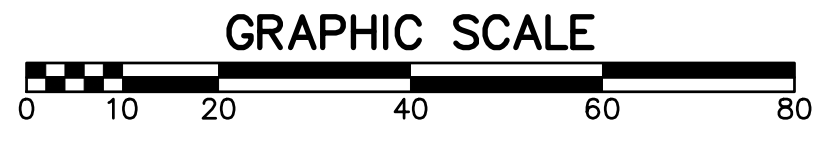
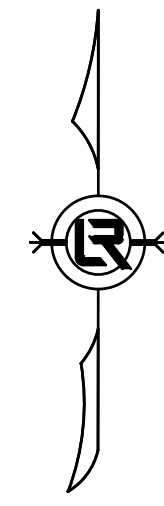
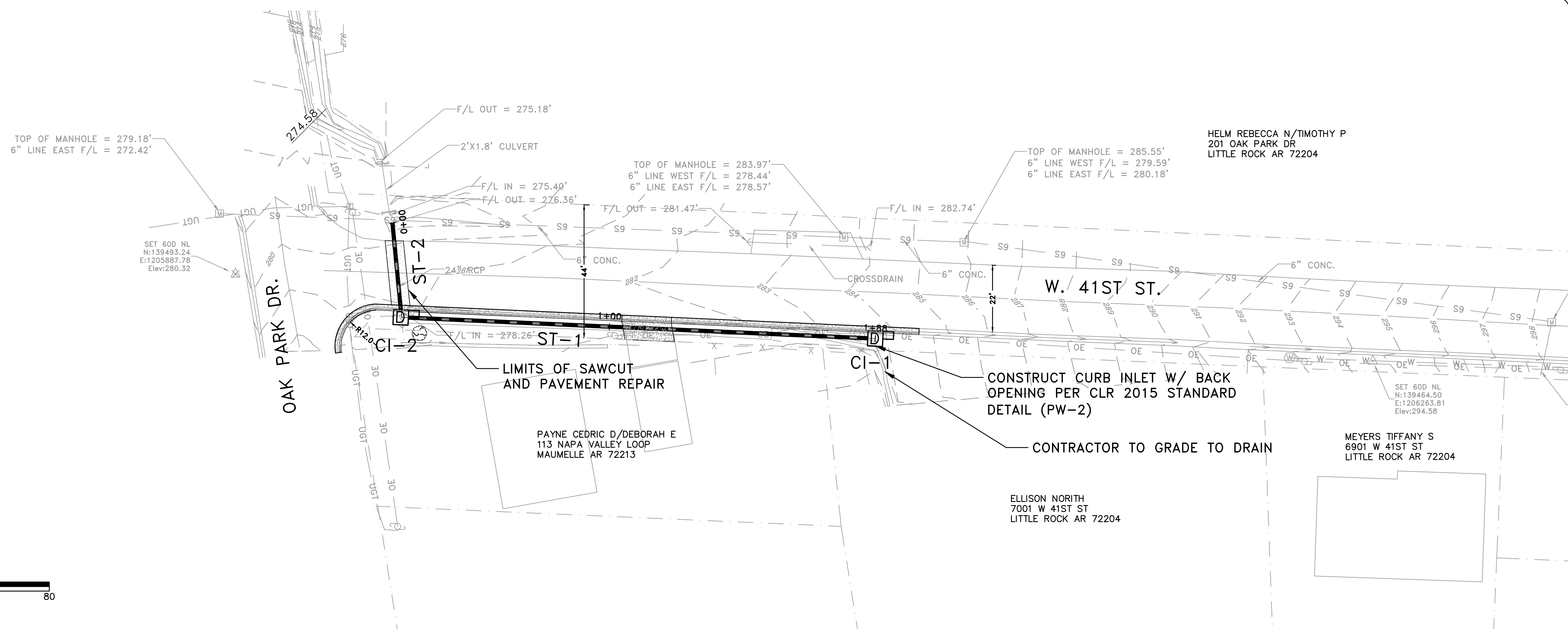
REVISIONS	DATE

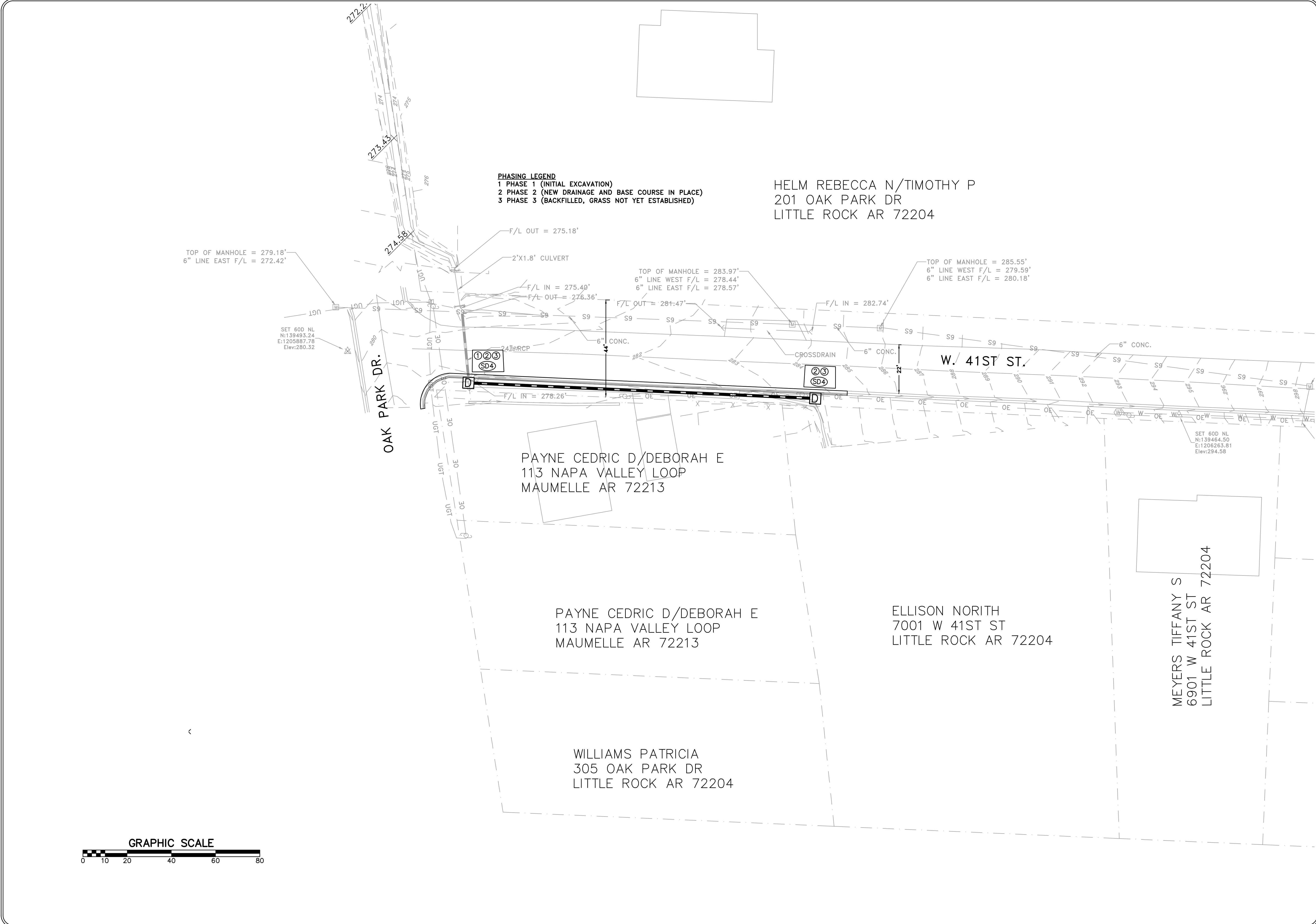
CITY OF LITTLE ROCK, ARKANSAS
7-18-DR-241 W. 41st STREET DRAINAGE
DRAINAGE PLAN AND PROFILE


DEPARTMENT OF PUBLIC WORKS
CIVIL ENGINEERING
701 W. MARKHAM
LITTLE ROCK, ARKANSAS 72201


DARRINGTON, JR.
LICENSED PROFESSIONAL ENGINEER
No. 20584
01-16-2024

DRAWN BY
ASC
DESIGNED
ASC
CHECKED
RBD
DATE
JANUARY, 2024
SCALE
1"=20'
PROJECT NO.
CLR # 7-18-DR-241
SHEET NO.
C5





PHASING LEGEND
 1 PHASE 1 (INITIAL EXCAVATION)
 2 PHASE 2 (NEW DRAINAGE AND BASE COURSE IN PLACE)
 3 PHASE 3 (BACKFILLED, GRASS NOT YET ESTABLISHED)

HELM REBECCA N/TIMOTHY P
 201 OAK PARK DR
 LITTLE ROCK AR 72204

PAYNE CEDRIC D/DEBORAH E
 113 NAPA VALLEY LOOP
 MAUMELLE AR 72213

PAYNE CEDRIC D/DEBORAH E
 113 NAPA VALLEY LOOP
 MAUMELLE AR 72213

ELLISON NORITH
 7001 W 41ST ST
 LITTLE ROCK AR 72204

MEYERS TIFFANY S
 6901 W 41ST ST
 LITTLE ROCK AR 72204

WILLIAMS PATRICIA
 305 OAK PARK DR
 LITTLE ROCK AR 72204

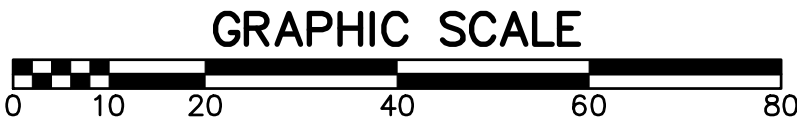
TOP OF MANHOLE = 279.18'
 6" LINE EAST F/L = 272.42'

TOP OF MANHOLE = 283.97'
 6" LINE WEST F/L = 278.44'
 6" LINE EAST F/L = 278.57'

TOP OF MANHOLE = 285.55'
 6" LINE WEST F/L = 279.59'
 6" LINE EAST F/L = 280.18'

SET 60D NL
 N:139493.24
 E:1205887.78
 Elev:280.32

SET 60D NL
 N:139464.50
 E:1206263.81
 Elev:294.58



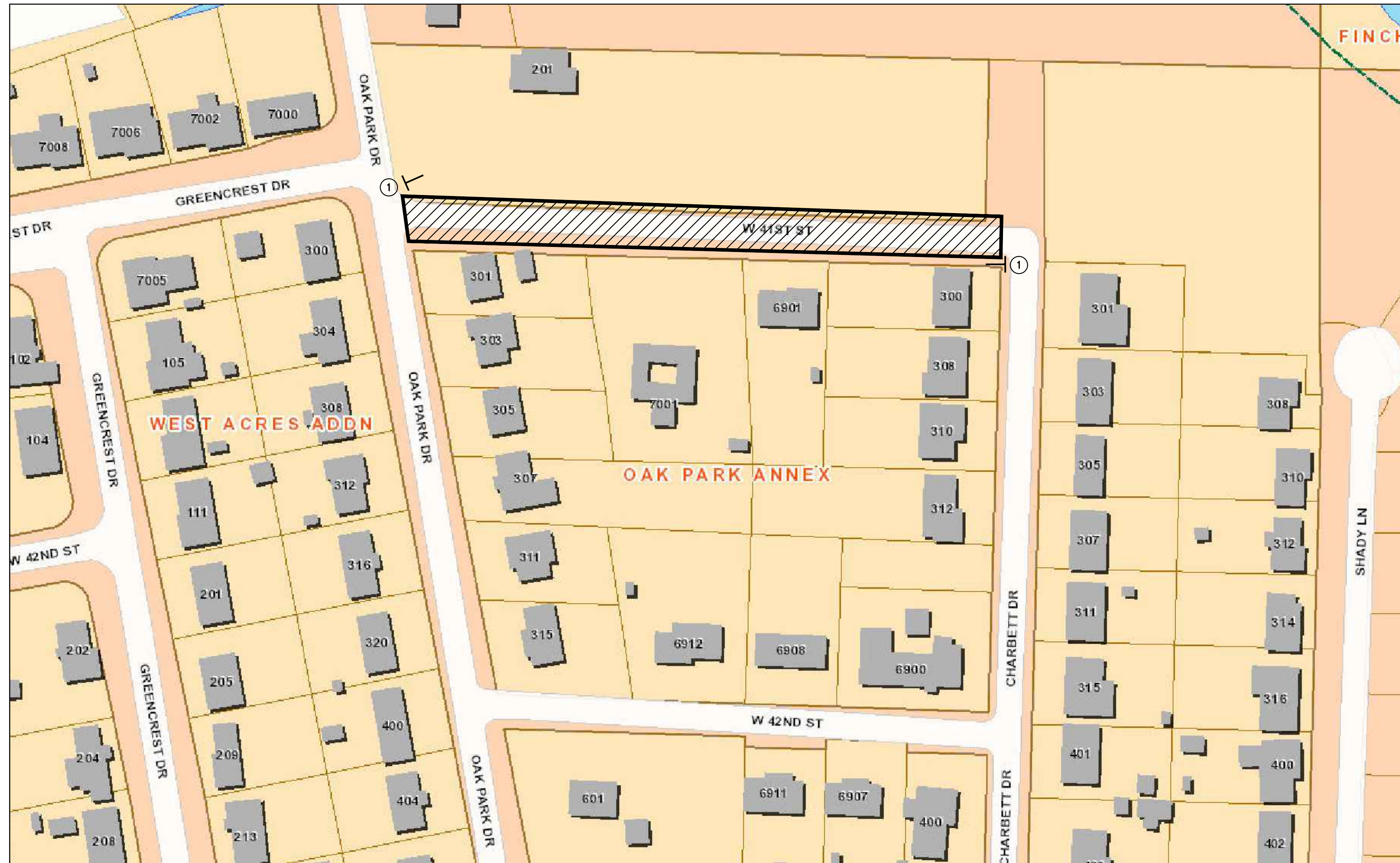
REVISIONS	DATE

CITY OF LITTLE ROCK, ARKANSAS
 7-18-DR-241 W. 41st STREET DRAINAGE
 EROSION CONTROL PLAN

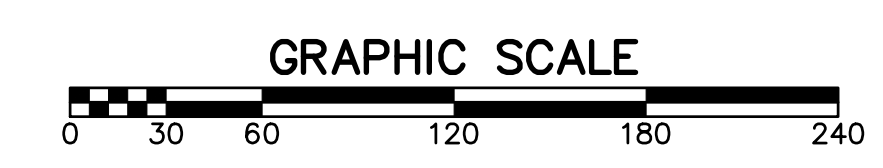
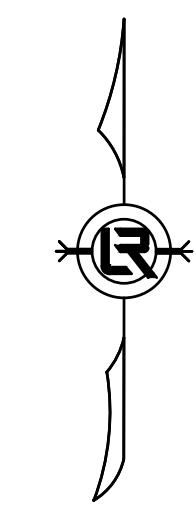
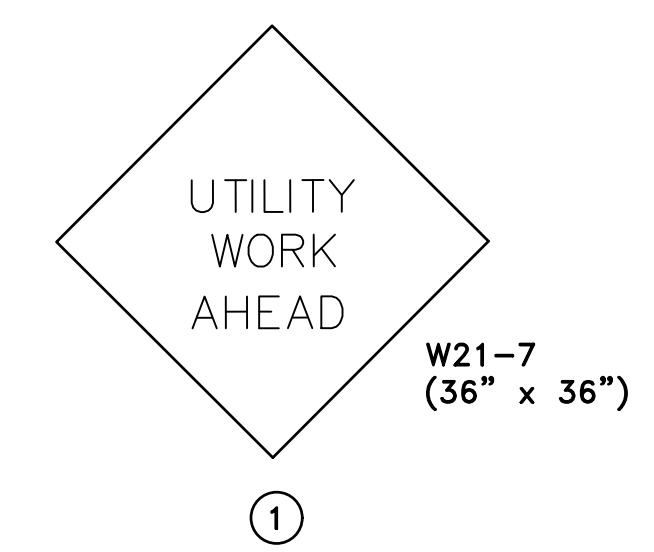
DEPARTMENT OF PUBLIC WORKS
 CIVIL ENGINEERING
 701 W. MARKHAM
 LITTLE ROCK, ARKANSAS 72201

STATE OF ARKANSAS
 LICENSED PROFESSIONAL ENGINEER
 No. 20584
 DARR INGTON, JR.
 01-16-2024

DRAWN BY ASC
DESIGNED ASC
CHECKED RBD
DATE JANUARY, 2024
SCALE 1"=20'
PROJECT NO. CLR # 7-18-DR-241
SHEET NO. C6



- MAINTENANCE OF TRAFFIC NOTES:
- WITHIN CONSTRUCTION LIMITS CONTRACTOR SHALL:
 - * IN GENERAL, INSTALL DRAINAGE CULVERT ACROSS STREET FIRST, MAINTAINING LOCAL TRAFFIC ON ONE HALF OF W. 41ST ST. AT ALL TIMES.
 - * MAINTAIN CONTINUOUS VEHICULAR ACCESS TO ALL RESIDENCES.
 - * PROVIDE, INSTALL, AND MAINTAIN (INCLUDING RELOCATION AS NEEDED) ALL TRAFFIC CONTROL DEVICES.
 - * PROVIDE CHANNELING DEVICES (DRUMS OR CONES) THROUGHOUT PROJECT TO SEPARATE OPEN TRAFFIC LANES/PATHS FROM CONSTRUCTION AREAS.
 - PAVEMENT RECONSTRUCTION MUST TAKE PLACE AFTER INSTALLATION OF PROPOSED CURB AND GUTTER AND PAVEMENT REPAIR FOR CROSS DRAIN IS COMPLETE. CONTRACTOR TO REQUEST APPROVAL FROM THE ENGINEER BEFORE BEGINNING PAVEMENT RECONSTRUCTION OPERATIONS.



REVISIONS	DATE

CITY OF LITTLE ROCK, ARKANSAS
7-18-DR-241 W. 41st STREET DRAINAGE
MAINTENANCE OF TRAFFIC PLAN

DEPARTMENT OF PUBLIC WORKS
CIVIL ENGINEERING
701 W. MARKHAM
LITTLE ROCK, ARKANSAS 72201

STATE OF ARKANSAS
DARRINGTON, JR.
LICENSED PROFESSIONAL ENGINEER
No. 20584
02-16-2024

DRAWN BY
ASC
DESIGNED
ASC
CHECKED
RBD
DATE
JANUARY, 2024
SCALE
1"=60'
PROJECT NO.
CLR # 7-18-DR-241
SHEET NO.
C7