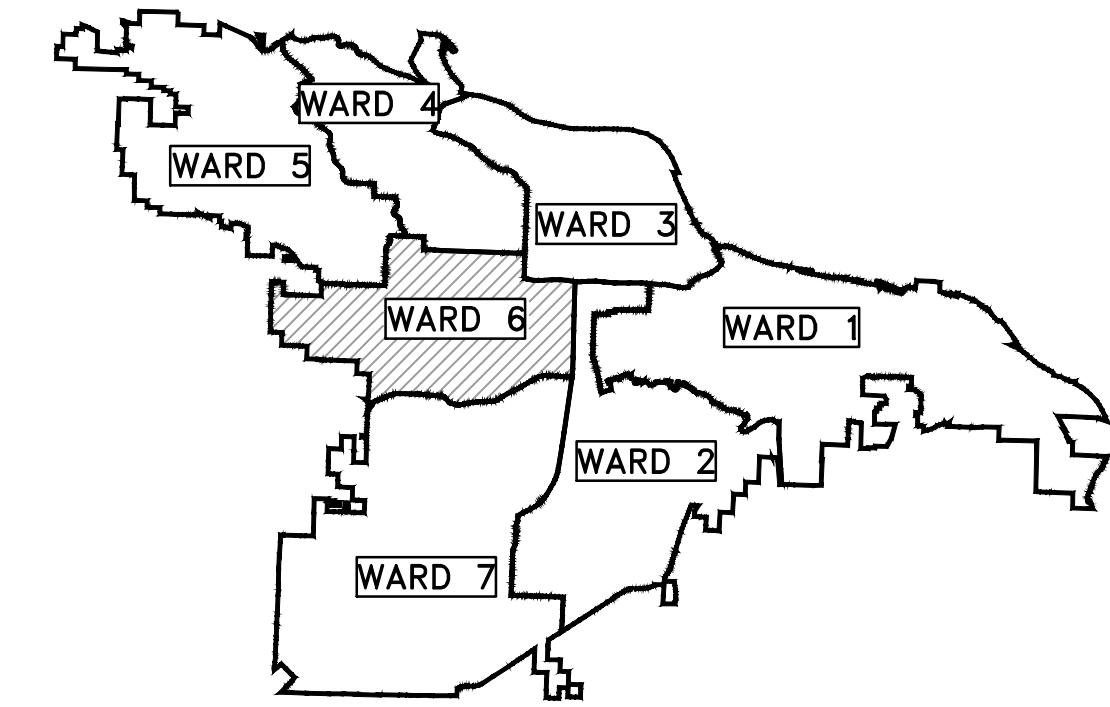


ZION STREET EXTENSION

37TH ST TO 38TH ST

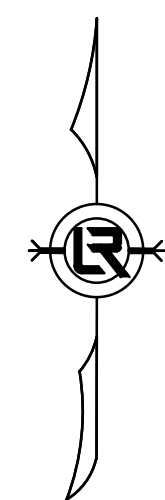


PROJECT LOCATION – WARD 6

PROJECT
LOCATION



SHEET NO.	TITLE
C0	COVER SHEET
C1	GENERAL NOTES, LEGEND AND QUANTITY
C2	TYPICAL SECTIONS
C3	EXISTING CONDITIONS
C4	PRELIMINARY PLAT
C5	PLAN AND PROFILE
C6	UTILITY PLAN
C7	CROSS SECTIONS
C8	SURVEY CONTROL PLAN
C9	EROSION CONTROL PLAN - PHASE 1
C10	EROSION CONTROL PLAN - PHASE 2 & 3
C11	MAINTENANCE OF TRAFFIC PLAN
C12	PROPERTY OWNERSHIP MAP



DEPARTMENT OF PUBLIC WORKS
CIVIL ENGINEERING
701 WEST MARKHAM STREET
LITTLE ROCK, ARKANSAS 72201



Know what's below.
Call before you dig.

GNE

Designing our client's success

GarNat Engineering, LLC

P.O. Box 116 (72018)
3825 Mt Carmel Rd
Bryant, AR 72022

Ph (501) 408-4650
Fx (888) 900-3068
garnatengineering@gmail.com

REVISIONS DATE

CITY OF LITTLE ROCK, ARKANSAS
ZION STREET EXTENSION

COVER SHEET



DEPARTMENT OF PUBLIC WORKS
CIVIL ENGINEERING
701 W. MARKHAM
LITTLE ROCK, ARKANSAS 72201



04-13-2023

DRAWN BY

TM

DESIGNED

VJW & TM

CHECKED

VJW

DATE

03-24-2023

SCALE

N.T.S.

PROJECT NO.

22116


SHEET NO.

C0

REVISIONS	DATE

CITY OF LITTLE ROCK, ARKANSAS
ZION STREET EXTENSION
GENERAL NOTES, LEGEND AND QUANTITY

DEPARTMENT OF PUBLIC WORKS
CIVIL ENGINEERING
500 W. MARKHAM
LITTLE ROCK, ARKANSAS 72201




DRAWN BY
TM
DESIGNED
VJW & TM
CHECKED
VJW
DATE
03-24-2023
SCALE
1"=20' (22X34)
PROJECT NO.
22116
SHEET NO.
C1

Zion Street Extension-100% QUANTITIES

19-Apr-2023

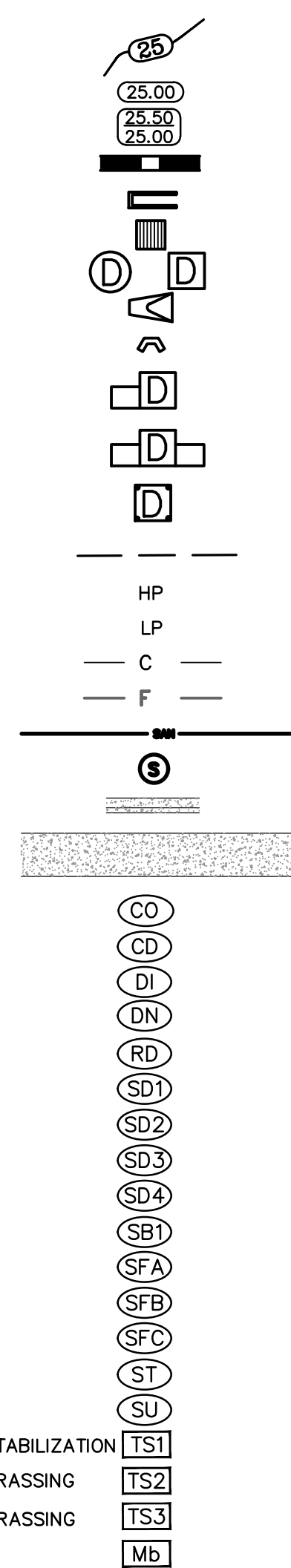
Item#	Description	Unit	Quantity
2.01	Site Preparation	LS	1
2.02	Clearing and Grubbing	LS	1
3.01	Unclassified Excavation	CY	290
3.06	Borrow Material	CY	290
3.40	Top Soil	CY	45
4.01	Aggregate Base Course	TON	251
5.01	Tack Coat	GAL	81
6.10	ACHM Surface Course	TON	146
7.06	Concrete Driveway and Apron (6" Thick)	SF	835
8.01	Concrete Curb and Gutter (Class 3)	LF	640
9.10	Concrete Sidewalk	SF	1500
10.05	Curb Inlet 5' Box	EA	2
10.07	Wing 3' Extension	EA	2
13.18	Storm Drain Pipe, 18" Cross Drain)	LF	252
14.01	Solid Sod, Bermuda	SY	270
16.01	Maintenance of Traffic	LS	1
17.01	Pavement Repair (PW-25)	SY	31
18.10	Manhole Rings & Covers Adjusted to Grade	EA	1
18.50	Access Ramp	SF	70
18.55	Water for Dust Control	GAL	10000
19.01	Final cleanup	LS	1
23.01	B Stone	TON	510
24.06	Sediment Barrier, Silt Fence (SD1)	EA	6
24.09	Sediment Barrier, Block (SD-4)	EA	6
26.10	Trench excavation & safety	LS	1
24.11	Silt Fence Type A (SFA)	LF	640
27.10	Cold Milling Asphalt Pavement	SY	60
726.01	Standard Sign	SF	18.75
729.01	Channel Post Sign Support (Type)	EA	2
733.12 & SP	18" Street Name Sign	EA	4
SS3.0	4" SCH 40 Sanitary Sewer Service W/ two-way Cleanouts	LF	160
SP	8" Ductile Iron Sanitary Sewer Main	LF	115
SP	Verify Sanitary Sewer Depth Sta. 2+60 to 3+75	LS	1
SP	Core Drill Including Grout & Pipe Installation	LS	1
	Water Meter per CAW Standards	EA	4
	Fire Hydrant Relocation per CAW Standards	EA	1

EXISTING

- IRON ROD ○ IR
- PK NAIL ○ PK
- R.R. SPIKE ○ RR(Sp)
- CONC. MONUMENT □ CM
- WATER VALVE X WV
- WATER METER □ WM
- FIRE HYDRANT ∇ FH
- GAS METER □ GM
- GAS VALVE ⊗ GV
- CLEAN-OUT ○ CO
- SIGN POST • GP
- BENCHMARK ⊕
- STORM SEWER MANHOLE (D)
- SANITARY SEWER MANHOLE (S)
- TELEPHONE MANHOLE (T)
- ELECTRIC MANHOLE (E)
- TELEPHONE BOX □
- ELECTRIC BOX □
- CABLE BOX □
- UTILITY POLE ⊕
- GUY WIRE ⊕
- LIGHT POLE ⊕
- POST OR POLE (TYPE AS NOTED) ⊕
- MAILBOX ⊕
- DECIDUOUS TREE ⊕
- EVERGREEN/CONIFEROUS TREE ⊕
- BUSH ⊕
- PROPERTY LINE ————
- SETBACK LINE ————
- EASEMENT LINE ————
- CURB ————
- FENCE — X — X —
- OVERHEAD UTILITY — OHP — OHP —
- UNDERGROUND TELEPHONE — UGT — UGT — UGT —
- UNDERGROUND ELECTRIC — UGE — UGE — UGE —
- WATER LINE — 8"W — 8"W — 8"W —
- SEWER LINE — SAN —
- GAS LINE — GAS — GAS — GAS —
- STORM SEWER/CULVERT — 24" CMP/RCP/DIP —
- CONTOUR LINE — 650 —

PROPOSED

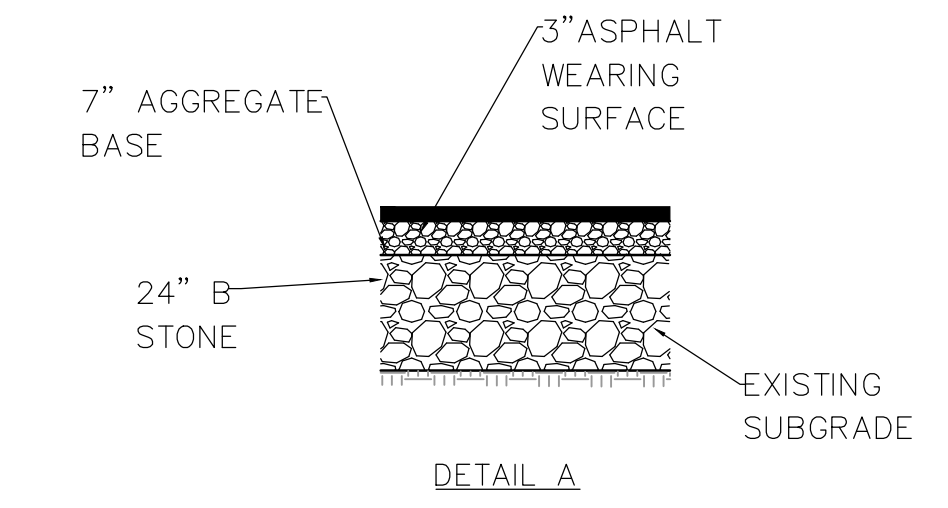
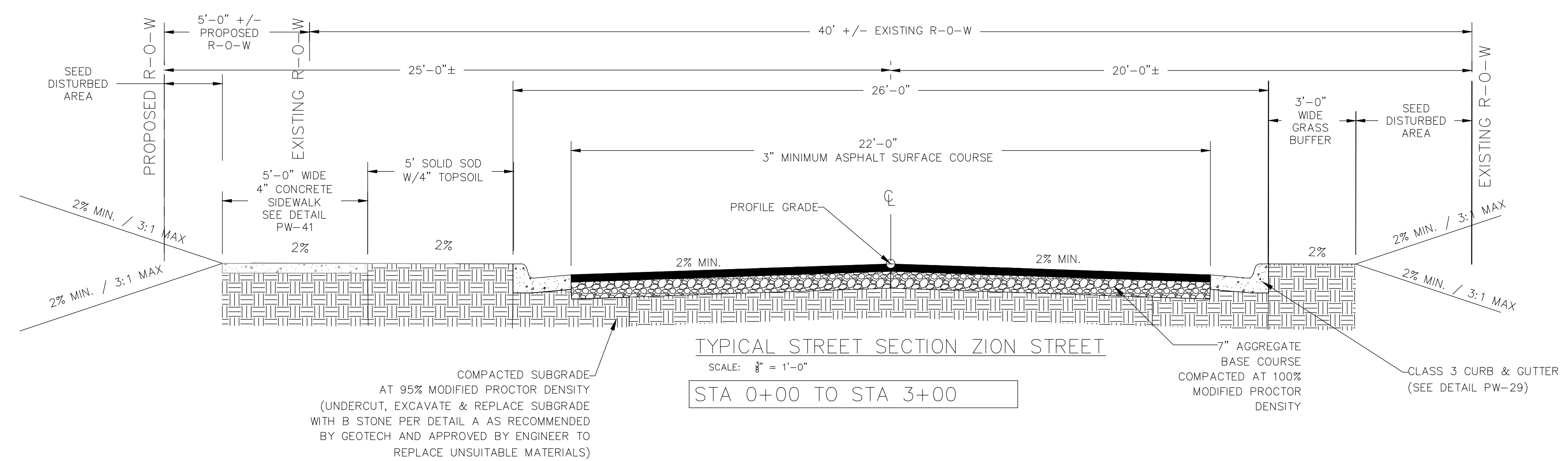
- CONTOUR (25.00)
- SPOT ELEVATION (25.50)
- SPOT CURB ELEVATION (25.00)
- STORM SEWER — PIPE
- STORM SEWER — MITERED END SECTION
- STORM SEWER — GRATE INLET
- STORM SEWER — JUNCTION BOX
- STORM SEWER — FLARED END SECTION
- STORM SEWER — HEADWALL
- STORM SEWER — INLET WITH SINGLE EXTENSION
- STORM SEWER — INLET WITH DOUBLE EXTENSION
- STORM SEWER — AREA INLET
- GRADE BREAK LINE
- HIGH POINT HP
- LOW POINT LP
- CUT LINE C
- FILL LINE F
- SANITARY SEWER PIPE
- SANITARY SEWER MANHOLE
- CURB
- CONCRETE
- CONSTRUCTION — ENTRANCE/EXIT
- CHECK DAM
- DIVERSION BERM
- DOWNDRAIN STRUCTURE — TEMPORARY
- ROCK DAM
- SEDIMENT BARRIER — SILT FENCE
- SEDIMENT BARRIER — GRAVEL RING
- SEDIMENT BARRIER — BLOCK & GRAVEL
- SEDIMENT BARRIER — BLOCK
- TEMPORARY SEDIMENT BASIN
- SILT FENCE — TYPE A
- SILT FENCE — TYPE B
- SILT FENCE — TYPE C
- STORM DRAIN OUTLET PROTECTION
- SURFACE ROUGHENING
- DISTURBED AREA STABILIZATION —TEMPORARY STABILIZATION
- DISTURBED AREA STABILIZATION —TEMPORARY GRASSING
- DISTURBED AREA STABILIZATION —PERMANENT GRASSING
- MATTING/BLANKETS



REVISIONS	DATE

GENERAL STREET CONSTRUCTION NOTES:

1. WORK ASSOCIATED WITH THESE DETAILS COMPLY WITH LITTLE ROCK PW-22 DETAIL.



CITY OF LITTLE ROCK, ARKANSAS
ZION STREET EXTENSION
TYPICAL SECTIONS

DEPARTMENT OF PUBLIC WORKS
CIVIL ENGINEERING
701 W. MARKHAM
LITTLE ROCK, ARKANSAS 72201

PRELIMINARY

DRAWN BY
TM
DESIGNED
VJW & TM
CHECKED
VJW
DATE
03-24-2023
SCALE
N.T.S.
PROJECT NO.
22116
SHEET NO.
C2

REVISIONS	DATE

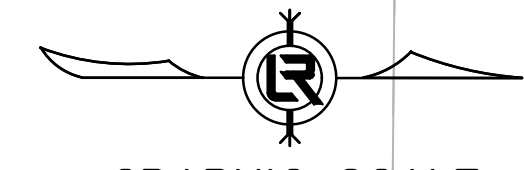
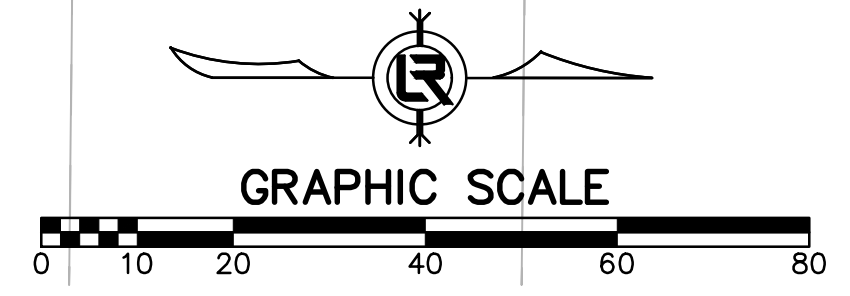
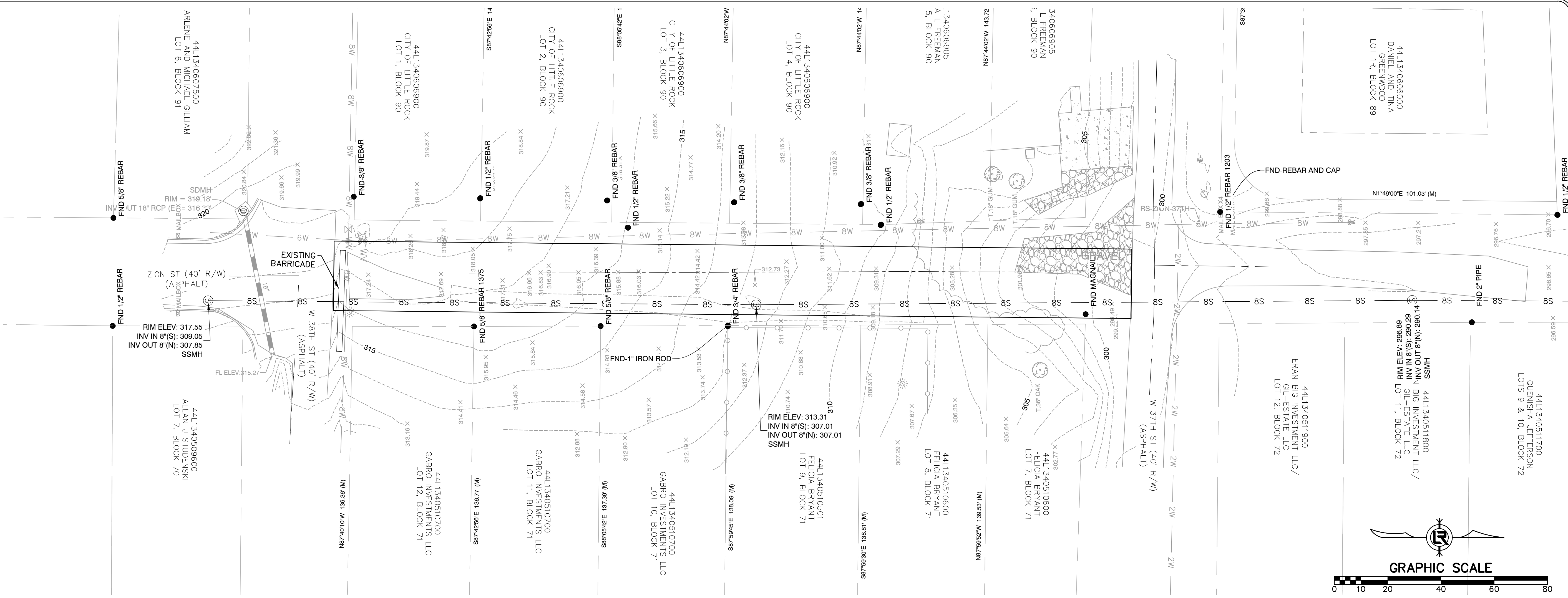
CITY OF LITTLE ROCK, ARKANSAS
ZION STREET EXTENSION
EXISTING CONDITIONS

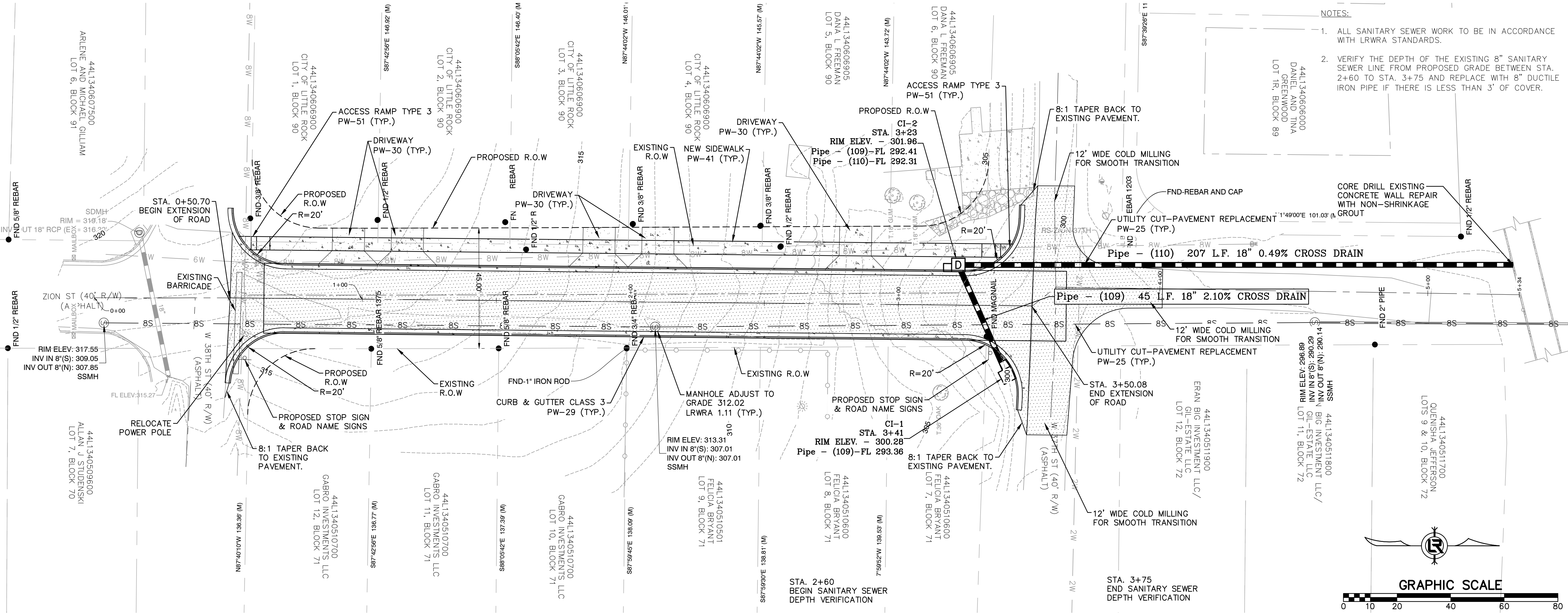
1022 L
 DEPARTMENT OF PUBLIC WORKS
 CIVIL ENGINEERING
 101 W. MARKHAM
 LITTLE ROCK, ARKANSAS



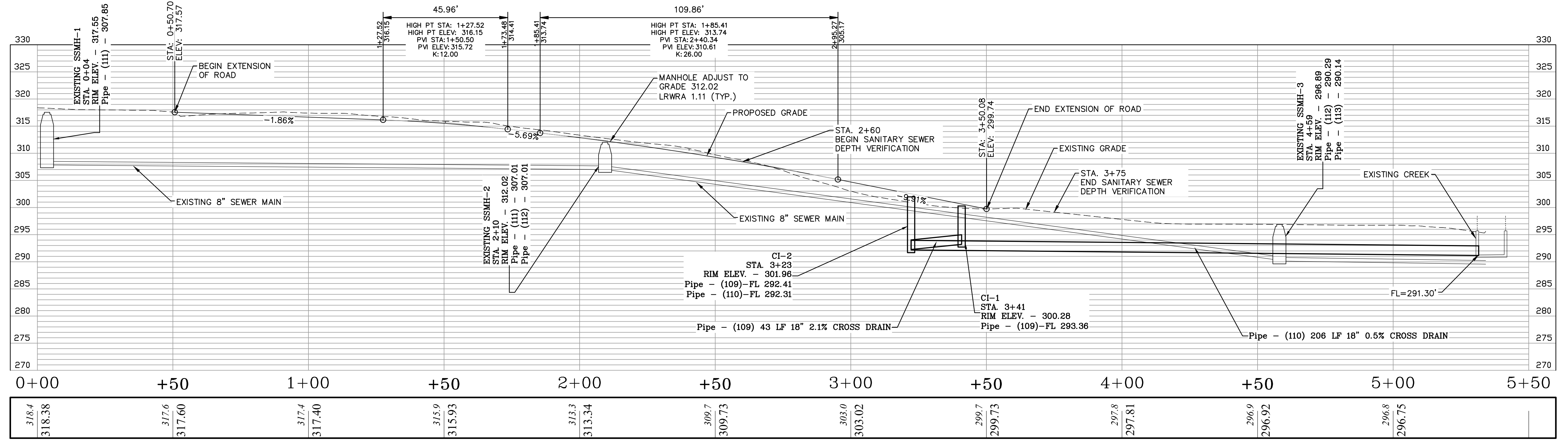
04-13-2023

DRAWN BY TM
DESIGNED VJW & TM
CHECKED VJW
DATE 03-24-2023
SCALE 1"=20' (22X34)
PROJECT NO. 22116
SHEET NO. C3





- NOTES:
1. ALL SANITARY SEWER WORK TO BE IN ACCORDANCE WITH LRWRA STANDARDS.
 2. VERIFY THE DEPTH OF THE EXISTING 8" SANITARY SEWER LINE FROM PROPOSED GRADE BETWEEN STA. 2+60 TO STA. 3+75 AND REPLACE WITH 8" DUCTILE IRON PIPE IF THERE IS LESS THAN 3' OF COVER.



ZION STREET

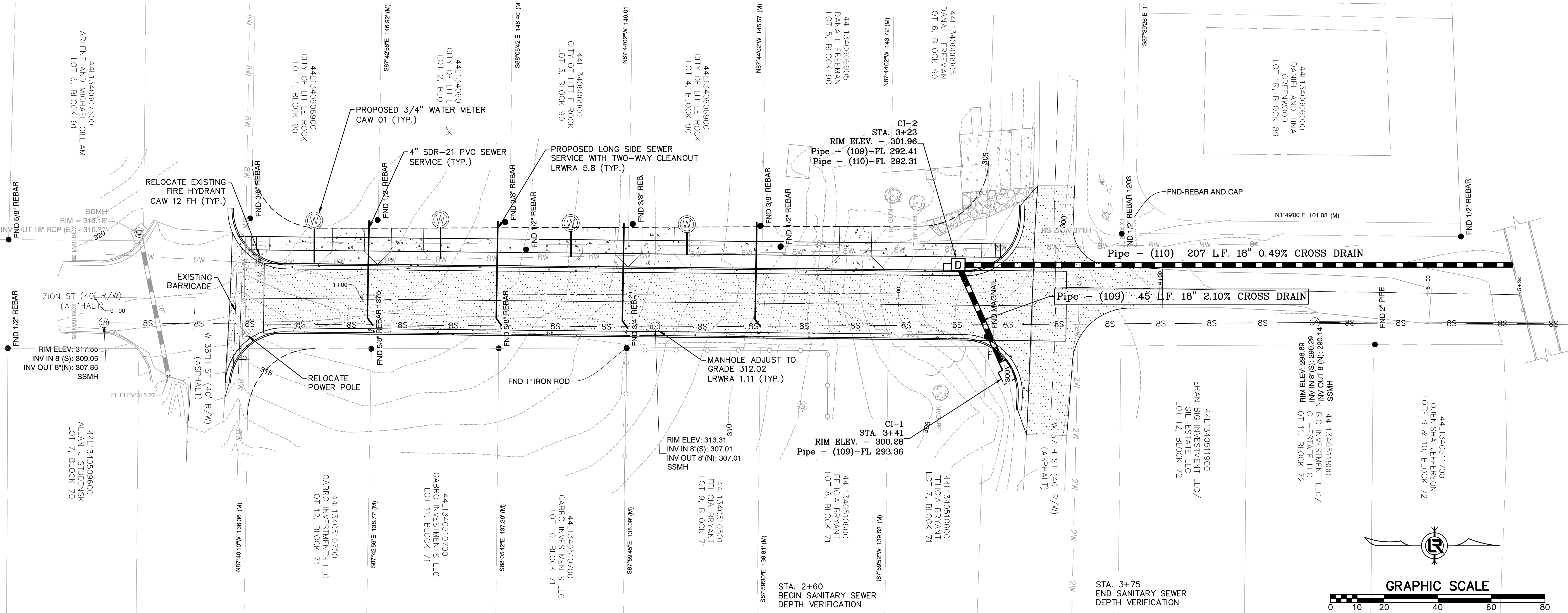
REVISIONS	DATE

CITY OF LITTLE ROCK, ARKANSAS
 ZION STREET EXTENSION
 PLAN AND PROFILE

DEPARTMENT OF PUBLIC WORKS
 CIVIL ENGINEERING
 701 W. MARKHAM
 LITTLE ROCK, ARKANSAS 72201

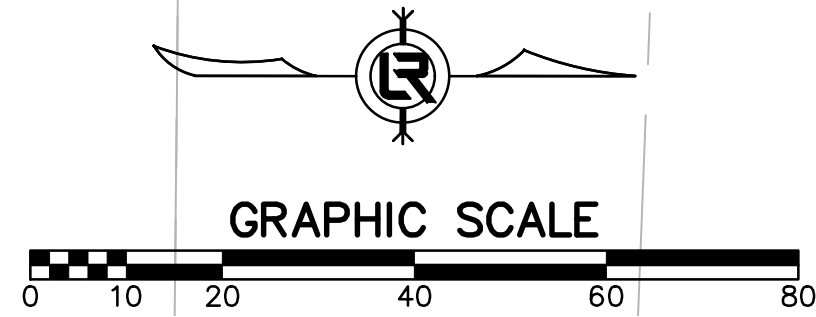


DRAWN BY
 TM
 DESIGNED
 VJW & TM
 CHECKED
 VJW
 DATE
 24-03-2023
 SCALE
 1"=20' (22X34)
 PROJECT NO.
 22116
 SHEET NO.
 C4



UTILITY NOTES:

1. ALL SEWER WORK SHALL COMPLY WITH THE REQUIREMENTS OF LITTLE ROCK WATER RECLAMATION AUTHORITY STANDARD SPECIFICATIONS AND THE ARKANSAS PLUMBING CODE. LITTLE ROCK WATER RECLAMATION AUTHORITY STANDARD SPECIFICATIONS ARE AVAILABLE FOR DOWNLOAD AT WWW.LRWRA.COM.
2. ALL WATER WORK SHALL COMPLY WITH THE REQUIREMENTS OF CENTRAL ARKANSAS WATER STANDARD SPECIFICATIONS AND THE ARKANSAS PLUMBING CODE. CENTRAL ARKANSAS WATER STANDARD SPECIFICATIONS ARE AVAILABLE FOR DOWNLOAD AT WWW.CARKW.COM.



REVISIONS	DATE

CITY OF LITTLE ROCK, ARKANSAS
ZION STREET EXTENSION
UTILITY PLAN

DEPARTMENT OF PUBLIC WORKS
CIVIL ENGINEERING
701 W. MARKHAM
LITTLE ROCK, ARKANSAS 72201

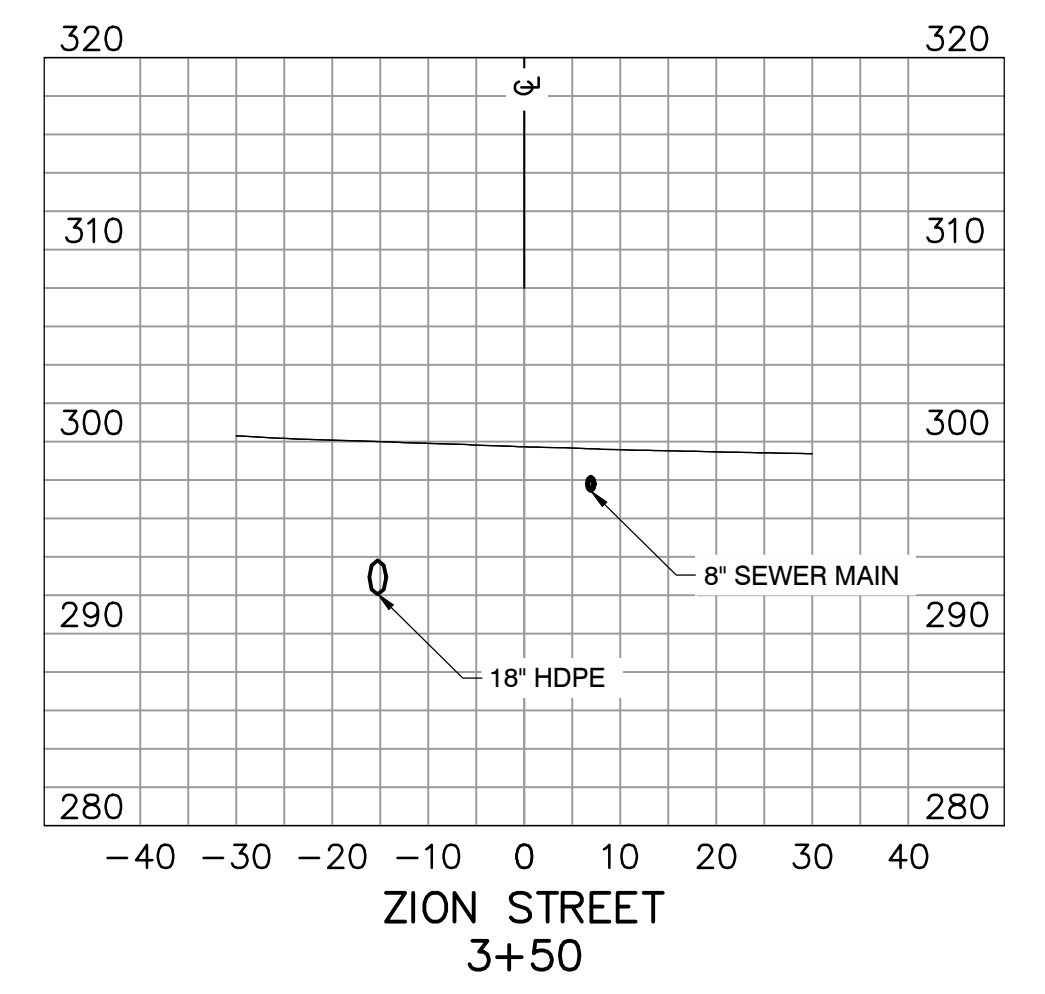
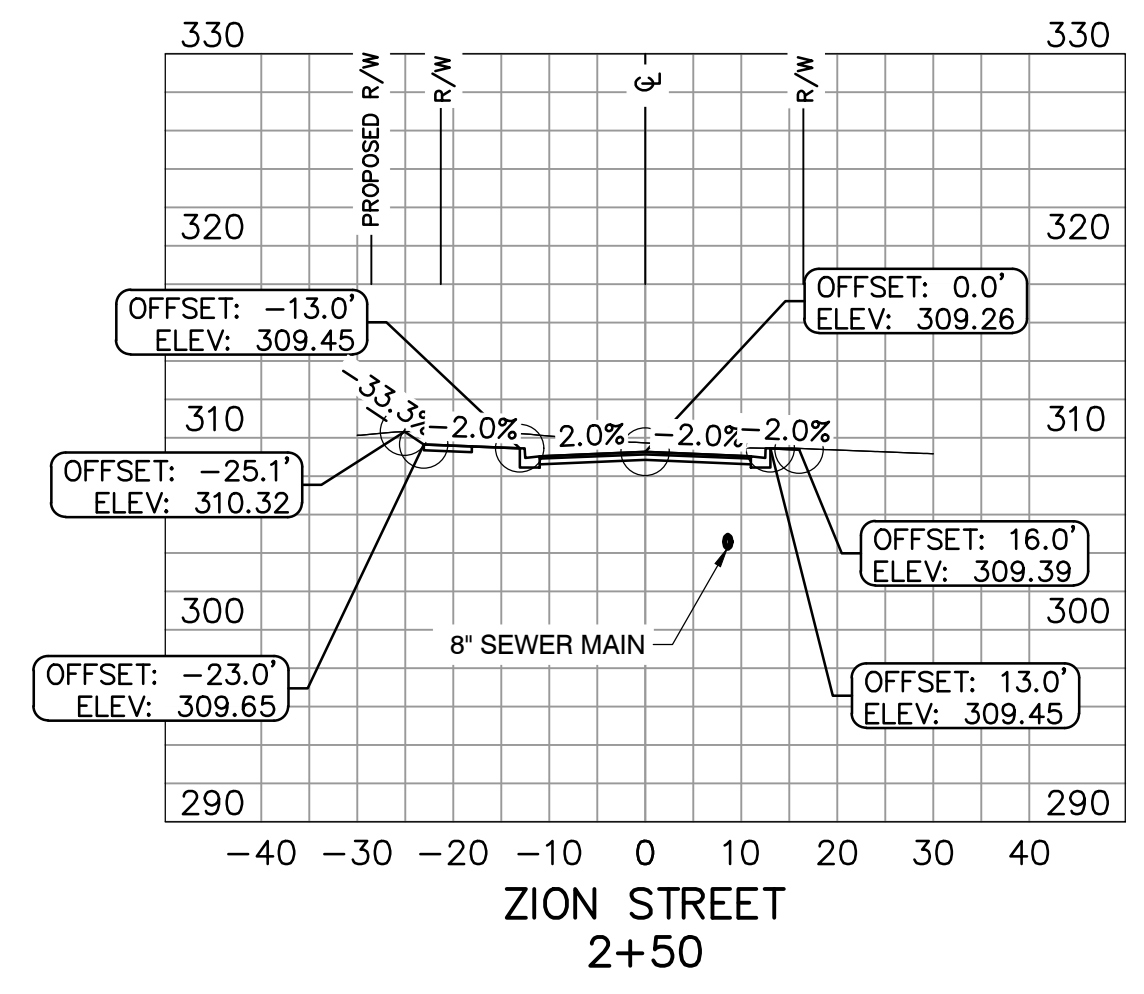
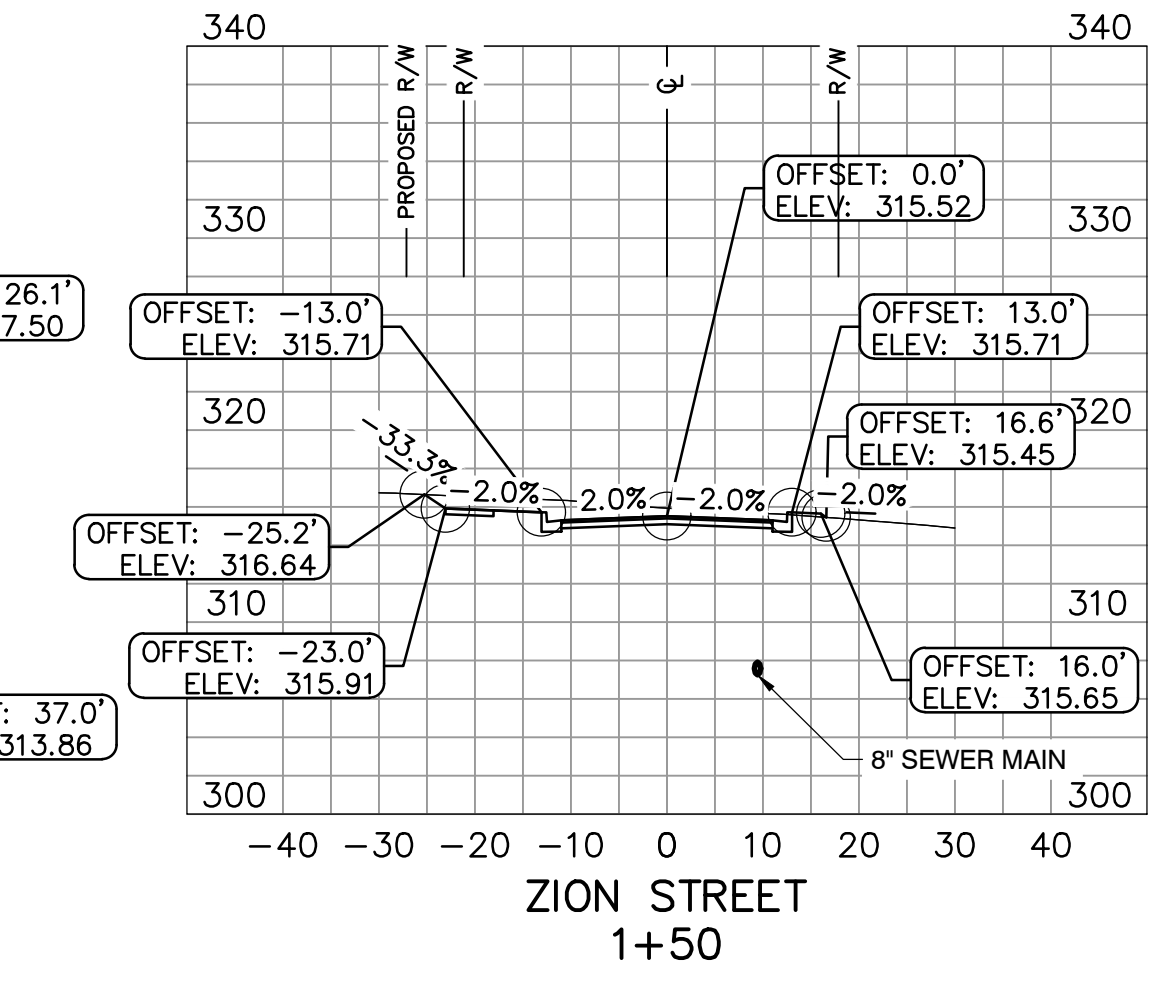
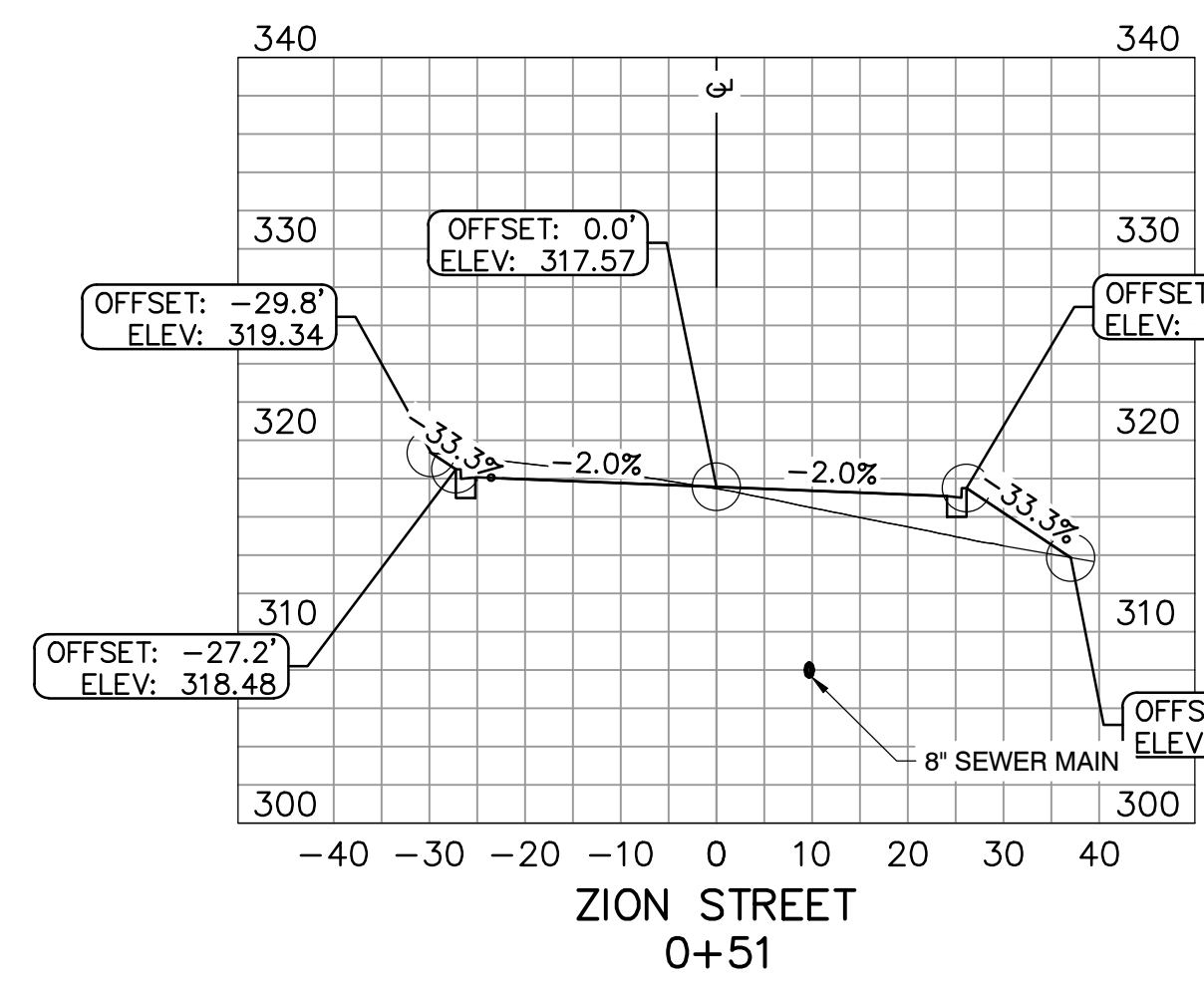
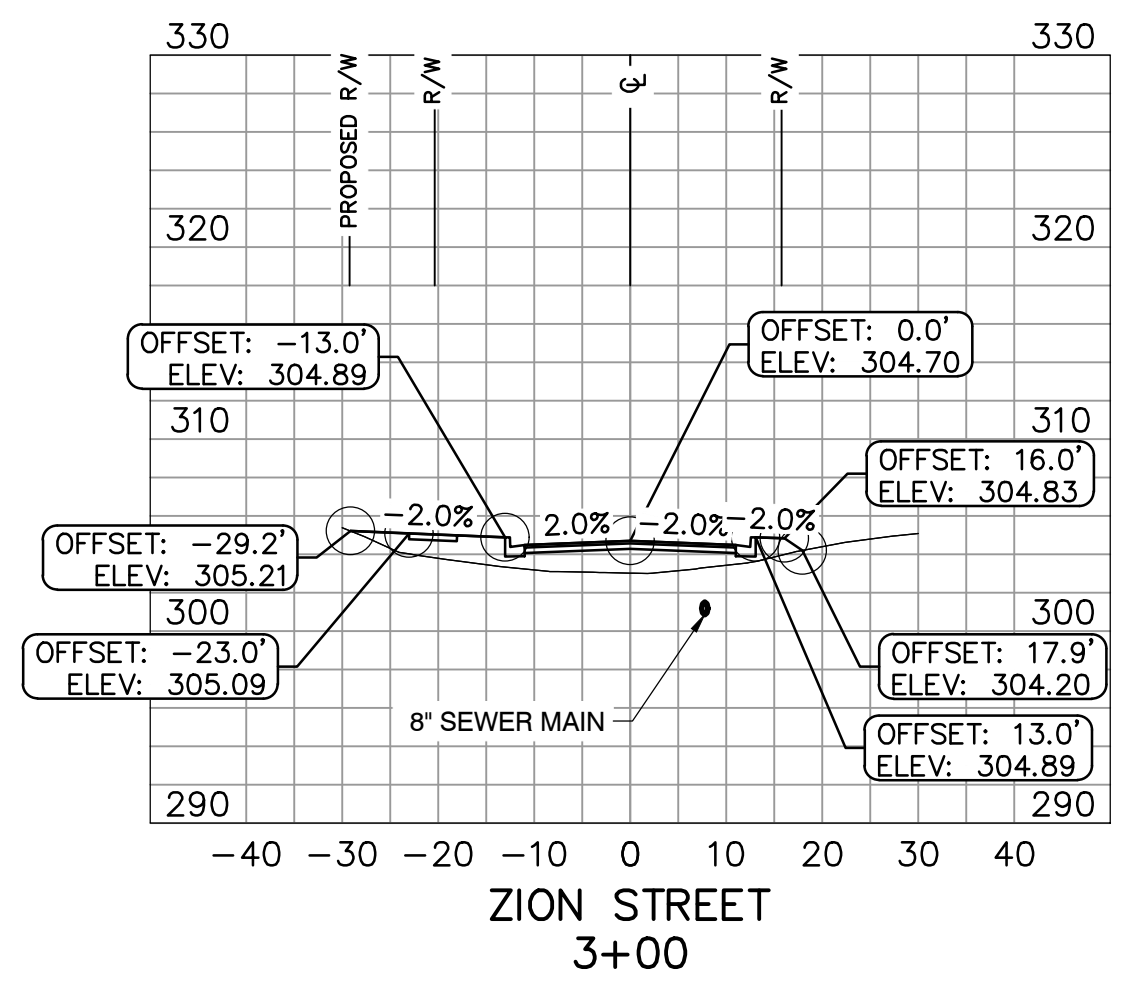
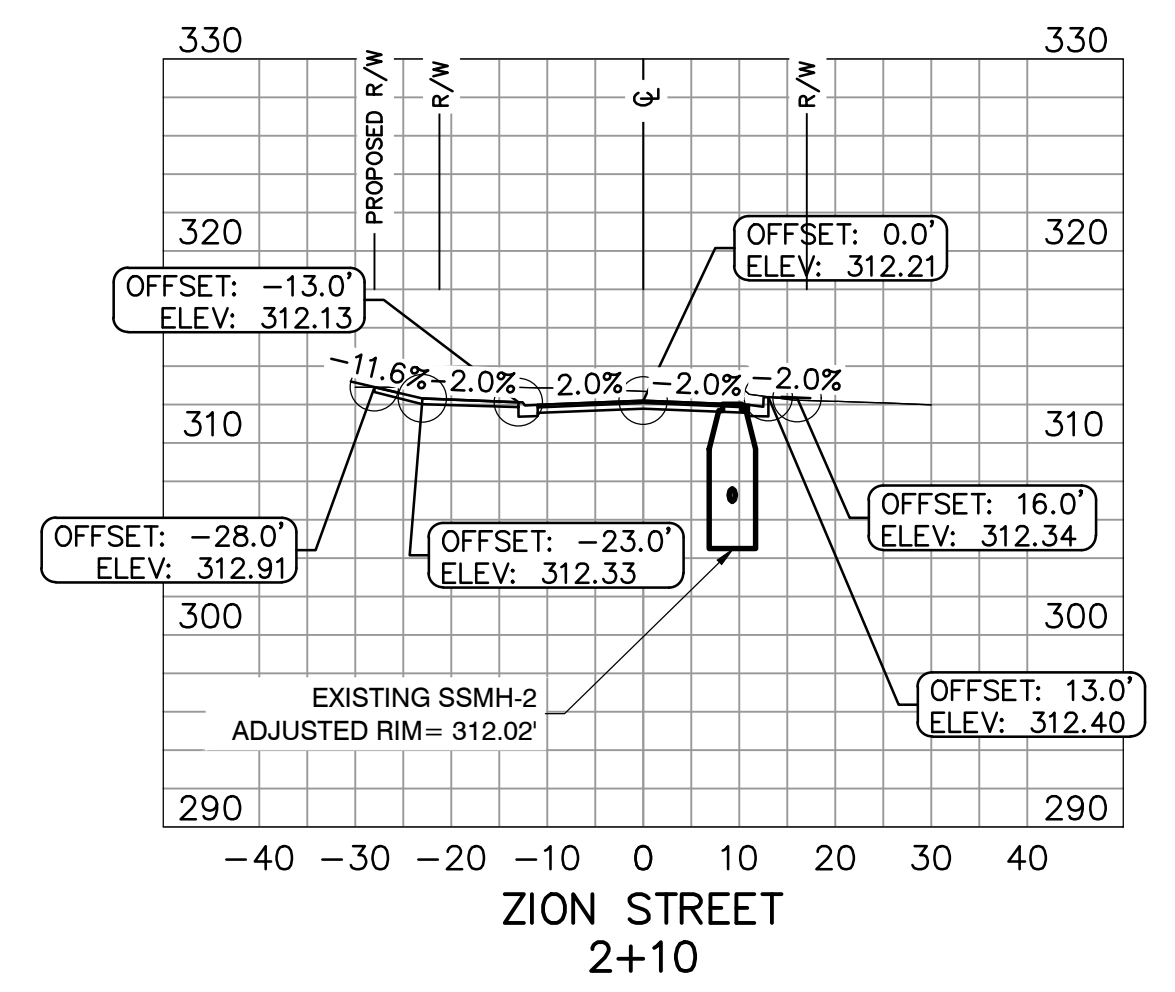
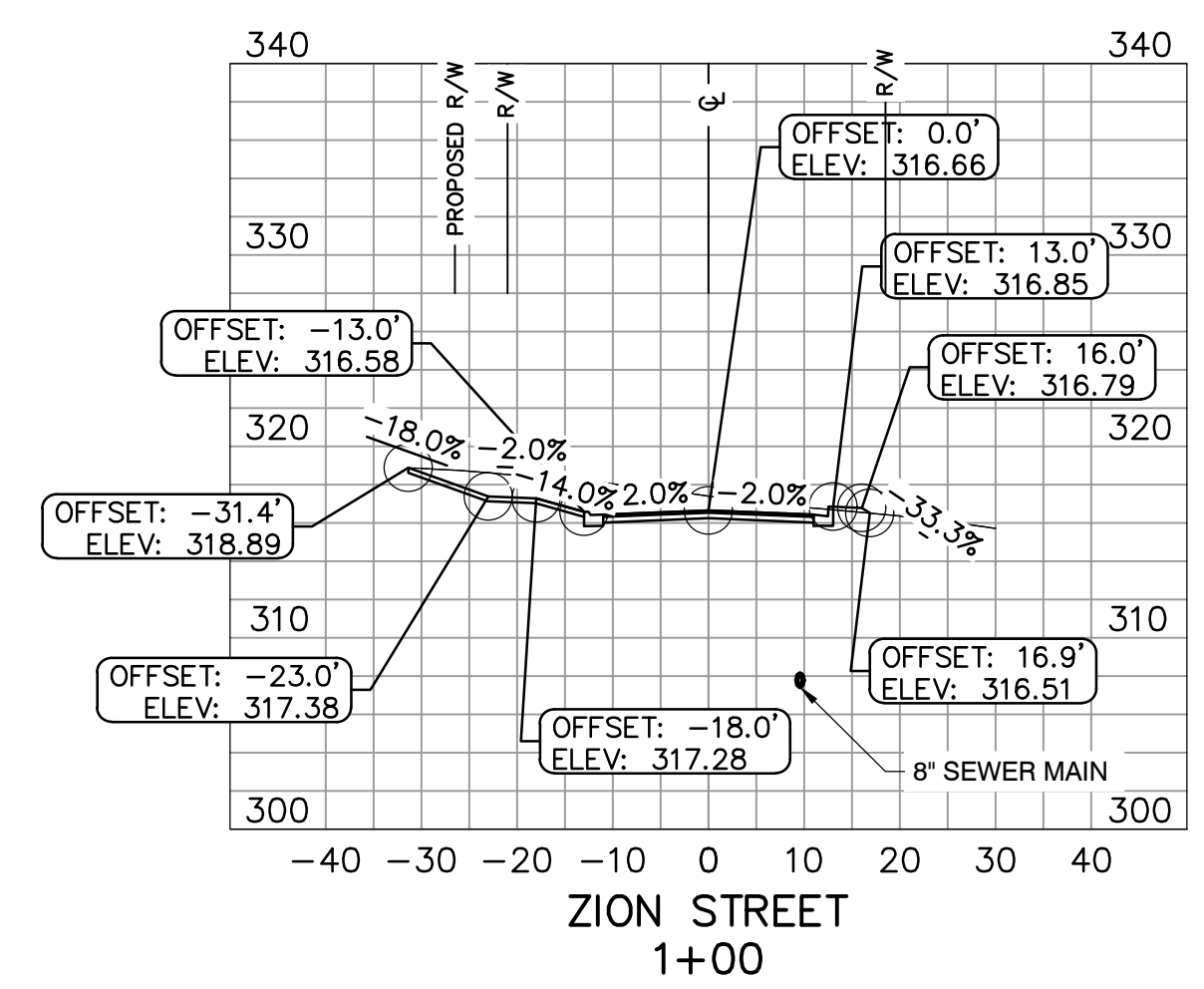


04-13-2023

DRAWN BY TM
DESIGNED VJW & TM
CHECKED VJW
DATE 03-24-2023
SCALE 1"=20' (22X34)
PROJECT NO. 22116
SHEET NO. C5

REVISIONS	DATE

CITY OF LITTLE ROCK, ARKANSAS
 ZION STREET EXTENSION
 CROSS SECTIONS

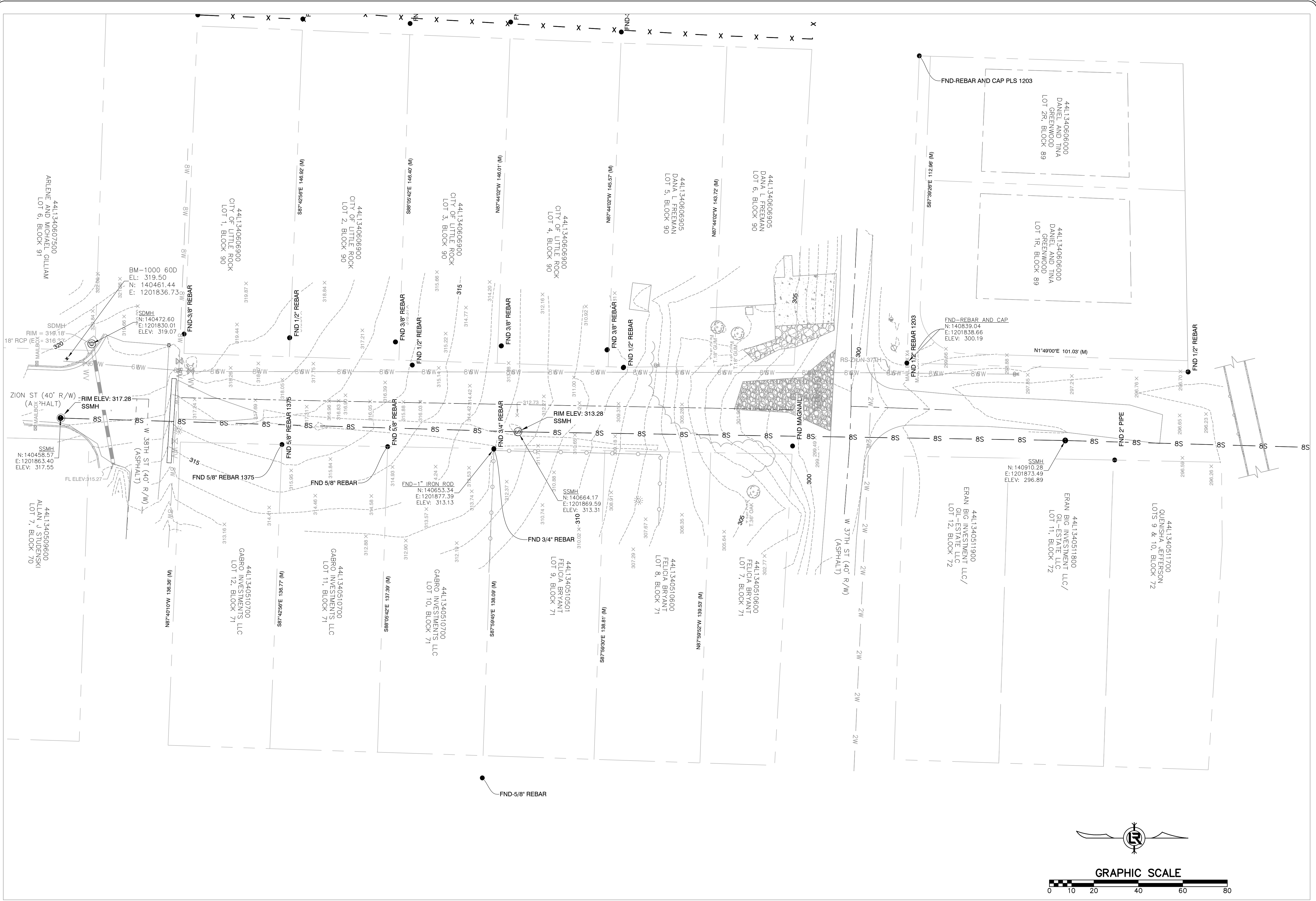


DEPARTMENT OF PUBLIC WORKS
 CIVIL ENGINEERING
 701 W. MARKHAM
 LITTLE ROCK, ARKANSAS 72201




04-13-2023

DRAWN BY
 TM
 DESIGNED
 VJW & TM
 CHECKED
 VJW
 DATE
 03-24-2023
 SCALE
 1"=20' (22X34)
 PROJECT NO.
 22116
 SHEET NO.
 C6



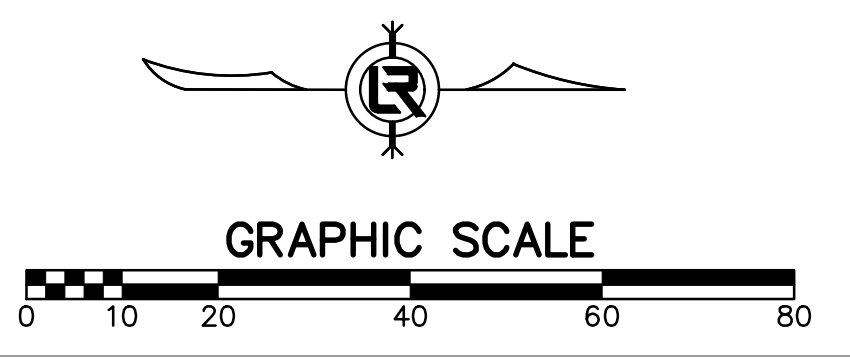
REVISIONS	DATE

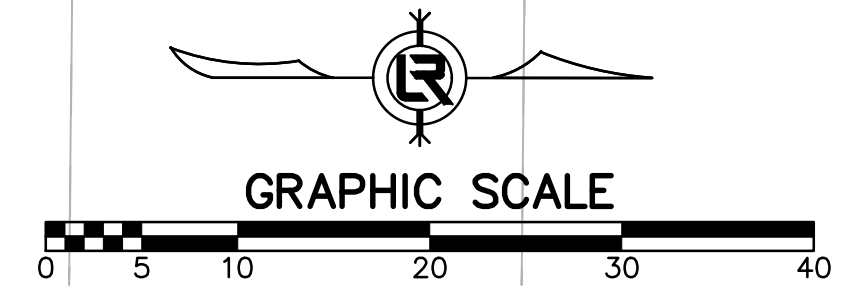
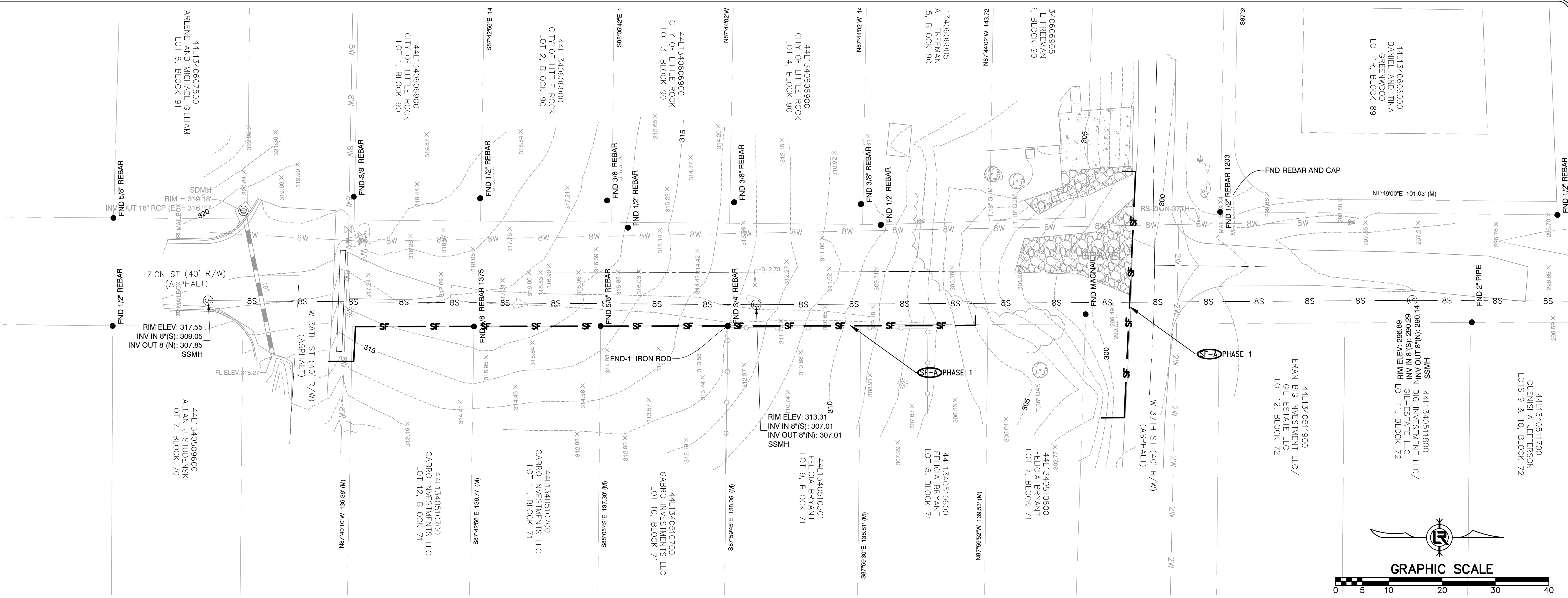
CITY OF LITTLE ROCK, ARKANSAS
ZION STREET EXTENSION
SURVEY CONTROL PLAN


 DEPARTMENT OF PUBLIC WORKS
 CIVIL ENGINEERING
 WAM
 101 W. MARKHAM
 LITTLE ROCK, ARKANSAS 72202


 STATE OF ARKANSAS
 REGISTERED PROFESSIONAL ENGINEER
 NO. 8551
 PERSON WILLIAMS
 04-13-2023

DRAWN BY TM
DESIGNED VJW & TM
CHECKED VJW
DATE 03-24-2023
SCALE 1"=20' (22X34)
PROJECT NO. 22116
SHEET NO. C7





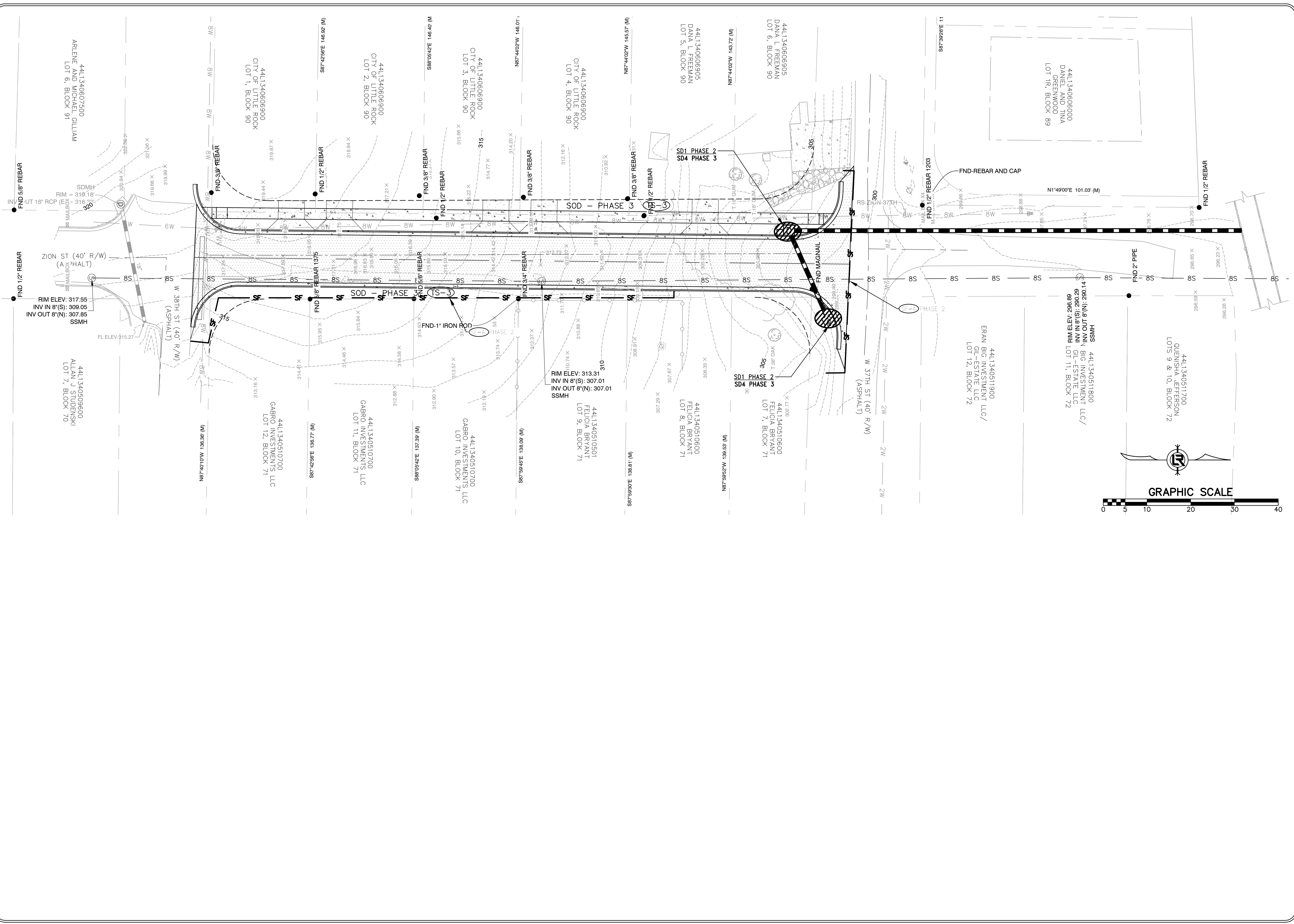
REVISIONS	DATE

CITY OF LITTLE ROCK, ARKANSAS
ZION STREET EXTENSION
PHASE 1 - EROSION CONTROL PLAN

DEPARTMENT OF PUBLIC WORKS
CIVIL ENGINEERING
 101 W. MARKHAM
 LITTLE ROCK, ARKANSAS 72201



DRAWN BY
TM
DESIGNED
VJW & TM
CHECKED
VJW
DATE
03-24-2023
SCALE
1"=20' (22X34)
PROJECT NO.
22116
SHEET NO.
C8



REVISIONS	DATE

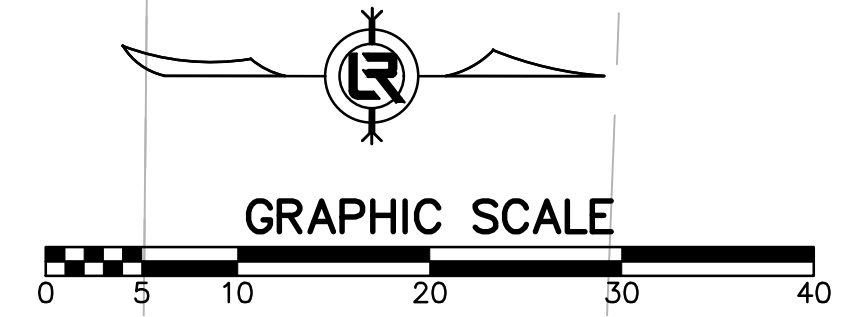
CITY OF LITTLE ROCK, ARKANSAS
ZION STREET EXTENSION
PHASE 2 & 3 - EROSION CONTROL PLAN

DEPARTMENT OF PUBLIC WORKS
CIVIL ENGINEERING
701 W. MARKHAM
LITTLE ROCK, ARKANSAS 72201

STATE OF ARKANSAS
 REGISTERED PROFESSIONAL ENGINEER
 NO. 8551
 PERSON WILLIAMS

04-13-2023

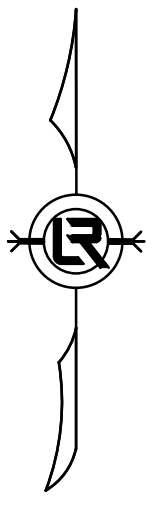
DRAWN BY TM
DESIGNED VJW & TM
CHECKED VJW
DATE 03-24-2023
SCALE 1"=20' (22X34)
PROJECT NO. 22116
SHEET NO. C9





MAINTENANCE OF TRAFFIC NOTES:

1. WITHIN CONSTRUCTION LIMITS CONTRACTOR SHALL:
 - * MAINTAIN CONTINUOUS VEHICULAR ACCESS TO ALL RESIDENCES.
 - * PROVIDE, INSTALL, AND MAINTAIN (INCLUDING RELOCATION AS NEEDED) ALL TRAFFIC CONTROL DEVICES.



REVISIONS	DATE

CITY OF LITTLE ROCK, ARKANSAS
 ZION STREET EXTENSION
 MAINTENANCE OF TRAFFIC PLAN

DEPARTMENT OF PUBLIC WORKS
 CIVIL ENGINEERING
 701 W. MARKHAM
 LITTLE ROCK, ARKANSAS 72201




DRAWN BY
 TM
 DESIGNED
 VJW & TM
 CHECKED
 VJW
 DATE
 03-24-2023
 SCALE
 1"=20' (22X34)
 PROJECT NO.
 22116
 SHEET NO.
 C10

REVISIONS	DATE

CITY OF LITTLE ROCK, ARKANSAS
ZION STREET EXTENSION
 PROPERTY OWNERSHIP MAP-1

DEPARTMENT OF PUBLIC WORKS
 CIVIL ENGINEERING
 101 W. MARKHAM
 LITTLE ROCK, ARKANSAS 72201



STATE OF ARKANSAS
 REGISTERED PROFESSIONAL ENGINEER
 NO. 8551
 W. WILLIAMS

04-13-2023

DRAWN BY
 GPW
 DESIGNED
 VJW & TM
 CHECKED
 VJW
 DATE
 03-24-2023
 SCALE
 1"=20' (22X34)
 PROJECT NO.
 22116
 SHEET NO.
C11



OWNERSHIP INFORMATION			
PARCEL NO	NAME	ADDRESS	PARCEL ID
1	CITY OF LITTLE ROCK	500 W MARKHAM ST STE 310 LITTLE ROCK, AR 72201-1430	44L1340606900
2	DANA L. FREEMAN	7822 W 25TH ST LITTLE ROCK, AR 72204	44L1340606905
4	GABRO INVESTMENTS, LLC	P.O. BOX 387 MABELVALE, AR 72103-0387	44L1340510700

