




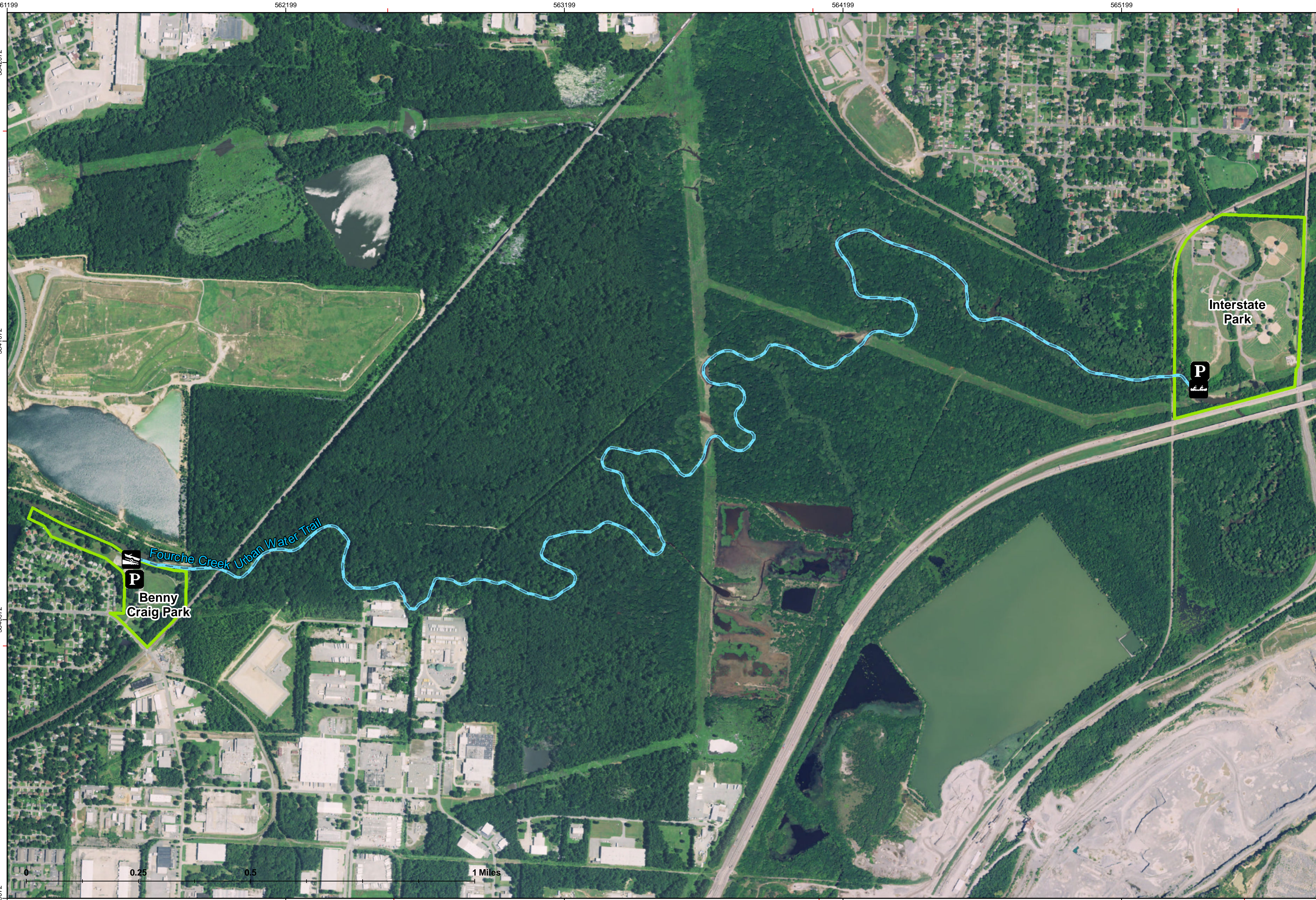


Fourche Creek Urban Water Trail

-  Water Trail
-  Parking Area
-  Boating Access - Paved/Concrete
-  Canoe/Kayak Access
-  Public Land Boundary

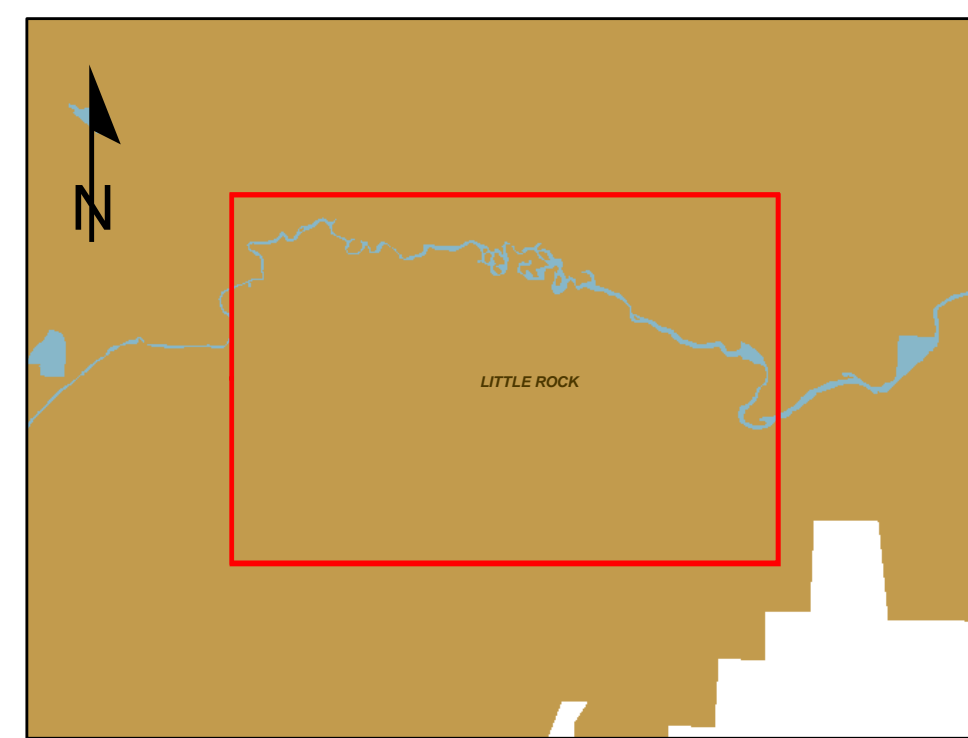


Additional Information

Water Level
 The U.S. Geological Survey water gauge at University Avenue should read a minimum of 2.5 feet for comfortable paddling to Interstate Park – 3 to 6 feet is ideal. At levels below 2.5 feet, consider paddling upstream from Interstate Park. Be prepared to portage around downed trees, and avoid the creek during floods. For current water level, search USGS Fourche Creek at University Avenue.

Don't Get A Ticket
 According to Arkansas law, children 12 and younger must wear a Coast Guard-approved life jacket, and everyone on a boat must have one ready to use. Vessels 16 feet and longer must have a throw-able life preserver aboard. Glass containers are illegal in canoes and kayaks. Paddlers must securely fashion cooler lids, use attached, closeable trash containers, and keep beverages in floating holders.

Important Numbers
 Pulaski County EMS.....911
 Pulaski County Sheriff.....501.340.6600
 LR Parks and Recreation...501.371.4770



FOURCHE CREEK URBAN WATER TRAIL

This product is reproduced from geospatial information prepared by the GIS staff of the Arkansas Game and Fish Commission. Every attempt has been made to provide accurate information about areas. However, due to a wide range of factors the content accuracy or completeness of this product is not guaranteed. It is intended for reference purposes only. Represented features may not be in accurate geographic locations. Geospatial information may be corrected, updated, modified or replaced without notification at a later date. The boundaries reflected on maps are a representation of regulatory areas and are **not intended to be regarded as exact or proof of ownership**. To respect property rights and avoid trespass, always consult AGFCs Code of Regulations in addition to official surveys and other recorded land instruments, and adhere to the boundary signs and other on-site indicators. For more information, contact the GIS Division at gis@agfc.ar.gov.



www.agfc.com/watertrails