


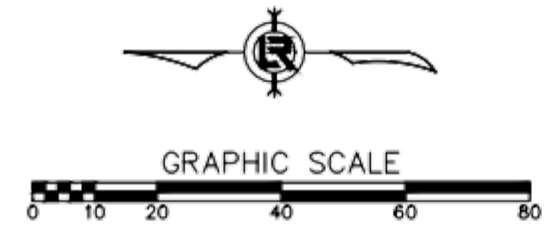
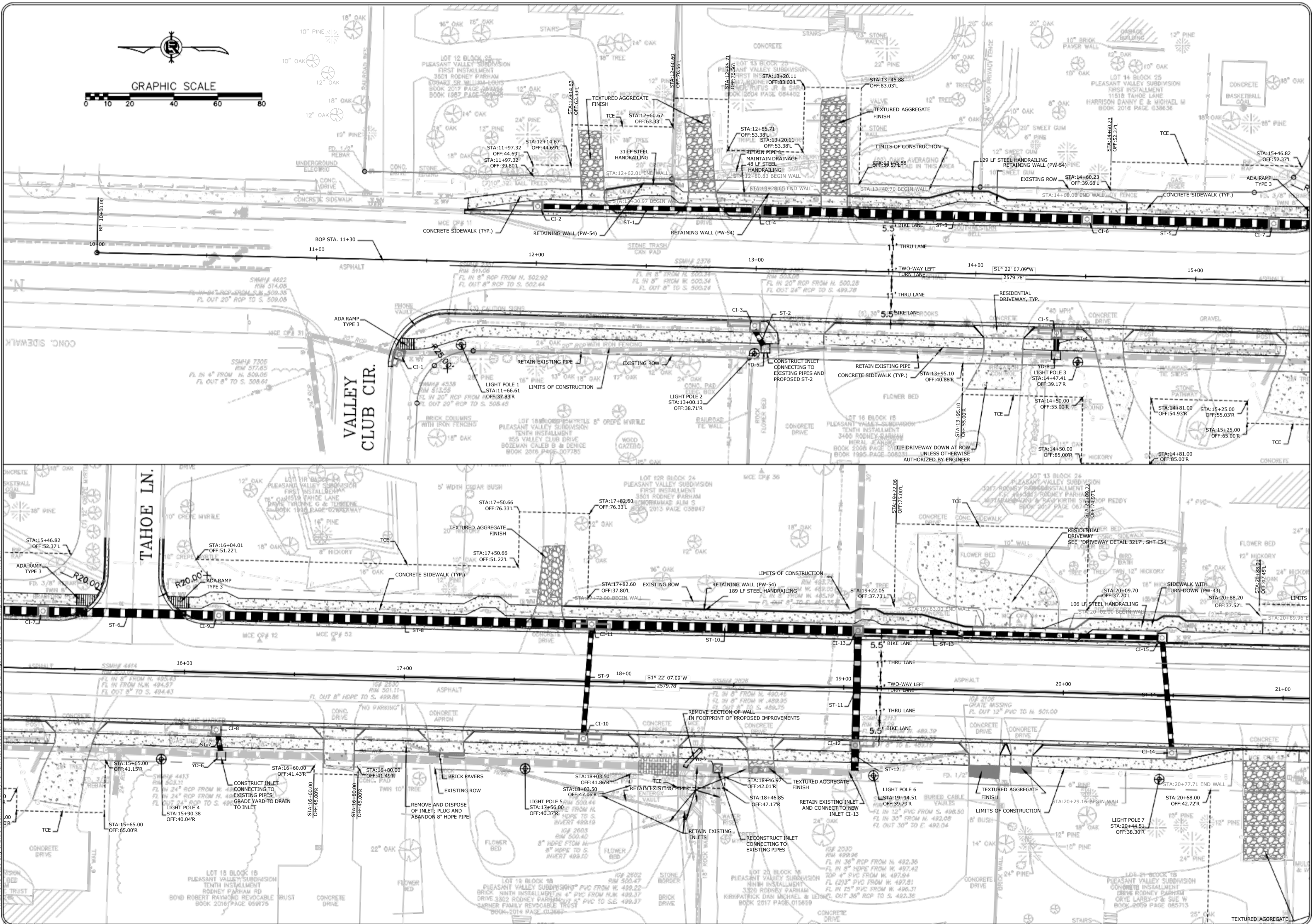
REVISIONS	DATE

CITY OF LITTLE ROCK, ARKANSAS
N. RODNEY PARHAM ROAD WIDENING
PLAN AND PROFILE

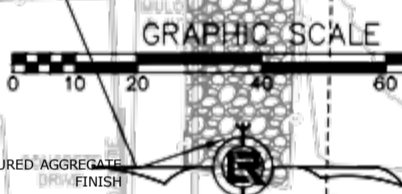
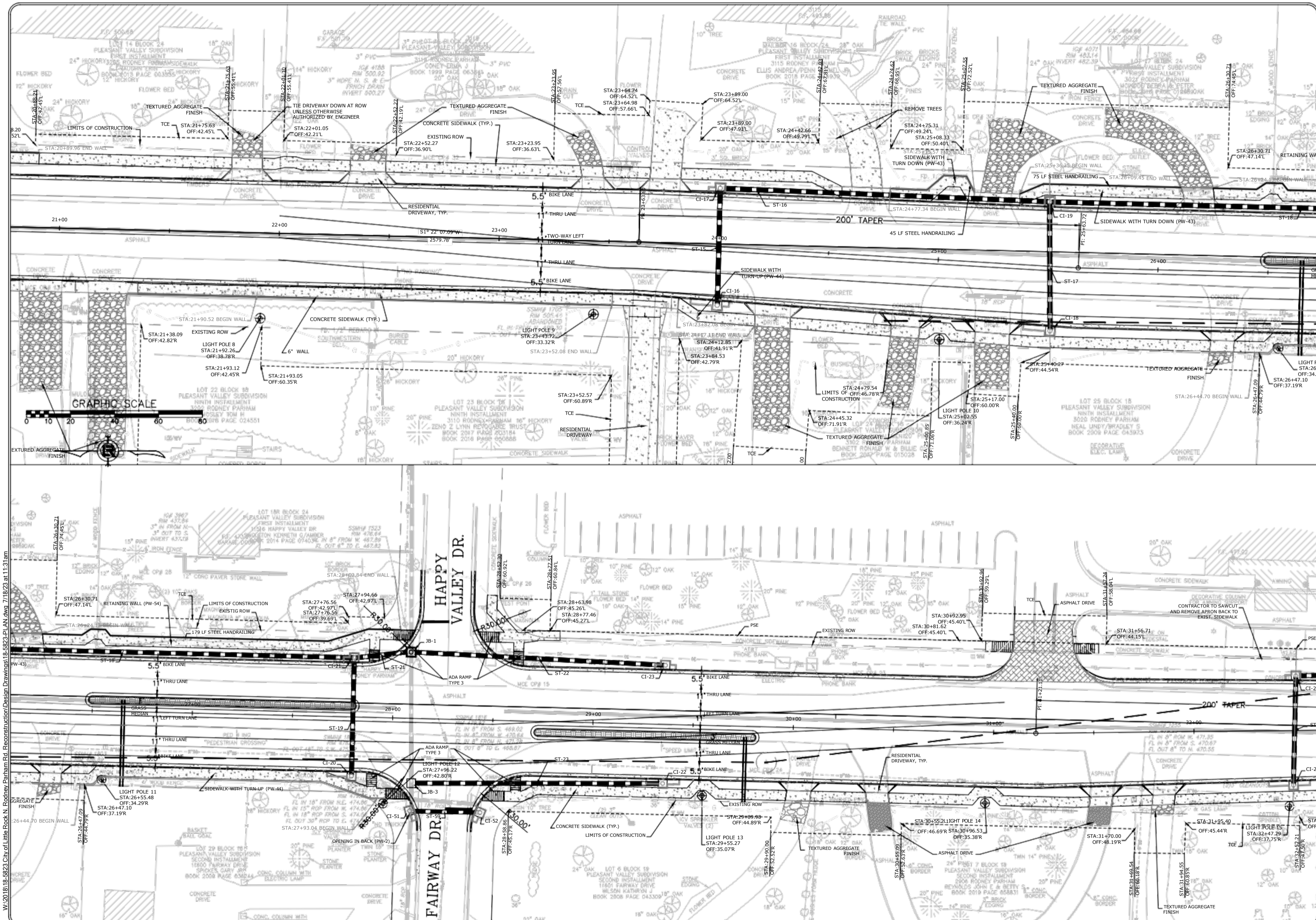

 DEPARTMENT OF PUBLIC WORKS
 CIVIL ENGINEERING
 701 W. MARKHAM
 LITTLE ROCK, ARKANSAS 72201


 STATE OF ARKANSAS
 LICENSED PROFESSIONAL ENGINEER
 No. 17435
 CLARENCE GAUTHREAU

DRAWN BY
 CGS
DESIGNED
 CGS
CHECKED
 MK
DATE
 04/30/2021
SCALE
 1"=20'
PROJECT NO.
 04-17-ST-202
SHEET NO.
 1



WA:201818-5823 City of Little Rock N. Rodney Parham Rd. Reconstruction Design Drawings 18-5823-PLAN.dwg 7/18/23 at 11:15am



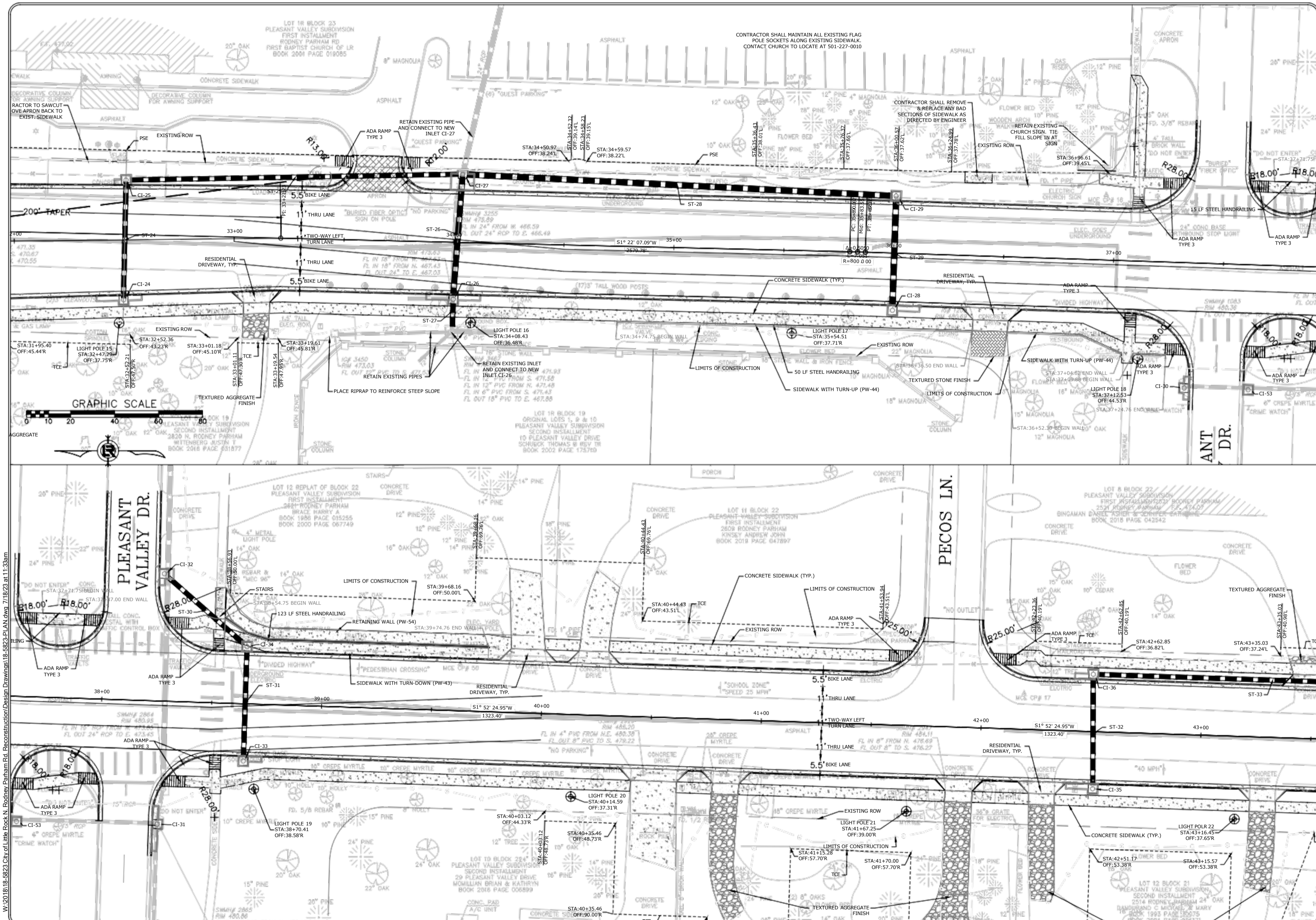
REVISIONS	DATE

CITY OF LITTLE ROCK, ARKANSAS
N. RODNEY PARHAM ROAD WIDENING
PLAN AND PROFILE


 DEPARTMENT OF PUBLIC WORKS
 CIVIL ENGINEERING
 701 W. MARKHAM
 LITTLE ROCK, ARKANSAS 72201


 STATE OF ARKANSAS
 LICENSED PROFESSIONAL ENGINEER
 No. 17435
 CLARENCE GAUTHREAU

DRAWN BY	CGS
DESIGNED	CGS
CHECKED	MK
DATE	04/30/2021
SCALE	1"=20'
PROJECT NO.	04-17-ST-202
SHEET NO.	2



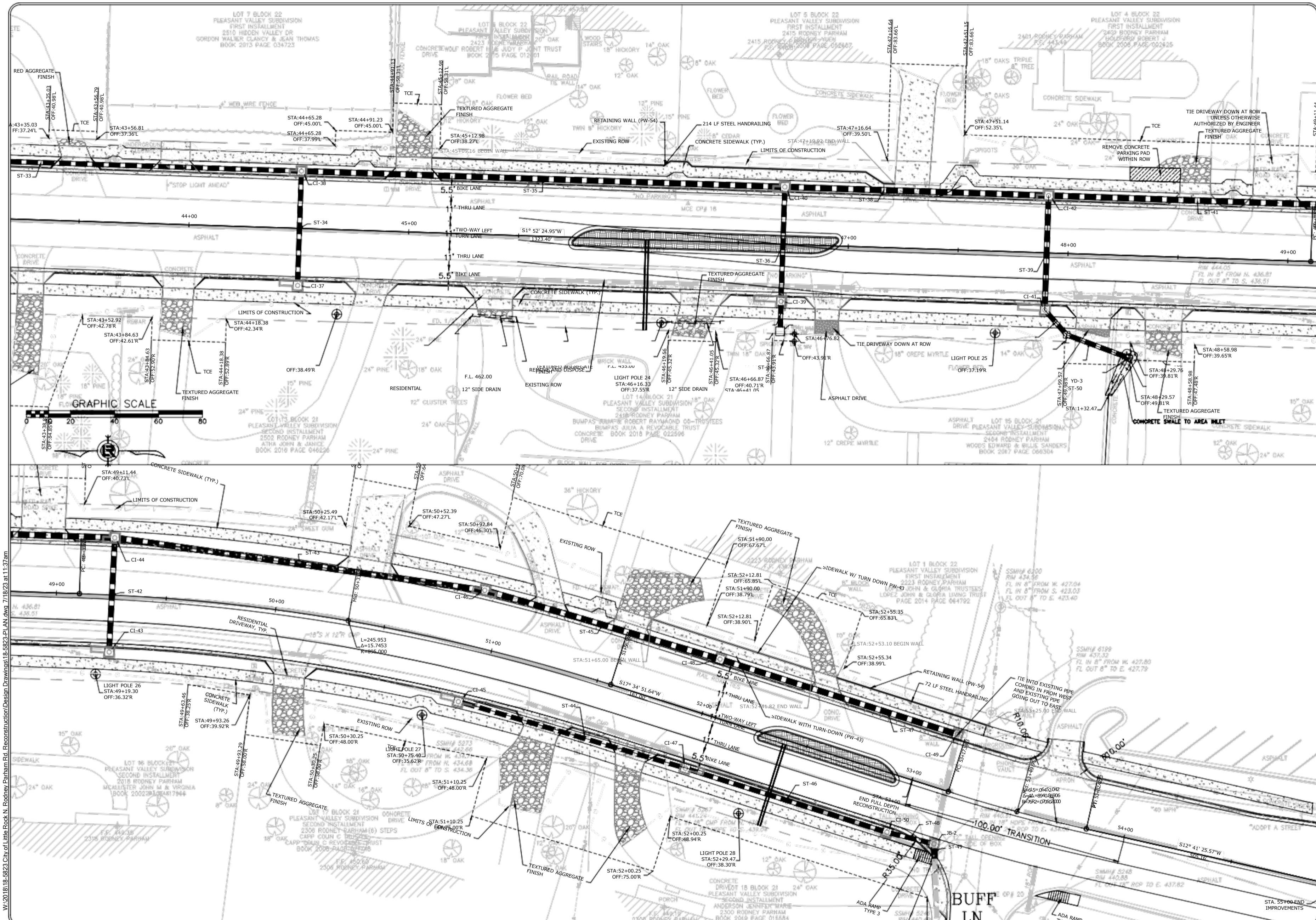
REVISIONS	DATE

CITY OF LITTLE ROCK, ARKANSAS
N. RODNEY PARHAM ROAD WIDENING
 PLAN AND PROFILE

DEPARTMENT OF PUBLIC WORKS
CIVIL ENGINEERING
 701 W. MARKHAM
 LITTLE ROCK, ARKANSAS 72201



DRAWN BY
CGS
DESIGNED
CGS
CHECKED
MK
DATE
04/30/2021
SCALE
1"=20'
PROJECT NO.
04-17-ST-202
SHEET NO.
3



REVISIONS	DATE

CITY OF LITTLE ROCK, ARKANSAS
N. RODNEY PARHAM ROAD WIDENING
PLAN AND PROFILE



DEPARTMENT OF PUBLIC WORKS
CIVIL ENGINEERING
701 W. MARKHAM
LITTLE ROCK, ARKANSAS 72201



STATE OF ARKANSAS
LICENSED PROFESSIONAL ENGINEER
No. 17435
Charles G. Gauthreaux

DRAWN BY CGS
DESIGNED CGS
CHECKED MK
DATE 04/30/2021
SCALE 1"=20'
PROJECT NO. 04-17-ST-202
SHEET NO. 4