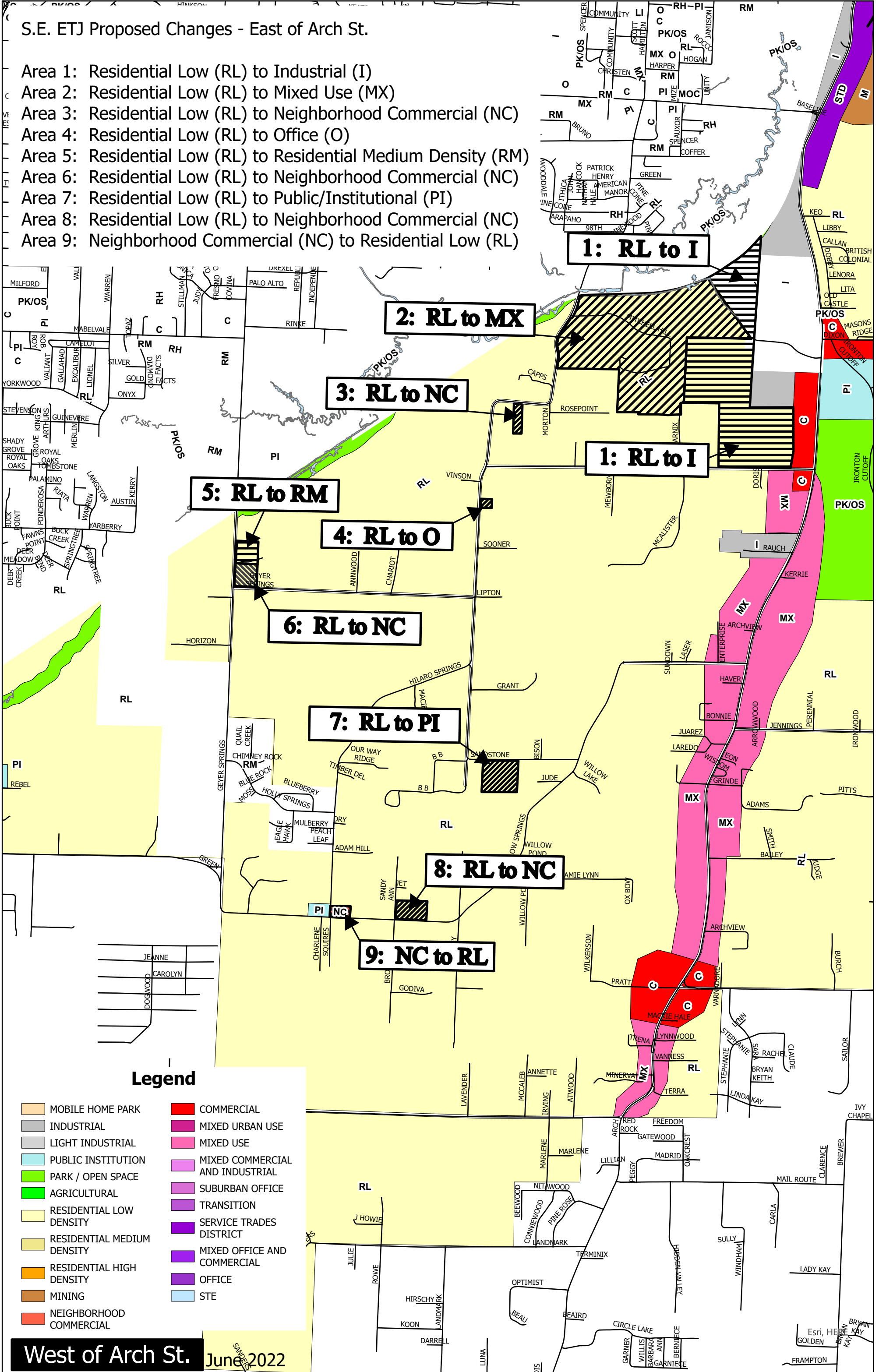


S.E. ETJ Proposed Changes - East of Arch St.

- Area 1: Residential Low (RL) to Industrial (I)
- Area 2: Residential Low (RL) to Mixed Use (MX)
- Area 3: Residential Low (RL) to Neighborhood Commercial (NC)
- Area 4: Residential Low (RL) to Office (O)
- Area 5: Residential Low (RL) to Residential Medium Density (RM)
- Area 6: Residential Low (RL) to Neighborhood Commercial (NC)
- Area 7: Residential Low (RL) to Public/Institutional (PI)
- Area 8: Residential Low (RL) to Neighborhood Commercial (NC)
- Area 9: Neighborhood Commercial (NC) to Residential Low (RL)



Legend

- | | |
|----------------------------|---------------------------------|
| MOBILE HOME PARK | COMMERCIAL |
| INDUSTRIAL | MIXED URBAN USE |
| LIGHT INDUSTRIAL | MIXED USE |
| PUBLIC INSTITUTION | MIXED COMMERCIAL AND INDUSTRIAL |
| PARK / OPEN SPACE | SUBURBAN OFFICE |
| AGRICULTURAL | TRANSITION |
| RESIDENTIAL LOW DENSITY | SERVICE TRADES DISTRICT |
| RESIDENTIAL MEDIUM DENSITY | MIXED OFFICE AND COMMERCIAL |
| RESIDENTIAL HIGH DENSITY | OFFICE |
| MINING | STE |
| NEIGHBORHOOD COMMERCIAL | |